

What does outdoor power watt mean





Overview

What is the best wattage for outdoor lighting?

As a general rule, the best wattage for outdoor lighting is 40 watts or less. This will provide enough light to securely and efficiently illuminate your outside space. Although you should consider the number of lumens. You may need to increase the wattage of your outdoor lights if your outside space is more significant.

How does wattage affect the brightness of outdoor lights?

A. Wattage affects the brightness of outdoor lights by determining the amount of energy used, with higher wattage usually resulting in a greater output of light. However, LED technology has changed modern lighting, as outdoor light wattage does not determine the brightness for these types of fixtures. Q.

What is the difference between watt hours and watt-hours?

But if you try to run a larger device that requires more power, say a 2500-watt heater, the station won't be able to keep up and might shut down. Watt-hours, on the other hand, refer to energy capacity—how much total energy the power station can store and provide over time.

What wattage should outdoor security lights be?

A. For outdoor security lights, a wattage range of 30 to 100 watts is typically what we recommend to our customers to ensure adequate brightness for effective surveillance. However, choosing the best wattage for outdoor lights is a balancing act between sufficient illumination and energy efficiency. Q.

Does wattage matter?

First and foremost, wattage is the unit of power used to measure your electricity consumption, so yes, wattage matters as it could seriously impact your monthly bills. However, when it comes to light produced by bulbs, higher wattage doesn't correlate to brighter lights.



What is a watt power station?

Unit: Watts (W) Analogy: Imagine electricity flowing through a pipe. The wider the pipe, the more electricity flows. That flow is measured in watts. This is the maximum continuous power the station can supply without overheating or shutting down. Example: A 1000W power station can continuously run a 1000W hairdryer.



What does outdoor power watt mean



What Does Output Wattage Mean in a Portable Power Station?

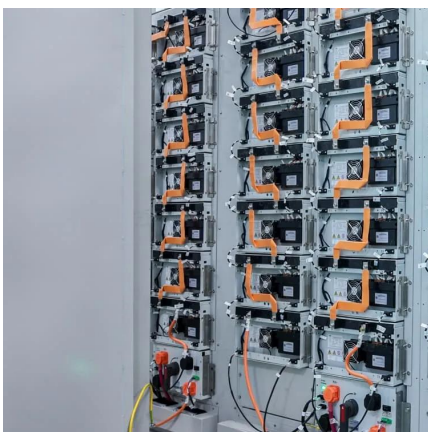
Output wattage refers to the amount of electrical power a portable power station can provide at a given time. Measured in watts (W), it determines what kind of devices the power station can run.

[WhatsApp](#)

[What Wattage Should Outdoor Lighting Be?](#)

It is a measure of the amount of electrical power that is being used by an electrical device or appliance. It indicates the rate at which energy is being consumed, and it is usually ...

[WhatsApp](#)



What Wattage Should Outdoor Lights Be? Buying The Right Lights

As a general rule, the best wattage for outdoor lighting is 40 watts or less. This will provide enough light to securely and efficiently illuminate your outside space.

[WhatsApp](#)

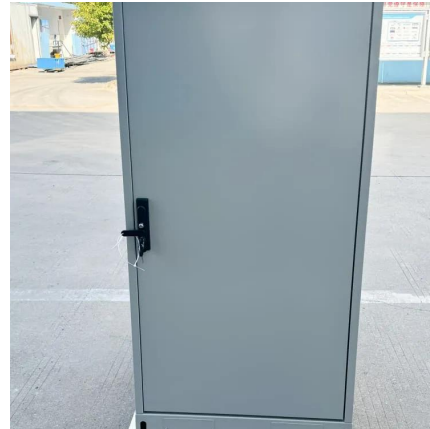
How to Find Wattage Needed for Your Generator Application , Polaris Power

Running Watts (or rated watts): The maximum number of watts that your generator can provide when your items are running. How to determine



wattage: $\text{Watt} = \text{Amp} \times \text{Volt}$ (for example, 3 ...

[WhatsApp](#)



[Power \(W\) , Technical Guide , LampTwist](#)

Watt (W) is the unit of power, representing the rate of energy transfer or conversion. In lighting, wattage indicates how much electrical energy a light source or fixture consumes to produce light.

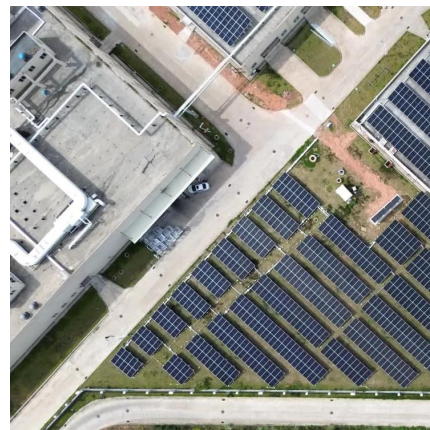
[WhatsApp](#)



Portable Power Stations for Beginners: Understanding Watts, Watt ...

If you've ever looked at a portable power station and thought, "What do all these numbers mean?" -- you're not alone. This beginner-friendly guide breaks it all down into ...

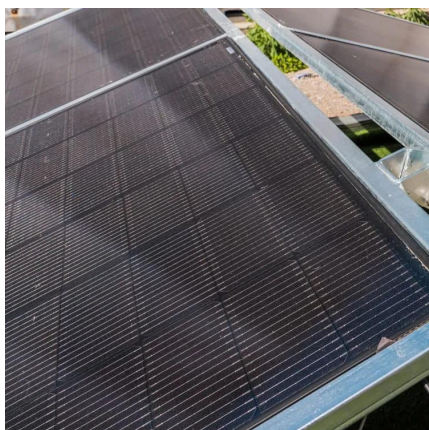
[WhatsApp](#)



Outdoor power supply FAQ: What does the watt of outdoor power ...

The power of an outdoor power supply refers to the maximum power it can output, in watts (W). The power of an outdoor power supply determines the types of electrical ...

[WhatsApp](#)





Finding the Perfect Power: How Many Watts Do I Need for My ...

What does wattage mean in relation to speakers? Wattage, in the context of speakers, refers to the amount of electrical power the speaker can handle and convert into ...

[WhatsApp](#)



THIS IS THE BEST WATTAGE FOR OUTDOOR LIGHTS OF ...

Energy consumption, measured in watts, indicates the power required by a light bulb, while illumination, measured in lumens, indicates the light output. Thus, higher wattage ...

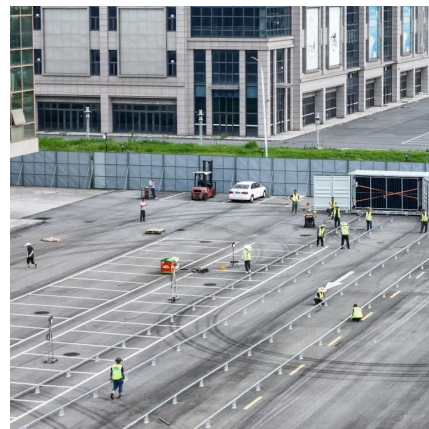
[WhatsApp](#)



Outdoor power supply FAQ: What does the watt of outdoor power supply mean?

The power of an outdoor power supply refers to the maximum power it can output, in watts (W). The power of an outdoor power supply determines the types of electrical ...

[WhatsApp](#)



Complete Guide To Speaker Power Handling & Wattage Ratings

What is speaker power handling (wattage rating)? The speaker power handling specification (aka wattage rating) is the measured or theoretical limit of electric power the ...

[WhatsApp](#)



Contact Us

For catalog requests, pricing, or partnerships, please visit:
<https://www.straighta.co.za>