

What does outdoor power fast charging mean





Overview

What is a fast charging standard?

This fast charging standard provides high charging speeds with 100W+ charging power. This is due to the new Dual Charge technology. Smartphones and devices can be charged up to 10 degrees Celsius cooler and up to four times faster. They charge up to 70% more efficiently than with previous solutions.

Why is fast charging so important?

Being able to quickly charge your phone or tablet can mean the difference between hours of care-free use and scrambling to find the nearest coffee shop for a power outlet. Fast charging is gradually becoming a near-ubiquitous feature that allows you to power up your device in just a fraction of the time it took in the past.

How much power does a fast charging device need?

To qualify as “fast charging,” the charger typically needs to deliver at least 50 watts of power. That translates to voltage and current values like 400V and 125A ($400 \times 125 = 50,000 \text{ W}$). On smaller devices like smartphones, fast charging often involves delivering power at 5V, 9V, or 12V, with amperage around 2A (2000mA).

Is a fast charger faster than an onboard charger?

But it is also a lot faster. That is why they are usually referred to as ‘DC fast chargers’ or just ‘fast chargers’. A typical fast charger delivers 300 kW which charges a vehicle about 25 to 80 times faster than an onboard charger. The next generation of fast chargers were introduced in early 2023 and deliver 400 kW.

Do I need a fast charge if my Charger doesn't work?

If you need a fast charge, your charger as well as the phone should be



equipped with this function. If your charger doesn't support fast charging, you won't be able to fast charge your phone even if it's connected with a fast-charging cable.

Does fast charging drain a battery faster?

No, fast charging does not drain the battery faster. It simply delivers more current to charge the battery quickly. What it can impact is the battery's lifespan, as higher current can stress the battery over time. On the other hand, slow charging is gentler but takes longer to reach a full charge. Can you use a fast charger overnight?



What does outdoor power fast charging mean



Fast Charging Tech: Everything You Need to Know [Infographic]

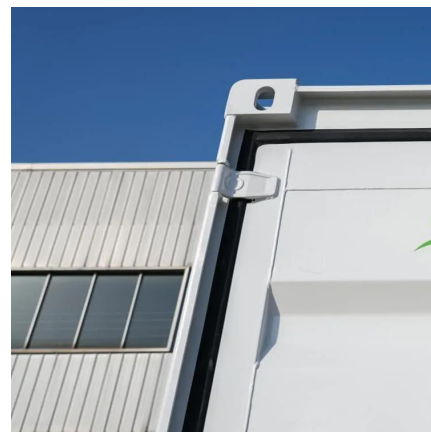
If you need a fast charge, your charger as well as the phone should be equipped with this function. If your charger doesn't support fast charging, you won't be able to fast charge your ...

[WhatsApp](#)

Guide to EV Charging Speed: Does More Power Really Mean Faster Charging?

Wondering why your EV charges slower than expected? Explore how factors like charging station power, vehicle capacity, and environmental conditions impact charging speed.

[WhatsApp](#)



The Pros and Cons of Fast Charging: Everything You Need to Know

Fast charging is a technology that charges your devices--like smartphones and tablets--much quicker than standard charging. It does this by increasing the flow of electricity ...

[WhatsApp](#)

Fast Charging 101: A Beginner's Guide to Understanding EV

Fast charging tops up electric vehicles quickly, adding up to 80 miles in 20 minutes at public stations, compared to slower home charging.



Three plug types exist: Tesla's NACS, ...

[WhatsApp](#)



Fast Charging Myths Debunked: The Real Battery Killers Revealed

Fast charging doesn't cause phone batteries to degrade faster. The real harm is bad habits, such as overnight charging, deep drains, and keeping the battery constantly above ...

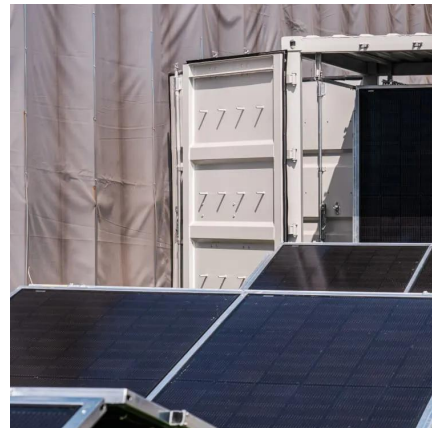
[WhatsApp](#)



[Fast charging vs flash charging: What's the difference?](#)

Fast charging and flash charging both promise speed--but if you've ever wondered why one phone charges to 50% in 10 minutes while another takes twice the time, you're not ...

[WhatsApp](#)



Everything you always wanted to know about fast charging

A typical fast charger delivers 300 kW which charges a vehicle about 25 to 80 times faster than an onboard charger. The next generation of fast chargers were introduced in early 2023 and ...

[WhatsApp](#)





What Is Fast Charging? Pros, Cons, and Impact on Battery Life

To qualify as "fast charging," the charger typically needs to deliver at least 50 watts of power. That translates to voltage and current values like 400V and 125A ($400 \times 125 = \dots$)

[WhatsApp](#)



Does More Watts Mean Faster Charging? Debunking the Myth

The Conclusion In conclusion, the belief that more watts mean faster charging is a myth that needs to be debunked. While it is true that higher wattage chargers are capable of ...

[WhatsApp](#)

How to Choose the Best Charging Method for an Outdoor Power ...

For outdoor or mobile use, choose a PD-enabled power bank or solar charging system with stable PD output. With proper power input, the CH4000 delivers safe, fast, and reliable charging for a ...

[WhatsApp](#)



Contact Us

For catalog requests, pricing, or partnerships, please visit:
<https://www.straightta.co.za>