

What does grid-connected inverter mean





Overview

A grid-tie inverter converts direct current (DC) into an alternating current (AC) suitable for injecting into an electrical power grid, at the same voltage and frequency of that power grid. Grid-tie inverters are used between local electrical power generators: solar panel, wind turbine, hydro-electric, and the grid.

Electricity companies, in some countries, pay for electrical power that is injected into the electricity utility grid. Payment is arranged in several ways. With the electricity company pays for the net.

Grid-tie inverters include conventional low-frequency types with transformer coupling, newer high-frequency types, also with transformer coupling, and transformerless types. Instead of converting direct current directly into AC suitable for the grid, high-frequency.

- - This is the official California Energy Commission (CEC) list of inverters that are eligible for California's rebate program. Other states use this list as well.
- - website that allows.

Grid-tie inverters convert DC electrical power into AC power suitable for injecting into the electric utility company grid. The grid tie inverter (GTI).

Manufacturers for their inverters usually include the following data:

- Rated output power: This value is provided in watts or.



What does grid-connected inverter mean



Confusion on meaning of Off Grid vs Grid-tie vs Zero Export

Off grid means in our world means there is no parallel connection to the grid. The inverter can pull from the grid, like any regular appliance but cannot sell to the grid. The ...

[WhatsApp](#)

[Solar Integration: Inverters and Grid Services Basics](#)

It's a device that converts direct current (DC) electricity, which is what a solar panel generates, to alternating current (AC) electricity, which the electrical grid uses. In DC, electricity is ...

[WhatsApp](#)



Off-Grid Inverter: What Is, Pros & Cons, Off-Grid Vs On-Grid

An off-grid inverter is a critical component that converts DC electricity to AC power. Read this Jackery's guide to learn about off-grid inverters, its working principle, pros and cons, ...

[WhatsApp](#)



[What is a solar grid-connected inverter? .](#) [NenPower](#)

A solar grid-connected inverter is a device that converts the direct current (DC) electricity generated by solar panels into alternating



current (AC) electricity for use in a ...

[WhatsApp](#)



What Is a Grid Tie Inverter? See Why Experts Recommend It

What Is a Grid-Tie Inverter? A grid-tie inverter, also known as a grid-connected inverter, is a device that allows your solar energy system to work in tandem with the electrical ...

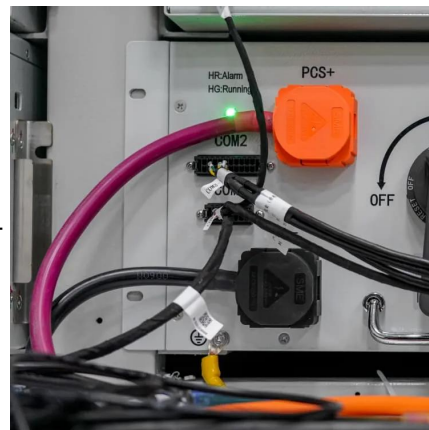
[WhatsApp](#)



Understanding AC Coupling Inverters and Their Role in Solar ...

How AC-coupling adds battery backup to grid-tied solar systems AC coupling is a method used to connect solar panel s to battery storage in grid-tied solar systems. It involves using a battery ...

[WhatsApp](#)



Grid-tied, Grid-connected, Off-grid. What's the difference?

Somewhere in the middle of these two extremes is the "grid-connected" solar system. Like the off-grid solar system, a grid-connected system will include a battery bank and an inverter ...

[WhatsApp](#)

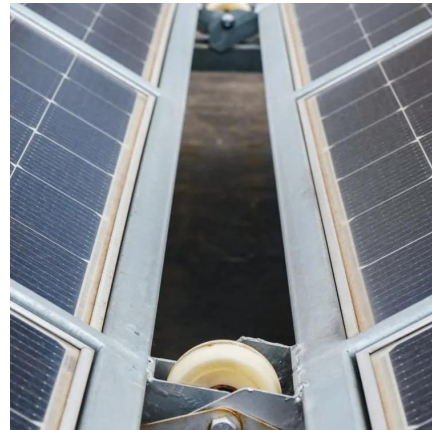




Difference Between Grid-Tied PV Inverter And Regular Inverter

Grid-tied PV inverters connect your home and supplement the electrical grid in case of surplus power generation. The inverter delivers power to your home appliances ...

[WhatsApp](#)



Contact Us

For catalog requests, pricing, or partnerships, please visit:
<https://www.straighta.co.za>