

# **What does battery storage time mean**





## Overview

---

How long does a battery energy storage system last?

Let's break it down: Battery Energy Storage Systems (BESS): Lithium-ion BESS typically have a duration of 1–4 hours. This means they can provide energy services at their maximum power capacity for that timeframe. Pumped Hydro Storage: In contrast, technologies like pumped hydro can store energy for up to 10 hours.

How many hours a day does a battery last?

Most battery capacity installed in the late 2010s was made up of short-duration batteries used for grid services, but that trend has changed over time. Batteries with a duration between four hours and eight hours are typically cycled once per day and are used to shift electricity from times of relatively low demand to times of high demand.

How much power does a battery store?

Or follow us on Google News! At the end of 2021, the United States had 4,605 megawatts (MW) of operational utility-scale battery storage power capacity, according to our latest Preliminary Monthly Electric Generator Inventory. Power capacity refers to the greatest amount of energy a battery can discharge in a given moment.

How long does a battery last before recharging?

When fully charged, battery units built through 2020 could produce their rated nameplate power capacity for about 3.0 hours on average before recharging. Our Annual Electric Generator Report also contains information on how energy storage is used by utilities.

What temperature should a battery be stored?

Hot Storage: 77°F (25°C) to 122°F (50°C) – High temperatures accelerate self-discharge and can stress the battery. Batteries should never come into



contact with metallic items or other batteries to avoid the risk of short-circuiting. Ideally, store batteries in their original packaging or wrap them individually in plastic.

How long does a solar battery last?

Think of it like the fuel tank for your solar battery – it lets you know how long the battery can power your home before it needs to be recharged. Let's break it down: if you have a battery rated for 10 amp-hours, it means the battery can deliver 1 amp of current for 10 hours, or 2 amps of current for 5 hours, and so on.



## What does battery storage time mean

---



### What Is Battery Storage Capacity?

Battery storage capacity refers to the maximum amount of electricity a unit can store when fully charged. Not all batteries can be safely operated until fully discharged. For example, you ...

[WhatsApp](#)

### Understanding 1-Hour to 8-Hour Battery Storage Systems: ...

What Does "1-Hour" or "8-Hour" Battery Storage Mean? The duration of a battery storage system refers to how long it can discharge its total energy capacity at its rated power. For example: 1 ...

[WhatsApp](#)



### [A Guide to Battery Storage, Discharge, and Expiration](#)

Shelf life refers to the duration a disposable battery retains its charge unused, or for rechargeable batteries, how long before it requires a recharge. It is closely related to the self ...

[WhatsApp](#)

### The Duration of Battery Energy Storage: All depends on how you ...

Utility-scale battery storage is growing at tremendous pace in the U.S., and it provides a variety of services from grid to load shifting. How





long the battery energy storage ...

[WhatsApp](#)



### What Does SOC Mean in a Solar System? Understanding State ...

Learn about SOC (State of Charge) in solar systems and how it affects battery performance, efficiency, and lifespan. Discover the role of SOC monitoring, ACE's PE20 H2 ...

[WhatsApp](#)

### Duration Of Utility-Scale Batteries Depends On How They're Used

Batteries with a duration between four hours and eight hours are typically cycled once per day and are used to shift electricity from times of relatively low demand to times of ...

[WhatsApp](#)



### What Does Battery Capacity Mean?

What Does Battery Capacity Mean? Introduction  
Battery capacity is a critical aspect of battery performance, yet it is often misunderstood. In this article, we will delve into the meaning of ...

[WhatsApp](#)



### [What Does Battery Capacity C100 Mean](#)

4 days ago· Battery capacity C100 refers to the discharge rate over 100 hours. It measures how much energy a battery delivers when drained slowly. This rating is crucial for long-term ...

[WhatsApp](#)



### **Battery storage, shelf life, self-discharge, and expiration**

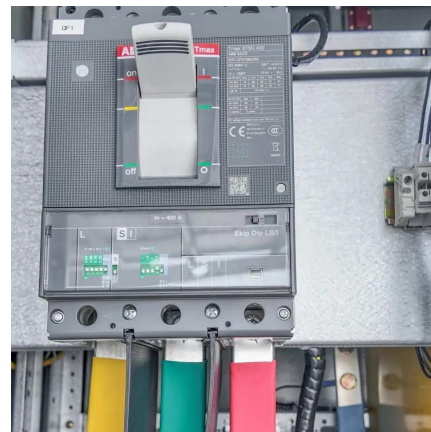
Shelf life is the length of time your disposable battery will retain its charge unused, or in the case of rechargeable batteries, how long before it will require a charge or is considered spent.

[WhatsApp](#)

### [Amp-Hours Explained: Your Battery Capacity Guide](#)

Amp-hours, or Ah, is a measure of how long a solar battery can power your home's appliances before it's completely drained. If you're considering battery storage for your solar ...

[WhatsApp](#)



### [10.2 Key Metrics and Definitions for Energy Storage](#)

Sometimes you will see capacity of storage specified in units of power (watt and its multiples) and time (hours). For example: 60 MW battery system with 4 hours of storage. What does it mean? ...

[WhatsApp](#)



### [Understanding battery Ah: A guide to battery capacity](#)

Understanding Battery Capacity When it comes to batteries, you may have come across the term "Ah" listed in the specifications. But what does Ah actually mean in the context ...

[WhatsApp](#)



## Contact Us

---

For catalog requests, pricing, or partnerships, please visit:  
<https://www.straighta.co.za>