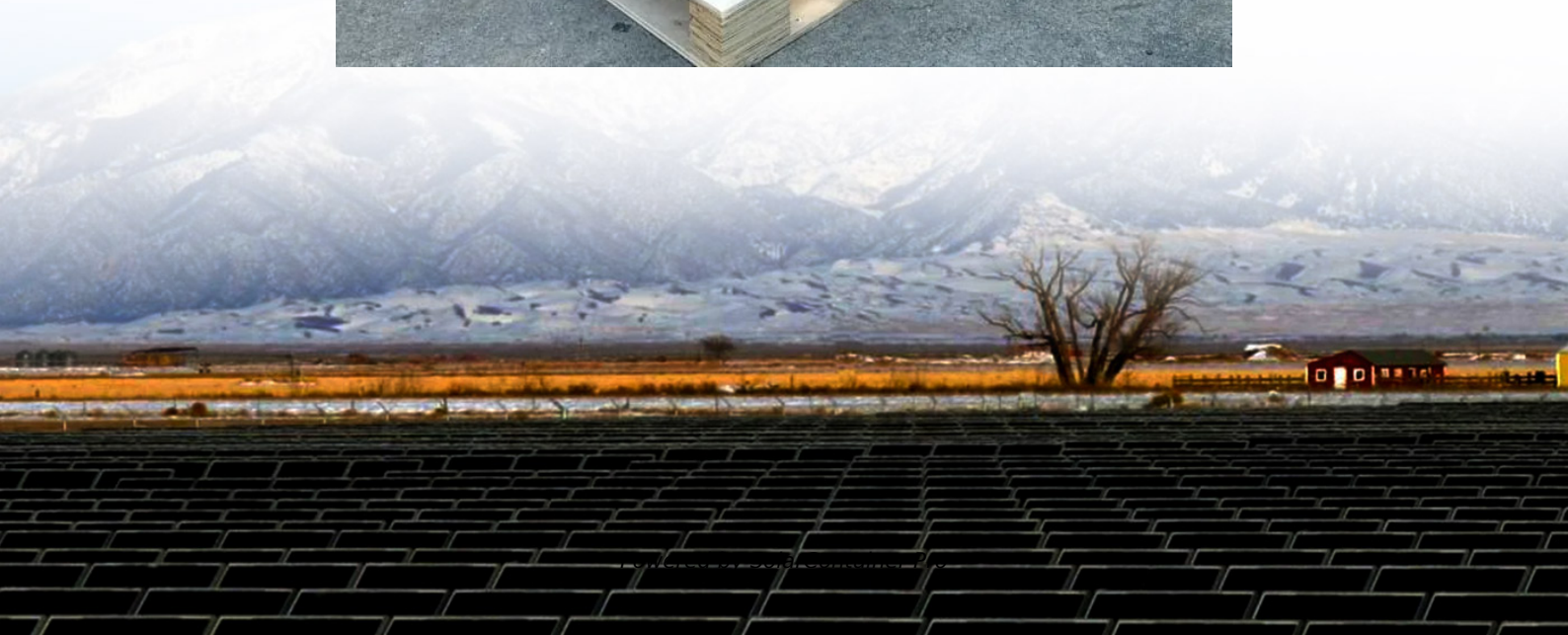


# **What does a dual voltage inverter mean**





## Overview

---

Using a dual inverter air conditioner gives you reduced power consumption. However it has other benefits which makes the air conditioning experience better in other ways. Here are the advantages of air conditioner and why using a dual inverter air conditioner is a better choice: .

An air conditioner that does not use inverter technology i.e. a non-inverter air conditioner has limited functioning when it comes to power.

Dual Inverter Air Conditioner is an advanced version of simple inverter air conditioner. It has the same capability to reduce the power consumption according to the operation required but better. Dual Inverter Air Conditioner uses twin rotary compressor contrary.

Dual Inverter Air Conditioner uses twin rotary compressor that is able to perform cooling better and much more efficient compared to non-inverter and simple inverter air.

What is a dual Inverter air conditioner?

Dual inverter air conditioners, also called twin inverters, use two rotors in the compressor to regulate the amount of energy (wattage) it takes to power the compressor. The double rotor technology allows the compressor to run at a wider range of speeds, working faster or slower than a single inverter air conditioner or a standard air conditioner.

Does a dual Inverter air conditioner consume a lot of power?

Hence in general the inverter air conditioner consumes lesser power compared to non-inverter air conditioner. However dual inverter type air conditioner has even low power consumption than single rotary compressor inverter air conditioner with other incentives. Why Use A Dual Inverter Air Conditioner?

.

What is dual inverter technology?



Dual inverter technology is a sophisticated advancement in air conditioning units designed to provide enhanced efficiency and quieter operation. This technology differs markedly from traditional air conditioners, which often employ single inverter systems.

Are dual Inverter air conditioners durable?

Dual inverter air conditioners are durable because they can reach efficient cooling by doing much less work. Since two compressors move at once, they do it more easily than a solitary inverter would have. Thus, your AC undergoes less wear and tear than a regular air conditioner.

What is dual output in a solar inverter?

What's Dual Output in a Solar Inverter?

Dual output in solar inverters lets the device split and direct power to important and less important devices differently. It makes sure critical stuff, like medical gear or laptops, stays powered during blackouts. Less vital things, like extra lights, only get energy when there's plenty to spare.

What is the difference between a full and dual inverter?

It delivers a pure sine wave with a power factor of 1.0. Plus, it uses MPPT tech to make the most of solar energy. For efficiency, full inverters are steady and dependable in all conditions. Dual inverters, however, are more adaptable. They shift power between critical and non-critical devices. This makes energy management a lot smoother.



## What does a dual voltage inverter mean

---



### Differences Between Single and Dual Maximum Power Point Trackers

The MPPT circuit constantly monitors the array voltage and current as it attempts to drive the operation point to the maximum power point on the power, resulting in the highest ...

[WhatsApp](#)

### [Understanding Split Phase Inverters: A Complete Guide](#)

FAQ What is a split phase solar inverter and how does it work? The answer to the question what is a split phase inverter is that it changes DC into AC with two 120-volt ...

[WhatsApp](#)



### What Is A Dual Inverter Air Conditioner , How Does It Really Work

Dual inverter air conditioners use two inverters that work in a complementary pattern, as opposed to traditional air conditioners, which use only one inverter. The twin ...

[WhatsApp](#)

### What Is a Dual Inverter Air Conditioner: Technology, Benefits, and

Unlike traditional ACs with fixed-speed compressors or single inverter models, dual inverter systems can modulate cooling output





more precisely while maintaining optimal energy ...

[WhatsApp](#)



### **Full Inverter vs Dual Inverter:What are the difference?-Shenzhen**

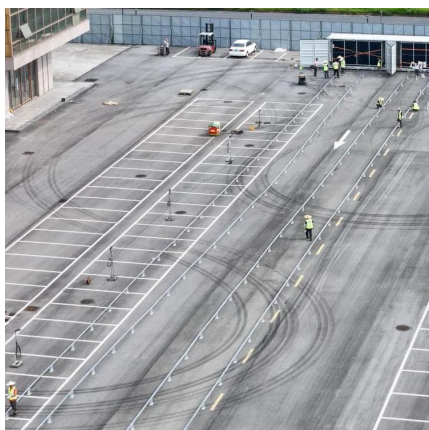
Dual output in solar inverters lets the device split and direct power to important and less important devices differently. It makes sure critical stuff, like medical gear or laptops, stays powered ...

[WhatsApp](#)

### **[Step 3: Is my device single voltage or dual voltage?](#)**

Is my device dual voltage? How can I tell? A dual voltage device can accept both 110-120V and 220-240V. Luckily, many travel gadgets are dual voltage, so you'll only need a ...

[WhatsApp](#)



### **[Introducing Dual Inverter HVAC Systems . Learn More](#)**

Dual inverters comprise an intelligent controller, two connected compressors, and a condenser coil. The intelligent controller regulates temperatures in different home zones. ...

[WhatsApp](#)



### [Dual Inverter Air Conditioner Meaning and Benefits](#)

A dual inverter air conditioner is an inverter air conditioner that has two rotors in the compressor instead of one. The dual rotors work in tandem to provide a greater range of ...

[WhatsApp](#)



### **What Is a Dual Inverter Air Conditioner: Finding Out the Facts**

A dual inverter air conditioner is a game-changer. It offers precise temperature control, uses less energy, and works better than regular ACs. Learning about its benefits can help you cool your ...

[WhatsApp](#)

### [What is a split-phase dual output inverter?](#)

At this time, if you use a solar power generation system, you need an inverter that can output two AC voltages. We call this type of inverter that can output two voltages a split-phase inverter ...

[WhatsApp](#)



### **What Does Dual Inverter Mean on an Air Conditioner? Unveil ...**

A dual inverter air conditioner features two compressors working in tandem to regulate temperature with greater precision and energy efficiency. This technology reduces energy ...

[WhatsApp](#)



### [Hybrid Car Inverter - Types, Function, & Common](#)

...

In CSI, the current supplied to the input is a stiff direct current instead of a direct current voltage. Dual inverters As the name implies, this is a type of hybrid ...

[WhatsApp](#)



## Contact Us

For catalog requests, pricing, or partnerships, please visit:  
<https://www.straighta.co.za>