

What does 20 watts of solar energy mean





Overview

How much power does a 20 watt solar panel generate?

So for, say, you receive 5 to 7 hours of sunlight daily for your 20-watt solar panel, then the total power (KWh) generation for this solar panel would be between 100 to 140 KWh daily. Thus, the power a solar panel generates will vary depending on the daily sunlight hours and how much your panel receives.

What does wattage mean on a solar panel?

You'll often see it referred to as "Rated Power", "Maximum Power", or "Pmax", and it's measured in watts or kilowatts peak (kWp). For example, the nameplate from my solar panel specifies a Wattage output of 100W, meaning that the solar panel is capable of producing 100 Watts of power under ideal conditions.

How many watts can a solar panel produce?

For example: A 100-watt panel can produce 100 watts per hour in direct sunlight. A 400-watt panel can generate 400 watts per hour under the same conditions. This doesn't mean they'll produce that amount all day, output varies with weather, shade, and panel orientation.

What is a 20W solar panel?

A 20W solar panel is generally a small-sized panel that is suitable for several applications in the following; This is where tiny batteries must be trickled charged, such as; security cameras, and more. QUICK CHOICE - OUR TOP THREE Goal Zero Nomad 20, Foldable Monocrystalline 20. Topsolar 20 Watt 12 Volt Solar Trickle Charger 20W.

How much does a 20 watt solar panel cost?

What is the Average Cost of a 20W Solar Panel?



On average, a monocrystalline solar panel costs between fifty and one hundred dollars, and a small portable 20-watt solar panel will cost anywhere between thirty to one hundred dollars to charge phones and other mobile devices.

How much power does a solar panel generate a day?

There is a very simple formula that allows one to calculate the total power output for their solar panel i.e. (Daylight Hours x Efficiency of Solar Panel). So for, say, you receive 5 to 7 hours of sunlight daily for your 20-watt solar panel, then the total power (KWh) generation for this solar panel would be between 100 to 140 KWh daily.



What does 20 watts of solar energy mean



Solar Basics: Voltage, Amperage & Wattage , The Solar Addict

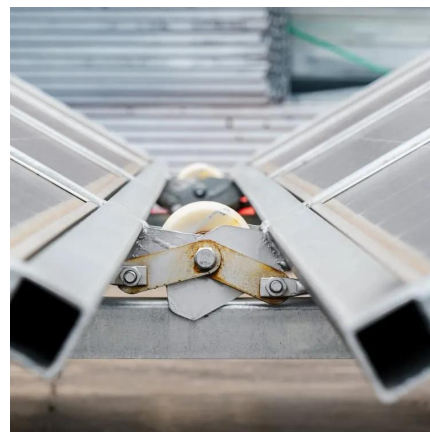
For example, a solar panel with a voltage of 20V and an amperage of 5A has a wattage of 100W. This means the panel can produce 100 watts of power under optimal ...

[WhatsApp](#)

[20 Watt Solar Panels \(Power - Charge - Kits - Control\)](#)

Under optimum conditions, a 20W solar panel can create 1.34 amps per hour. For example, under perfect conditions, the panel will produce 20 Watts for 7 hours per day, 7 days ...

[WhatsApp](#)



Watts, Kilowatts, and Kilowatt-Hours--What Do They Mean in Solar?

So a system with 25 lower-wattage panels can be just as good--or better--than a system with 20 high-wattage panels. It all depends on roof layout, shading, and what fits best ...

[WhatsApp](#)

[What does 21W solar charging mean?.](#) [NenPower](#)

1. 21W solar charging refers to the total output power of solar panels, delivering 21 watts of energy under optimal sunlight conditions,



essential for efficient energy harnessing, ...

[WhatsApp](#)



20 Watt Solar Panel: Efficient Energy Solutions , Anmak solar

The power output of 20-watt solar panels is 20 watts. This means they can produce 20 watts of electricity under ideal sunlight conditions. Their efficiency ranges from ...

[WhatsApp](#)



Solar Basics: Voltage, Amperage & Wattage , The Solar Addict

Understanding Voltage, Amperage, and Wattage in Solar Panels Solar power has become an increasingly popular and accessible energy solution for both residential and ...

[WhatsApp](#)



Solar Panel Wattage Explained: How Many Watts Do You Need?

Choosing the right solar panel wattage can make or break your solar investment. But what does "wattage" actually mean in practical terms? How many watts do you really need to ...

[WhatsApp](#)





What Does The Watt Rating On A Solar Panel Mean? Brief Guide

Based on the number of watts they produce, solar panels are rated. Your solar installation will generate more power with a higher wattage rating. Depending on the size of ...

[WhatsApp](#)



Watts, Kilowatts, and Kilowatt-Hours--What Do They Mean in ...

So a system with 25 lower-wattage panels can be just as good--or better--than a system with 20 high-wattage panels. It all depends on roof layout, shading, and what fits best ...

[WhatsApp](#)

Solar Panel Ratings Explained - Wattage, Current, Voltage, and

Now, let's explore the meaning of each solar panel rating. The Wattage rating of a solar panel is the most fundamental rating, representing the maximum power output of the ...

[WhatsApp](#)



Contact Us

For catalog requests, pricing, or partnerships, please visit:
<https://www.straighta.co.za>