

What are the specifications of the 345W dual-wave photovoltaic panels





What are the specifications of the 345W dual-wave photovoltaic panel



High Safety 345W Monocrystalline PV Module 72 Cells Harsh ...

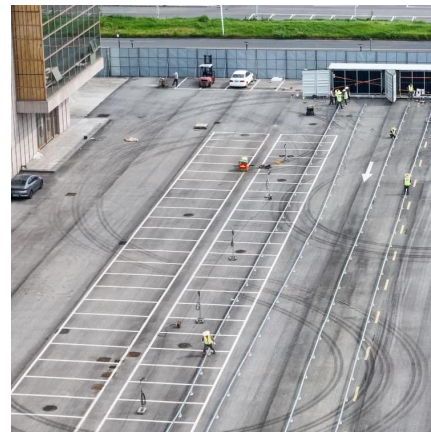
High quality High Safety 345W Monocrystalline PV Module 72 Cells Harsh Environment Adaptation from China, China's leading monocrystalline pv cells product, with strict quality ...

[WhatsApp](#)

[LONGi LR4-60HPB-345W Solar Panel Specifications](#)

The LR4-60HPB-345W solar panels are compatible with various solar energy systems, including grid-tied and off-grid setups. Homeowners can also pair these panels with energy storage ...

[WhatsApp](#)



[Mission Solar MSE345SX5T 345W PERC 60 Solar Panel](#)

The MSE345SX5T PERC 60 mono-crystalline solar panel is a 60 cell solar panel with the highest power output in its class. It's high efficiency and certified reliability make it ideal for utility grid ...

[WhatsApp](#)



345 Watt Solar panels for sale , Prices, dimensions, weight, ...

345 Watt Solar panels' range of prices, dimensions, sizes, voltage output, specifications datasheets Ranges of information Voltage: 7.38V



~ 77.25V Amp: 0.04A ~ 12.97A

[WhatsApp](#)



[Mission Solar 345W Solar Panel 60 Cell MSE345SX5T](#)

Strong 40mm robust frame increases durability and strength and is able to withstand a heavy snow load up to 5600 Pa and large hail, according to Mission Solar 345W spec sheet. ...

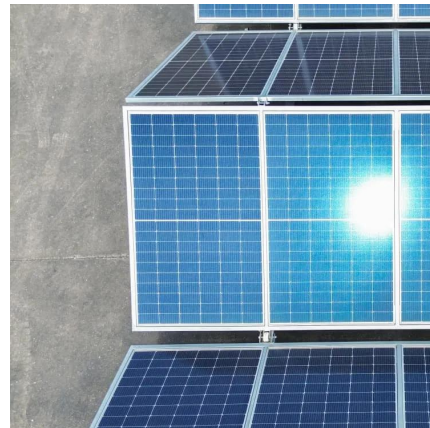
[WhatsApp](#)



[Q_CELLS_Data_sheet_Q.PEAK_DUO-G6+_DA_340-355_20...](#)

Higher yield per surface area, lower BOS costs, higher power classes, and an efficiency rate of up to 20.4 %. Optimal yields, whatever the weather with excellent low-light and temperature ...

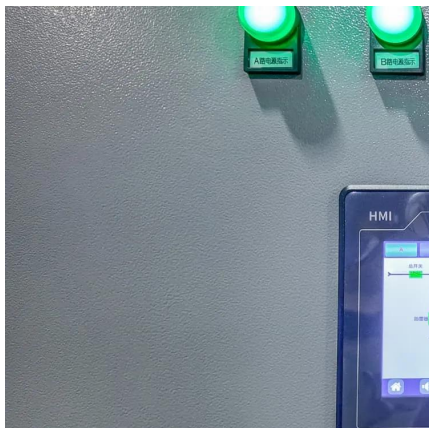
[WhatsApp](#)



Q Cells Q Peak Duo Photovoltaic Module Black G9 345 W ...

With Anti LID Technology, Anti PID Technology, Traceable Quality Tra Q, and Hot Spot Protect, they can withstand high performance and long-term yield security. The Q Cells G9+ 345W ...

[WhatsApp](#)





Mission Solar 345 Watt Mono 60 Cell All Black , GoGreenSolar

The Mission Solar 345 watt solar panels are made with of PERC (Passivated Emitter Rear Contact) technology. PERC solar cells add a layer of material to the back of the cell, to capture more ...

[WhatsApp](#)



Contact Us

For catalog requests, pricing, or partnerships, please visit:
<https://www.straighta.co.za>