

What are the reserve power sources for communication base stations





Overview

Telecom batteries for base stations are backup power systems using valve-regulated lead-acid (VRLA) or lithium-ion batteries. They ensure uninterrupted connectivity during grid failures by storing energy and discharging it when needed. What is a reserve source?

2 A reserve source or sources of energy shall be provided on every ship, to supply radio installations, for the purpose of conducting distress and safety radiocommunications, in the event of failure of the ship's main and emergency sources of electrical power.

What are the components of a base station?

Power Supply: The power source provides the electrical energy to base station elements. It often features auxiliary power supply mechanisms that guarantee operation in case of lost or interrupted electricity, during blackouts. **Baseband Processor:** The baseband processor is responsible for the processing of the digital signals.

Why are base stations important in cellular communication?

Base stations are important in the cellular communication as it facilitate seamless communication between mobile devices and the network communication. The demand for efficient data transmission are increased as we are advancing towards new technologies such as 5G and other data intensive applications.

Why do we need a base station?

Technological advancements: The New technologies result in evolved base stations that support upgrades and enhancements such as 4G, 5G and beyond, its providing faster speeds with better bandwidth. **Emergency services:** They provide access to emergency services, so that in case of emergency, people can call through their mobile phones.

Can a reserve source of power operate both HF and Inmarsat?



This reserve source of power is capable of simultaneously operating both the VHF radio, and the HF or Inmarsat satellite equipment.

What are the properties of a base station?

Here are some essential properties: Capacity: Capacity of a base station is its capability to handle a given number of simultaneous connections or users.

Coverage Area: The coverage area is a base station is that geographical area within which mobile devices can maintain a stable connection with the base station.



What are the reserve power sources for communication base station



[FCC Commercial Element 7 pool, section 17](#)

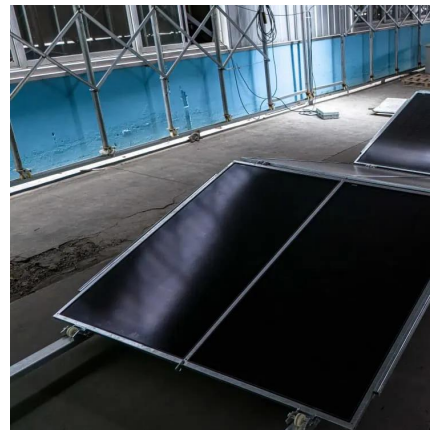
What is the meaning of "Reserve Source of Energy"? (B). Power to operate the radio installation and conduct Distress and Safety communications in the event of failure of the ship's main and ...

[WhatsApp](#)

[GMDSS Reserve Source or Power , Navigation Center](#)

The reserve source of energy must be capable of simultaneously operating the VHF radio installations, and either the MF/HF radio installation OR the INMARSAT ship's earth station ...

[WhatsApp](#)



[FCC Commercial Element 7 pool, section 17](#)

At all times while the vessel is at sea, a sufficient supply of electrical energy to operate the radio installations and charge any batteries which may be part of the reserve source of energy is ...

[WhatsApp](#)



A Device that Controls the Power Supply Sources of a Mobile

One of the most important factors for the effective operation of mobile communication systems is the uninterrupted and stable supply of



power to base stations. Uninterrupted power supply to ...

[WhatsApp](#)



[FCC Marine Radio Operator Permit Part 19-24](#)

In the event of failure of the main and emergency sources of electrical power, what is the term for the source required to supply the GMDSS console with power for conducting distress and ...

[WhatsApp](#)

Telecommunications base stations: Backup power distribution ...

A Caribbean operator credits his flooded station's survival to three things: Separated battery strings in water-tight compartments, fused junction boxes at every termination point, and a DC ...

[WhatsApp](#)



[Lithium Battery for Communication Base Stations Market](#)

The integration of renewable energy sources, such as solar and wind power, with communication base stations is also creating new opportunities for the deployment of lithium battery systems.

[WhatsApp](#)





Modeling and aggregated control of large-scale 5G base stations ...

The limited penetration capability of millimeter waves necessitates the deployment of significantly more 5G base stations (the next generation Node B, gNB) than their 4G ...

[WhatsApp](#)



[GMDSS. FCC Test 10 - Online Maritime Tests](#)

The supply of electrical energy sufficient to operate the radio installations for the purpose of conducting distress and safety communications in the event of failure of the ship's main and ...

[WhatsApp](#)

An optimal dispatch strategy for 5G base stations equipped with ...

Abstract The escalating deployment of 5G base stations (BSs) and self-service battery swapping cabinets (BSCs) in urban distribution networks has raised concerns ...

[WhatsApp](#)



Contact Us

For catalog requests, pricing, or partnerships, please visit:
<https://www.straighta.co.za>