

# **What are the battery capacities of base station communication equipment**





## Overview

---

Which battery is best for telecom base station backup power?

Among various battery technologies, Lithium Iron Phosphate (LiFePO<sub>4</sub>) batteries stand out as the ideal choice for telecom base station backup power due to their high safety, long lifespan, and excellent thermal stability.

Why do cellular base stations have backup batteries?

Abstract: Cellular base stations (BSs) are equipped with backup batteries to obtain the uninterruptible power supply (UPS) and maintain the power supply reliability. While maintaining the reliability, the backup batteries of 5G BSs have some spare capacity over time due to the traffic-sensitive characteristic of 5G BS electricity load.

What makes a telecom battery pack compatible with a base station?

Compatibility and Installation Voltage Compatibility: 48V is the standard voltage for telecom base stations, so the battery pack's output voltage must align with base station equipment requirements. Modular Design: A modular structure simplifies installation, maintenance, and scalability.

Are lithium-ion batteries a good choice for a telecom system?

Lithium-ion batteries have rapidly gained popularity in telecom systems. Their efficiency is unmatched, providing higher energy density compared to traditional options. This means they can store more power in a smaller footprint.

What type of battery does a telecom system need?

Beyond the commonly discussed battery types, telecom systems occasionally leverage other varieties to meet specific needs. One such option is the flow battery. These batteries excel in energy storage, making them ideal for larger installations that require consistent power over extended periods.



## Why do telecom systems need batteries?

Telecom systems play a crucial role in keeping our world connected. From mobile phones to internet service providers, these networks need reliable power sources to function smoothly. That's where batteries come into play. They ensure that communication lines remain open, even during outages or emergencies. But not all batteries are created equal.



## What are the battery capacities of base station communication equ

---



### [Use of Batteries in the Telecommunications Industry](#)

Large telecom offices and cell sites with dedicated generators have 3 to 4 hours of battery reserve time A large telecom office may have over 400 cells and 8000 gallons of electrolyte

[WhatsApp](#)

### Evaluating the Dispatchable Capacity of Base Station Backup ...

Evaluating the Dispatchable Capacity of Base Station Backup Batteries in Distribution Networks  
Published in: IEEE Transactions on Smart Grid ( Volume: 12, Issue: 5, September 2021 )

[WhatsApp](#)



### [Battery technology for communication base stations](#)

In order to ensure the reliability of communication, 5G base stations are usually equipped with lithium iron phosphate cascade batteries with high energy density and high charge and ...

[WhatsApp](#)



### What Are the Critical Aspects of Telecom Base Station Backup ...

Backup batteries must supply sufficient energy to maintain base station operations during power outages. Higher capacity (measured in ampere-





hours) and energy density ...

[WhatsApp](#)



### Evaluating the Dispatchable Capacity of Base Station Backup Batteries

Evaluating the Dispatchable Capacity of Base Station Backup Batteries in Distribution Networks  
Published in: IEEE Transactions on Smart Grid ( Volume: 12, Issue: 5, September 2021 )

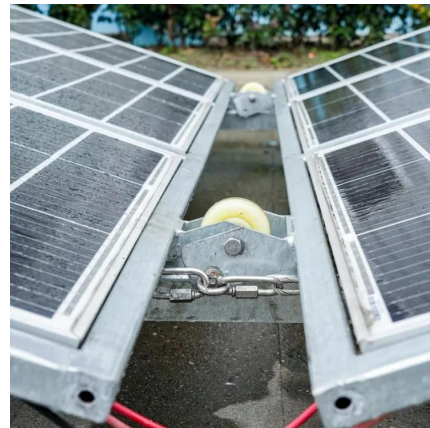
[WhatsApp](#)



### Long-Lasting 48V 100Ah LiFePO4 Battery Pack for Telecom, ...

Telecom Base Stations: Ensure uninterrupted operation of your 5G base station with this long-lasting and dependable LiFePO4 battery pack.  
Uninterruptible Power Supply (UPS): Provide ...

[WhatsApp](#)



### [MTS4L TETRA/LTE Base Station Specification Sheet](#)

C-SCCH - additional control channels on the main  
The MTS4L can be installed as a TETRA only base carrier, quadrupling existing capacity. station, but it can include the services for the ...

[WhatsApp](#)



## Understanding Backup Battery Requirements for Telecom Base Stations

Telecom base stations require reliable backup power to ensure uninterrupted communication services. Selecting the right backup battery is crucial for network stability and ...

[WhatsApp](#)



## Base Station Battery Capacity: The Backbone of Modern Telecom

Modern base stations consume 3-5kW--equivalent to 15 household refrigerators--with millimeter-wave units pushing 7kW. The root challenge lies in volumetric energy density: current Li-ion ...

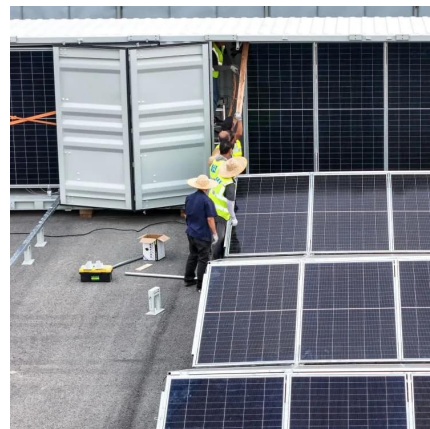
[WhatsApp](#)



## Designing Rugged, Thermally Stable Batteries for Military-Grade ...

Vehicle-Mounted & Base-Station Equipment - Higher capacity (20-50Ah) modules fit into 19" rack or MIL-STD mounting trays. - Must withstand 5 g random vibration and ...

[WhatsApp](#)



## Contact Us

For catalog requests, pricing, or partnerships, please visit:  
<https://www.straightta.co.za>