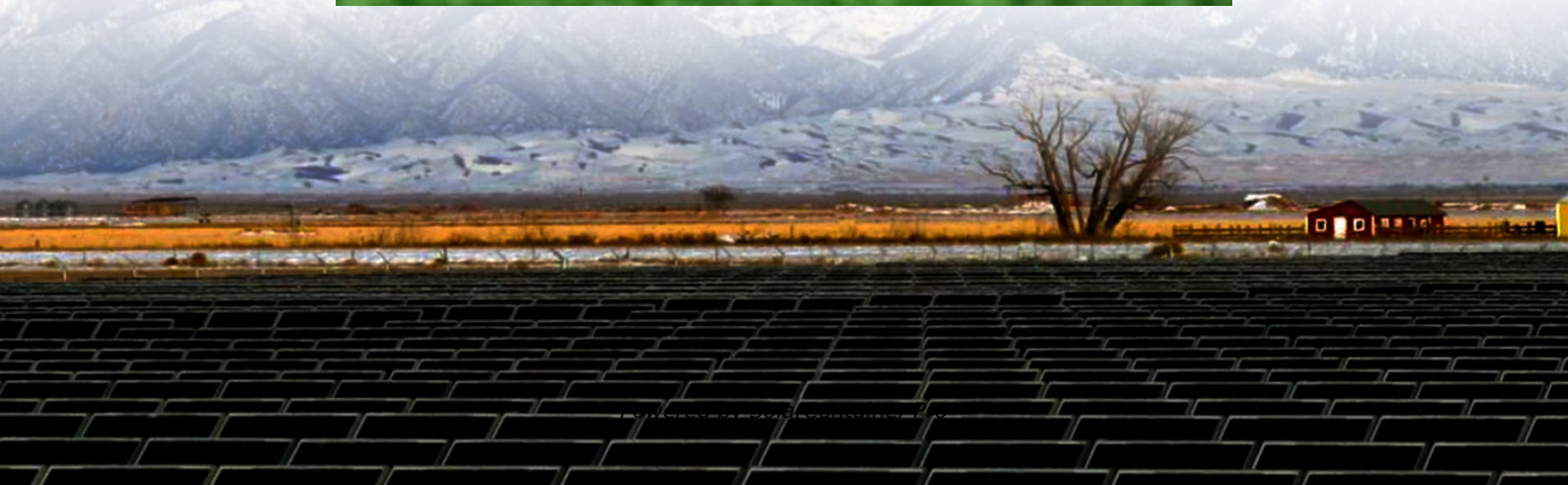


What are the approximate specifications and dimensions of a 70mm photovoltaic panel





Overview

What are the different sizes of solar panels?

There are 3 standardized sizes of solar panels, namely: 60-cell solar panels size. The dimensions of 60-cell solar panels are as follows: 66 inches long, and 39 inches wide. That's basically a 66×39 solar panel. But what is the wattage?

That is unfortunately not listed at all. 72-cell solar panel size.

What are the key specifications of solar panels?

The article covers the key specifications of solar panels, including power output, efficiency, voltage, current, and temperature coefficient, as presented in solar panel datasheets, and explains how these factors influence their performance and suitability for various applications.

How important are solar panels dimensions?

The dimensions of solar panels need proper attention in all solar installation projects. The optimal choice of solar panel dimensions positively affects efficiency performance when you use them for rooftop installations or for ground-mounted system applications. But how big are solar panels?

.

How big is a 60 cell solar panel?

The typical 60-cell residential solar panel is about 5.4 feet long and 3.25 feet wide, with a depth between 1 and 2 inches. While exact sizes for residential systems vary by manufacturer, there are also smaller panels for DIY solar projects and larger panels for commercial and industrial installations. How much do solar panels weigh?

.

How big is a residential solar panel?



A single residential solar panel typically has 60 PV solar cells and measures 5.4 feet by 3.25 feet (65 inches long by 39 inches wide). The panels are between 1.5 to 2 inches deep. Most 60-cell residential solar panels produce around 300 watts of power each.

How much do solar panels weigh?

If you're planning a rooftop mounted solar system, it's critical that you understand how much your solar panels weigh, so that you can determine if your roof can support the system. As with the size, the weight of a solar panel can vary by manufacturer. Typically, 60-cell residential solar panels weigh around 40 pounds a piece.



What are the approximate specifications and dimensions of a 70mm



[How Big is a Solar Panel? The Solar Panel Size Guide](#)

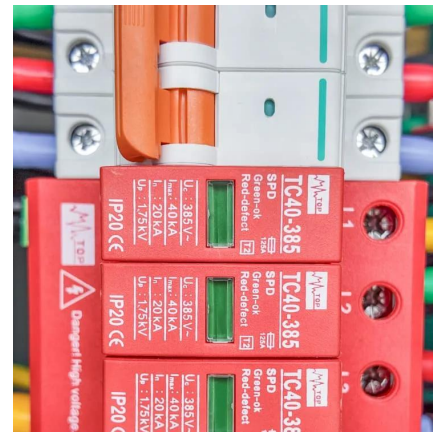
A single photovoltaic cell is 6 inches by 6 inches. A solar panel is comprised of these photovoltaic cells arranged in configurations of 32, 36, 48, 60, 70, and 96 cells. How many cells are in a ...

[WhatsApp](#)

[Solar Panel Dimensions and Sizes: Complete Guide](#)

Solar Panel Structure: The solar panel dimension, composition, and photovoltaic (PV) technology. Average Solar Panel Size: Available roof space, solar panels size, and the load your roof can ...

[WhatsApp](#)



[590 Photovoltaic panel specifications and dimensions](#)

590 Photovoltaic panel specifications and dimensions The JA Solar JAM72D40-590/LB-ITS is a 590W n-type Double Glass Bifacial Solar Panel with a silver frame. Part of the Deep Blue 4.0 ...

[WhatsApp](#)



Standard Solar Panel Sizes And Wattages (100W-500W Dimensions)

The goal here is to get to the average solar panel size by wattage. You can find typical dimensions of 100W, 150W, 170W, 200W, 200W, 220W,



300W, 350W, 400W, and 500W solar ...

[WhatsApp](#)



Specifications and dimensions of photovoltaic panel screws

Solar panel installation: used to secure panels to m that the solar panel is securely fastened to the bracket. The appropriate length needs to b recommended minimum ...

[WhatsApp](#)



Understanding Photovoltaic Panel Sizes - What You Need to ...

In this detailed guide, we'll explain how solar panel dimensions correlate with wattage, the different size standards, and how to calculate the best fit for your energy goals.

[WhatsApp](#)



[Solar Photovoltaic: SPECIFICATION, CHECKLIST AND GUIDE](#)

Assumptions of the RERH Solar Photovoltaic Specification These specifications were created with certain assumptions about the house and the proposed solar energy system. They are ...

[WhatsApp](#)

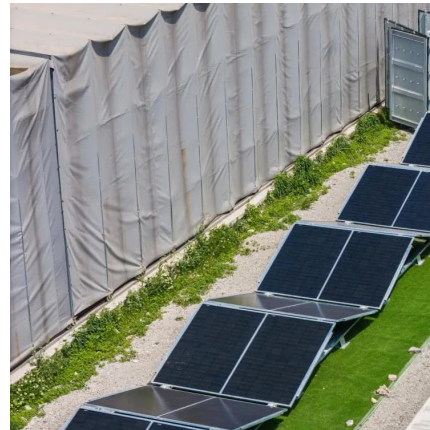




[Solar Panel Datasheet Specifications Explained](#)

The article covers the key specifications of solar panels, including power output, efficiency, voltage, current, and temperature coefficient, as presented in solar panel datasheets, and ...

[WhatsApp](#)



[Common Models Specifications and Dimensions of ...](#)

What are the characteristics of a solar panel?
Solar Panel Structure: The solar panel dimension, composition, and photovoltaic (PV) technology.
Average Solar Panel Size: Available roof ...

[WhatsApp](#)

Understanding Solar Panel Dimensions In 2025: A Complete Size ...

Explore the most common solar panel dimensions in 2025, including residential and commercial sizes. Learn how solar panel size dimensions affect power, installation, and ...

[WhatsApp](#)



Contact Us

For catalog requests, pricing, or partnerships, please visit:
<https://www.straighta.co.za>