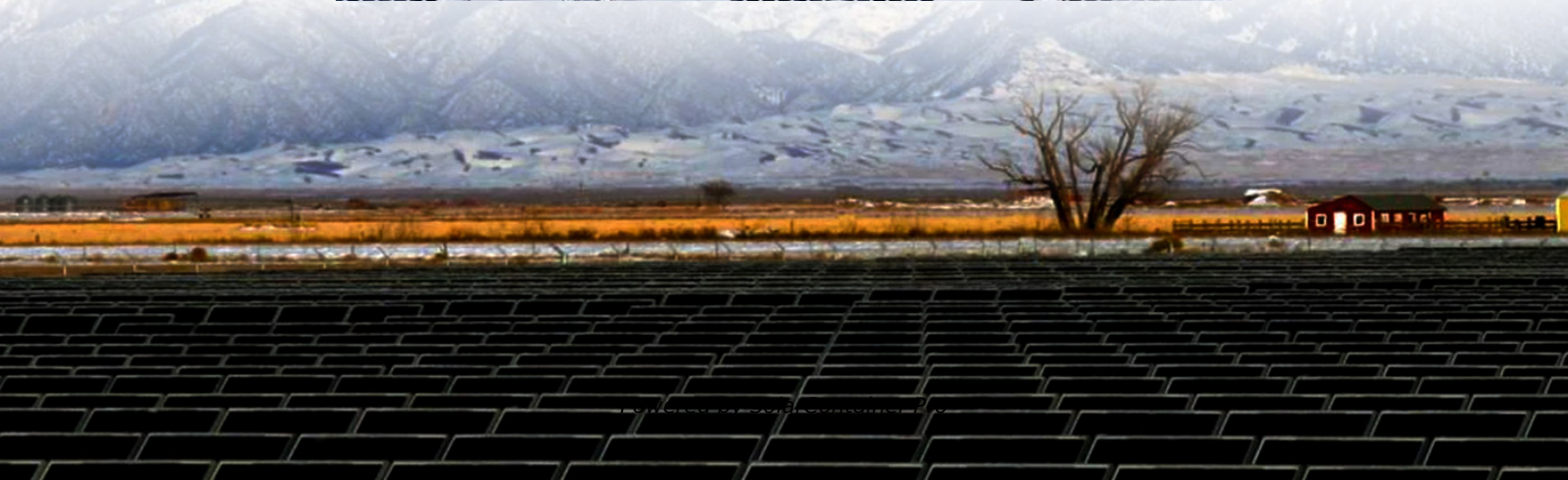
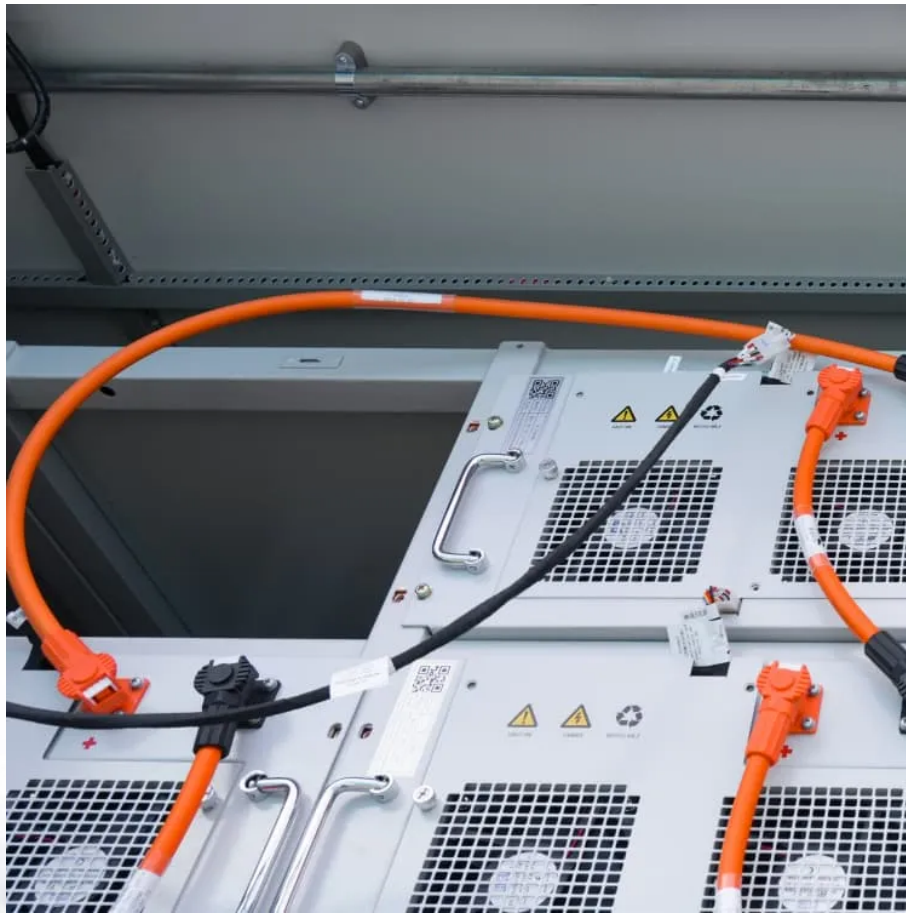


What are the EMS services for Panama s 5G communication base stations





Overview

Why should EMS use LTE & 5G?

Ensure constant, reliable connectivity day and night for ambulances, headquarters, and IoT devices through the most advanced LTE and 5G technology. Connect to multiple cellular networks at once, including public safety networks that provide EMS personnel with priority and pre-emption when they need it most.

What is a 5G radio access network?

The 5G Radio Access Network (RAN) is the interface between user devices and the 5G core network. It comprises base stations and small cells that manage radio communications, enabling ultra-fast data transfer and low-latency connections.

How 5G technology is transforming connectivity?

5G technology is revolutionizing connectivity, and the manufacturers of 5G equipment are leading this transformation. From modems and base stations to RAN, antenna arrays, and core networks, these companies are providing cutting-edge solutions. Leading vendors are offering innovative products to enhance network speed, coverage, and efficiency.

What is a 5G base station?

5G base stations operate on various frequency bands, including sub-6 GHz and mmWave, to deliver ultra-low latency, high data throughput, and enhanced capacity. They support massive MIMO (Multiple Input Multiple Output) technology, enabling improved coverage and simultaneous connections for a large number of devices.

What is a 5G modem?

5G modems are integrated into smartphones, laptops, routers, and other connected devices, ensuring seamless access to 5G services. Advanced 5G



modems also support standalone (SA) and non-standalone (NSA) network architectures, enabling a smooth transition and backward compatibility with 4G LTE networks.

What is a 5G NR Network?

As defined in 3GPP TS 38.300, the 5G NR network consists of NG RAN (Next Generation Radio Access Network) and 5GC (5G Core Network). As shown, NG-RAN is composed of gNBs (i.e., 5G Base stations) and ng-eNBs (i.e., LTE base stations). The figure above depicts the overall architecture of a 5G NR system and its components.



What are the EMS services for Panama s 5G communication base sta



Panamá avanza en la implementación de la red 5G - En ...

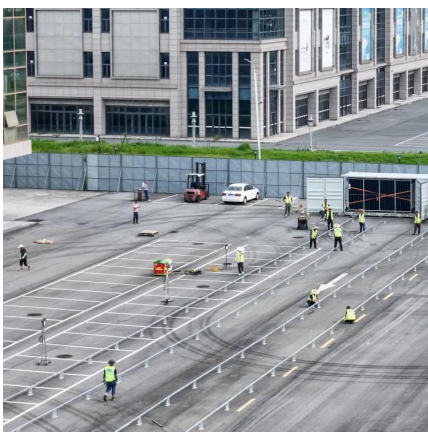
El despliegue inicial de la tecnología 5G se está enfocando en zonas industriales o en áreas con deficiente acceso a banda ancha, buscando así cubrir tanto la alta demanda de ...

[WhatsApp](#)

Telecom Electronic Manufacturing Services Market, By Product ...

The growing demand for high-performance networking devices, including 5G base stations, fiber optic modules, routers, and satellite communication systems, has prompted ...

[WhatsApp](#)



Human exposure to EMF from 5G base stations: analysis, ...

The increasing demand of new services and applications in mobile communications during the last years has resulted in the evolution of mobile communication standards, with ...

[WhatsApp](#)

ASEP 5G Deployment in Panama: New Regulatory Standards ...

ASEP has been working to create the necessary conditions for current and future operators to deploy 5G, including conducting pilot tests and



modifying technical regulations to ...

[WhatsApp](#)



[Panama: ASEP Promotes 5G Network Deployment](#)

In partnership with operators like Más Móvil Panamá and TIGO, ASEP is introducing strategic regulations and pilot programs designed to streamline the implementation ...

[WhatsApp](#)



Panama's Internet Revolution: Fiber, 5G, and Starlink Connecting ...

The government, through regulator ASEP, is preparing to auction 5G spectrum by end of 2024 to facilitate wider rollout trade.gov. In the meantime, the nascent 5G signals are ...

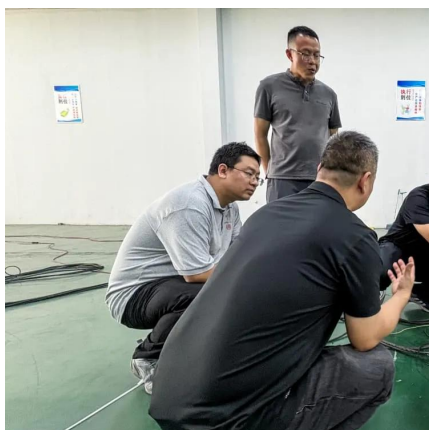
[WhatsApp](#)



Mobile Communication Network Base Station Deployment Under 5G

This paper discusses the site optimization technology of mobile communication network, especially in the aspects of enhancing coverage and optimizing base station layout. ...

[WhatsApp](#)





Market analysis: Are AI and 5G are revolutionizing fire and EMS

FSJA looks how AI and 5G are changing fire and EMS communications across North and South America Fire service communications and EMS communications are critical ...

[WhatsApp](#)



5G and LTE Wireless EMS Networking Solutions , Cradlepoint

Whether you're connecting stations, vehicles, devices in the field, or providing failover for E911 centers, wireless edge solutions for law enforcement are purpose-built for the job.

[WhatsApp](#)

Panamá avanza en la implementación de la red 5G - En Segundos Panama

El despliegue inicial de la tecnología 5G se está enfocando en zonas industriales o en áreas con deficiente acceso a banda ancha, buscando así cubrir tanto la alta demanda de ...

[WhatsApp](#)



Contact Us

For catalog requests, pricing, or partnerships, please visit:
<https://www.straightta.co.za>