

What are the AC modes of inverters





Overview

This is the most common mode available by default in your AC. It is the “cooling mode” which runs for the first time when you ON your brand new AC. The compressor starts running to produce cool air in the room. After achieving the desired room temperature, the compressor shuts off but the fan keeps on.

As the name suggests, this mode reduces the room humidity. Very handy in monsoon season or coastal areas near the sea. There is nothing worse than working on a humid day and sweat rolls over your face. With time the AC brings the room’s humidity to.

In this mode only the fan runs, the compressor remains OFF. No cooling is done as the compressor is OFF. Can be used to save power after the desired room temperature is achieved. The compressor consumes the majority of power in an AC. The AC compressor.

Other names include Quick Cool, Jet Mode, Power Chill, etc. For LG’s dual inverter AC this is called H’Cool or Himalayan Cool. Its working differs from model to model. But.

This mode is for use at night time. How does this work?

When the AC mode is set to the sleep mode. It increases the set temperature by 0.5 or 1 degree after each hour till 2 hours max.



What are the AC modes of inverters



[What is an Inverter Air Conditioner? - Pros and Cons](#)

What is an Inverter AC? An air conditioner or heat pump fitted with an inverter-controlled compressor is one that varies its output from about 40% to 120% of rated capacity.

[WhatsApp](#)

[Guidance for Operation Modes of the SPH Series Inverter](#)

Guidance for Operation Modes of the SPH Series Inverter Growatt develops three operation modes of SPH series, includes Load First, Grid First, and Battery First to meet ...

[WhatsApp](#)



[What Are the 4 Operating Modes of A Hybrid Inverter?](#)

Embracing the best of off grid inverter and on grid inverter, hybrid inverters have revolutionized the way we harness and utilize energy. With their seamless integration of solar power, grid ...

[WhatsApp](#)



How do various modes in the AC impact your electricity bill?

The Cool Mode is the default mode in an air conditioner - be it a Split AC or a Window AC. In this mode, the AC runs on the temperature it is



set and the fan speed on which it operates. The ...

[WhatsApp](#)



Different Modes in Air Conditioner: Cool, Dry, Fan, Turbo, Sleep

After achieving the desired room temperature, the compressor shuts off but the fan keeps on running. This was about a normal "non-inverter" AC. The nature of a compressor in ...

[WhatsApp](#)

REGULATING VOLTAGE: RECOMMENDATIONS FOR...

The new smart inverters are designed to allow customer-sited generation to act more in concert with the existing grid, with key features making these devices more grid friendly than their ...

[WhatsApp](#)



6.4. Inverters: principle of operation and parameters

The three most common types of inverters made for powering AC loads include: (1) pure sine wave inverter (for general applications), (2) modified square wave inverter (for resistive, ...

[WhatsApp](#)



[Inverter Air Conditioner: A Complete Guide \(for Beginner\)](#)

There are a few types of inverter air conditioners available in the market. The most common type of inverter air conditioner is the split unit or sometimes known as the mini split. ...

[WhatsApp](#)



Inverter AC vs. Normal AC: Which is Better? 2025 Buying Advice

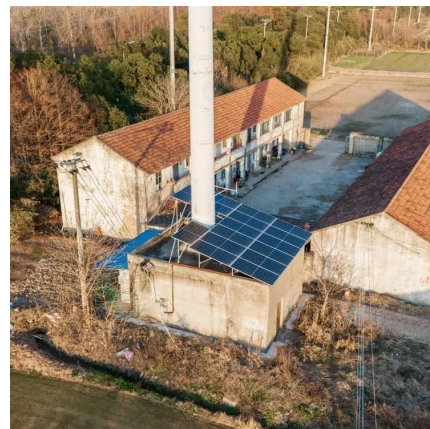
Inverter air conditioners offer greater energy efficiency, comfort, and long-term savings. That is the short answer. But for a detailed explanation of traditional vs inverter ACs, ...

[WhatsApp](#)

[Inverter and Types of Inverters with their Applications](#)

One function of Grid-connected inverter is to supply AC power to AC loads from storage devices (DC sources) while the other function of grid-connected inverter is to feed extra power into the ...

[WhatsApp](#)



Contact Us

For catalog requests, pricing, or partnerships, please visit:
<https://www.straighta.co.za>