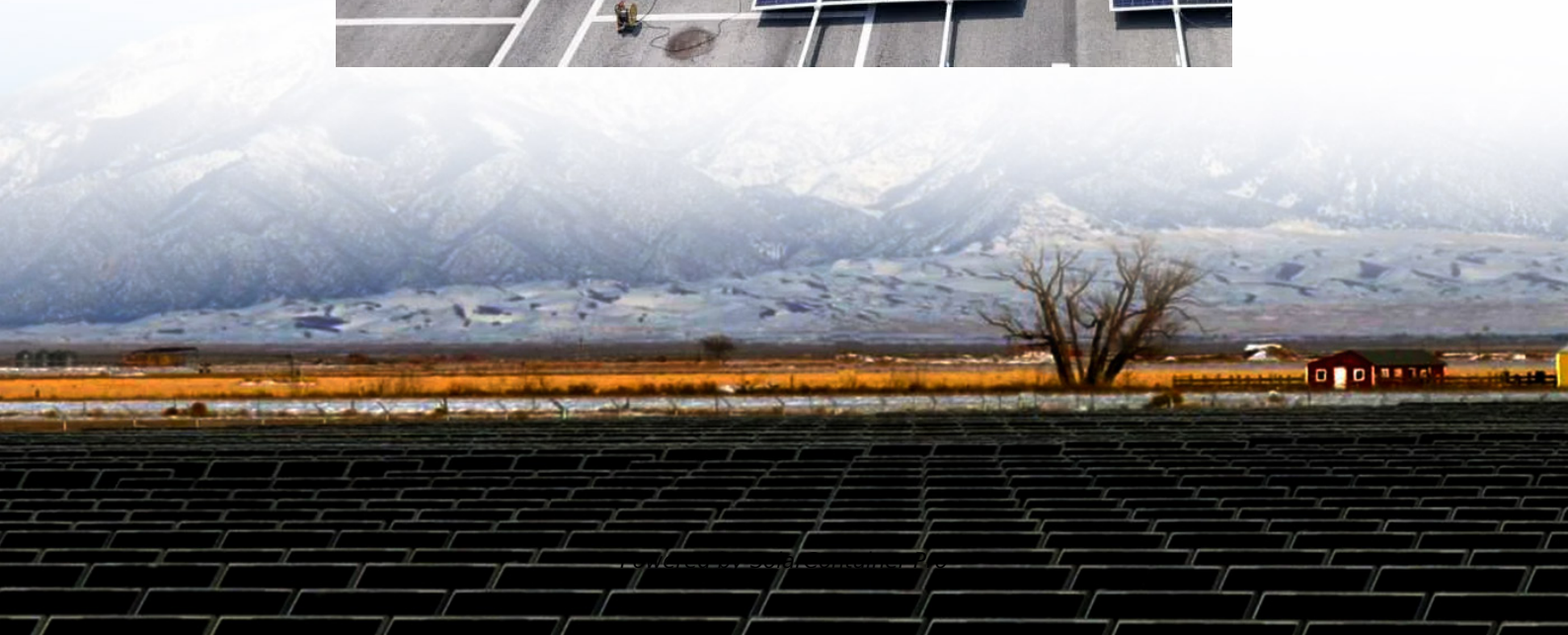


What Size of Outdoor Power Supply Should I Choose





Overview

How to choose a portable power station?

The next step is to consider the capacity of the portable power station. The capacity of the power station will determine how long it can run your devices. Capacity is measured in watt-hours (Wh) and indicates how much electricity the portable power station can store.

What wattage does a portable power station need?

For example, if you plan to power a device that requires 1,000 watts, you'll need a portable power station with an output wattage of at least 1,000 watts. Remember: some devices may have a higher startup or surge wattage, which is the extra wattage required when the device is first turned on. AC Output: This is the standard household outlet type.

What should you consider when buying a power station?

Aside from the capacity and output wattage, you'll also need to consider portability and other features of the power station. Some power stations are designed to be lightweight and portable, making them easy to carry around. Others may have additional features such as built-in AC outlets, USB ports, and even solar panels.

How to calculate portable power station wattage?

You can calculate this value by a simple method: Take the wattage each device you wish to power requires and multiply it by the number of hours they are used. After figuring out what size portable power station I need, you are probably asking yourself: Which one should I choose?

.

How much power does a small power station need?

A small power station, around 150Wh, will do just fine for powering just a few



devices, like phones or tablets. But if you are trying to keep your mini-fridge, lights, or machine running, you'll need something more substantial, like a 500Wh or 1000Wh model. If it will be a few hours, you may get by on something with a small capacity.

What are the different types of portable power stations?

Regardless of the energy source, portable power stations come in various sizes. These sizes range from small models to support small electrical devices to heavy-duty models to keep your devices running for several hours.

HOW DOES A PORTABLE POWER STATION WORK?

A portable power station stores electricity within a battery.



What Size of Outdoor Power Supply Should I Choose



How Do You Choose the Right Power Supply for Outdoor LED ...

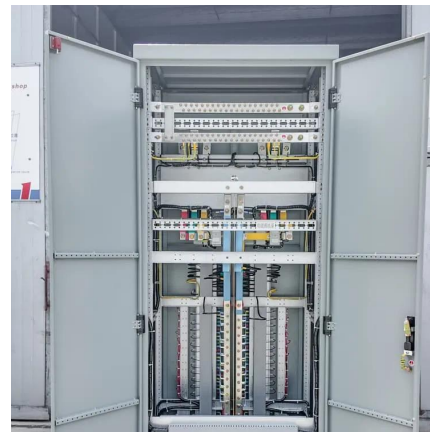
To choose the right power supply, you must match its voltage to your strip, calculate the total wattage plus a 20% safety buffer, and ensure it has an IP67 waterproof rating and ...

[WhatsApp](#)

What Size Portable Power Station Do I Need: Expert Tips Revealed

Knowing the wattage of your devices helps you pick the right size. By assessing your needs, you can ensure your power station will keep your devices running smoothly. ...

[WhatsApp](#)



What Power Supply Do I Need? How To Choose The Right One

Choose the Right Size PSU Often referred to as form factor, physical size is also an important consideration when choosing a power supply. There are mainly two form factors ...

[WhatsApp](#)

How to Select the Right Size Portable Power Station For Your ...

Sizing a portable power station is far more simple than you might imagine. Below is our six-step process we walk everyone through when



trying to determine the best power device for their ...

[WhatsApp](#)



Portable Power Station Sizing: Solar Generator Selection Guide

These devices vary widely in size and energy output, and you have many options out there. When you're shopping for a portable power station, you should start by asking yourself "What size ...

[WhatsApp](#)

[What Gauge Wire Should I Use For Outdoor Lighting](#)

What Gauge Wire Should I Use For Outdoor Lighting? Selecting the correct wire gauge for outdoor lighting is crucial for safety and optimal performance. Using a wire that is too ...

[WhatsApp](#)



Choosing the Right Power Station Size , Portable Energy Guide

Learn how to choose the right size power station for your needs. This guide covers wattage, watt-hour ratings, scenarios from camping to home backup, and how portable units ...

[WhatsApp](#)





How to Select the Right Size Portable Power Station For Your ...

Sizing a portable power station is far more simple than you might imagine. Below is our six-step process we walk everyone through when trying to determine the best power ...

[WhatsApp](#)



[How to Choose an Outdoor Power Supply in 2025: From ...](#)

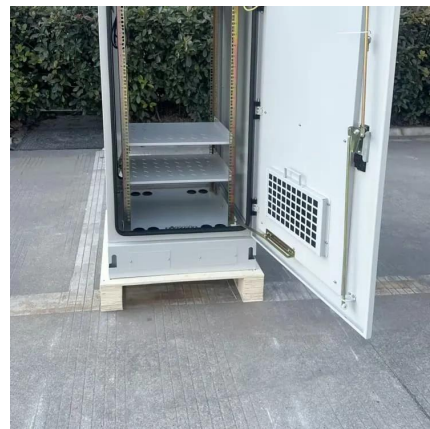
Here's a comprehensive guide on how to choose the perfect outdoor power supply for your requirements. Key Considerations for Choosing an Outdoor Power Supply Power Capacity: ...

[WhatsApp](#)

What factors should be considered when choosing an outdoor power supply

2. The selection of outdoor power supply should consider the output power Power size: determines which devices the power supply can power. The greater the power, the more ...

[WhatsApp](#)



Contact Us

For catalog requests, pricing, or partnerships, please visit:
<https://www.straightta.co.za>