

# Weight of a 1-watt solar panel





## Overview

---

In summary, the weight of a 1 watt solar panel typically falls between 0.5 to 1 kilogram, influenced by factors like material composition and manufacturing processes, with a significant distinction between various types of panels. How much do solar panels weigh?

Alright, here are 6 sampled solar panels with the wattages, dimensions, total weight, and weight per square foot (weight per square foot is calculated by dividing the total weight by solar panel roof area): As we can see, 100W solar panels weigh about 10-15 lbs, 200W solar panels about 20-30 lbs, and 400W Tesla roof panel weighs 51.8 lbs.

How much does a 60 cell solar panel weigh?

Every brand of solar panels has slight variations in their dimensions and weights, according to manufacturing material. Although the weight of different brands of solar panels varies, an average 60 cell solar panel weighs about 40 pounds. Other important factors are wattage and voltage/current requirements.

How much does A 72-cell solar panel weigh?

72-cell solar panels weigh around 61.73 pounds. As you may recall, these larger panels usually provide 350 to 400 watts. The weight of a solar panel per unit is an important consideration when deciding which size is best for your home, which we will discuss further in a later section.

How much weight do solar panels add to a roof?

When figuring out how much weight do solar panels add to a roof, that would be quite useful data to have. All individual solar panels weigh less than 100 lbs. However, solar systems with 8kW rated capacity and above add more than 1,000 lbs to your roof. Not to worry, however.

How much wattage does a solar panel have?



For larger installations, 72-cell panels, arranged in a 6 by 12 grid, are favored, offering wattage typically ranging from 415 to 450 watts. In between these sizes, there are also 96-cell panels, providing a balance between residential and commercial needs, with wattage falling in the range of 520 to 550 watts.

How much does an RV solar panel weigh?

RV solar panels are generally rated at 100-150 watts and are smaller and lighter than residential solar panels. In general, the average rigid solar panel used in RV solar systems is rated at 100 Watts and weighs about 15lbs. The following table compares the weight of some of the most popular RV solar panels:



## Weight of a 1-watt solar panel

---



### How Much Do Solar Panels Weigh? Dimensions & Weight of ...

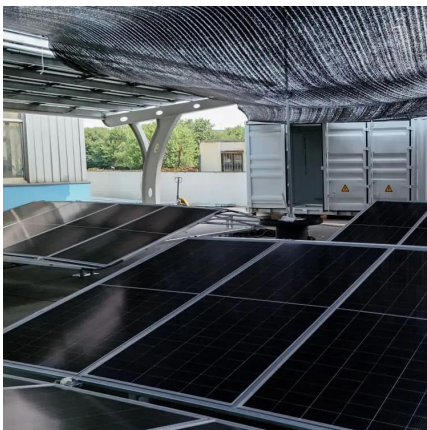
How Much Do Residential Solar Panels Weigh? The manufacturer, model, and quality of the solar panel are prime factors when calculating how much do residential solar ...

[WhatsApp](#)

### [Solar Panel Size And Weight: A Comprehensive Guide](#)

When considering residential solar panels, typical configurations consist of 60 cells measuring approximately 3.25 feet by 5.5 feet. These panels cover an area of 17.62 square ...

[WhatsApp](#)



### [How Big Are Solar Panels? Solar Panel Size and Weight](#)

In this blog, we'll explain the typical size and weight of solar panels used for homes, businesses, and farms. By the end, you'll have a clear picture of what to expect when ...

[WhatsApp](#)

### 100 Watt Solar panels for sale , Prices, dimensions, weight, ...

100 Watt solar panels Overall, 100 watt solar panels are smaller in size and provide less power output than larger solar panels, but they are still





a cost-effective and efficient way to generate ...

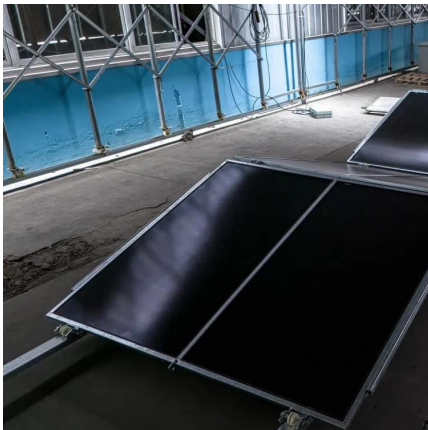
[WhatsApp](#)



### How many pounds does a 575 solar panel weigh? , NenPower

When discussing solar panel weights, specific details can be derived about a 575-watt solar panel's mass. 1. A typical 575-watt solar panel weighs between 50 and 70 pounds, ...

[WhatsApp](#)



### [How much does a 1 watt solar panel weigh? , NenPower](#)

How much does a 1 watt solar panel weigh? The weight of a 1 watt solar panel typically ranges between 0.5 to 1 kilogram, depending on the materials used and the specific ...

[WhatsApp](#)



### Solar Panel Size and Weight

Multiple factors determine the size and weight of solar panels. It can be the wattage requirement, the type of material in a solar panel, and the brand of solar panel used. However, according to ...

[WhatsApp](#)





### **Solar Panel Dimensions(Size): 300W,400W,1 Kw,How Big It Is?**

The size of a solar panel largely depends on the wattage rating. For example, a 300W solar panel typically measures about 1.6m x 1m, a 400W solar panel typically measures about 1.7m x ...

[WhatsApp](#)



## **Contact Us**

---

For catalog requests, pricing, or partnerships, please visit:  
<https://www.straighta.co.za>