

Wall-mounted solar panels must be lower than the container





Overview

Can solar panels be mounted on a wall?

Roof-mounted solar panels are usually titled at a 20-50 degree angle, which allows them to capture sunlight when the sun is high in the sky. But most wall-mounted panels are parallel to the wall, or only slightly tilted. It's also harder to fit as many solar panels on a wall as you would on a roof.

Can solar panels be installed on a south-facing wall?

Wall-mounted solar panels are typically installed as modules on a south-facing wall. It's not logical to install your solar panels on a wall that isn't south-facing since wall-mounted systems already have setbacks in their energy generation due to their slope.

What is a solar panel wall mount?

Solar Panel Wall Mount: The Ultimate Guide for Installation and Usage - Solar Panel Installation, Mounting, Settings, and Repair. A solar panel wall mount is a mounting system that secures solar panels onto walls. These mounts are especially useful for buildings with limited roof space or for aesthetic preferences.

Why do solar panels need a wall mount?

Maximising sun exposure is crucial for solar energy production. Wall mounts optimise this exposure by positioning the solar panels at an angle that "catches" the sun. It's the fine-tuned positioning that elevates them from an energy-saving mechanism to sparks of ingenuity, boosting what nature gives us.

Do wall-mounted solar panels need special mounting hardware?

Wall-mounted solar panel systems require special mounting hardware to install vertically. Staging is often necessary since there are more safety considerations than with roof or ground-mounted solar panels. It's reasonable



to assume that higher installation costs will follow when special hardware is necessary for a project.

Are wall-mounted solar panels better than a roof-mounted system?

Wall-mounted solar panels are usually less effective than roof-mounted systems because they often have a steeper angle, so they don't receive as much sunlight throughout the day. Roof-mounted solar panels are usually titled at a 20-50 degree angle, which allows them to capture sunlight when the sun is high in the sky.



Wall-mounted solar panels must be lower than the container



[SOLAR PANELS ON SHIPPING CONTAINERS EXPLAINED](#)

Wall solar panels are higher than containers Yes, solar panels can be mounted on a wall, either attached parallel to it, tilted at an angle, or hung as a canopy. This is usually a good option for ...

[WhatsApp](#)

How much solar media should be added for wall-mounted solar panels

To determine the optimal amount of solar media required for wall-mounted solar panels, two essential aspects must be considered: 1. The surface area available f...

[WhatsApp](#)



[What You Need to Know about Wall-Mounted Solar Panels](#)

Solar panel modules can be mounted parallel to a wall, tilted away from it, or as an overhanging canopy. Your solar panel system will have a natural slope that is substantially ...

[WhatsApp](#)



Solar Panel Wall Mount: The Ultimate Guide for Installation and ...

Tilt Wall Mounts provide adjustability to the solar panel's angle. They are a fantastic option when you want to catch more sunlight during winter



months when the sun sits ...

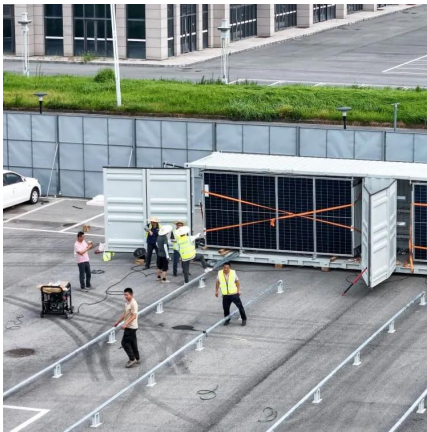
[WhatsApp](#)



Wall Mounted Solar Panel Systems: Everything You Need to Know

We've found that while wall-mounted systems may have slightly lower overall performance due to their orientation, they can be highly efficient in certain situations.

[WhatsApp](#)



How much energy does a wall mounted solar panel consume?

1. The amount of energy consumed by a wall-mounted solar panel depends on several factors, including its size, efficiency, and the amount of sunlight it receives. It typically ...

[WhatsApp](#)



[The Complete Guide to Wall-Mounted Solar Panels](#)

Wall-mounted solar panels are typically installed as modules on a south-facing wall. It's not logical to install your solar panels on a wall that isn't south-facing since wall ...

[WhatsApp](#)





How high is the wall mounted solar panel and the inner tank?

When discussing the installation of solar panels and associated components, several factors will directly influence the elevation of both wall-mounted solar panels and inner ...

[WhatsApp](#)



[Wall-Mounted Solar Panels: Your Questions Answered](#)

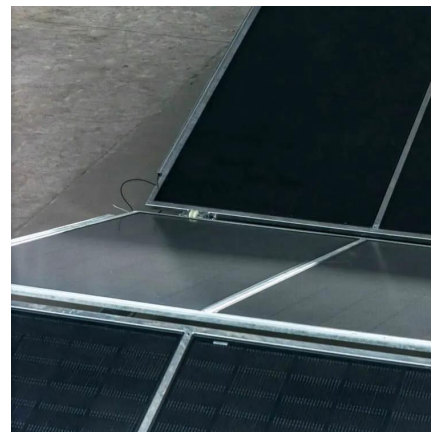
Wall-mounted solar panels are typically installed as modules on a south-facing wall. It's not logical to install your solar panels on a wall that isn't south-facing since wall ...

[WhatsApp](#)

How to install wall mounted solar panels in a tile house

As solar technology continues to advance, investing in wall-mounted panels becomes increasingly attractive for those seeking sustainable energy solutions. With careful ...

[WhatsApp](#)



[EXPLORATORY STUDY ON ADAPTABILITY OF WALL ...](#)

This study acts as an exploratory study which aims to investigate the feasibility and adaptability of implementing wall-mounted solar panels in high-rise buildings in Sri Lanka. Data was gathered ...

[WhatsApp](#)



Contact Us

For catalog requests, pricing, or partnerships, please visit:
<https://www.straighta.co.za>