

Using large inverters for small power appliances





Overview

Before we go any further, we highly recommend that you choose a pure sine wave inverter. This type of inverter delivers high-quality electricity, similar to your utility company. This way, none of your appliances run the risk of being damaged. Now, when it comes to sizing your inverter, you always need to check.

We have summarized the appliances that inverters from 300W to 3000W can run depending on their rated maximum power. Note to our readers: Use the above formula to determine.

Using an inverter that is significantly larger than the power requirements of your appliances can lead to reduced efficiency. Oversized inverters may operate at lower efficiency levels, resulting in wasted energy and increased operating costs.



Using large inverters for small power appliances



[Can I Use an Inverter to Power My House?](#)

Depending on its capacity and your home's energy requirements, an inverter can provide full or partial power. For small homes or emergency backup, a low-capacity inverter (e.g. 500 ...

[WhatsApp](#)

What Size Power Inverter Is Needed for a House [Full Guide]

In general, a 3000W to 5000W inverter works well for most homes, but the exact size depends on factors like household appliances, total power consumption, and battery ...

[WhatsApp](#)



What Is An Inverter? , Definition, Types, Uses, How It Works

An inverter is a vital electrical device that converts direct current (DC) into alternating current (AC), which is used to power many household appliances and industrial ...

[WhatsApp](#)

What Size Inverter Do You Need? A Complete Guide for Home, ...

Choosing the right inverter size is crucial--too small, and your appliances won't work; too large, and you'll waste money. This guide will help you



determine the ideal inverter ...

[WhatsApp](#)



[How to Size an Inverter and UPS for Home Appliances?](#)

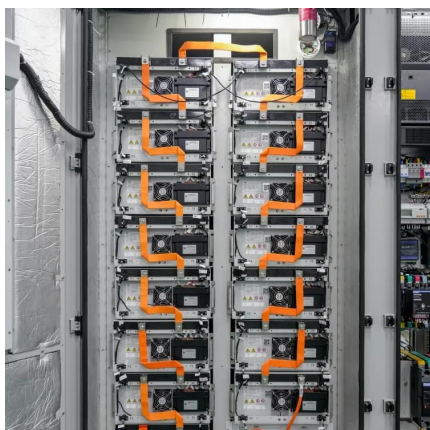
This guide will help you understand how to determine the suitable size of inverter for home appliances by evaluating your power needs, considering essential factors, and avoiding ...

[WhatsApp](#)

What Size Inverter Needed To Run A House: A Complete Guide

Large inverters range from 2,000 watts to 10,000 watts or more and are essential for running multiple appliances simultaneously. They are suitable for larger households or off-grid ...

[WhatsApp](#)



[What Happens If the Inverter Is Too Big](#)

In this article, we'll explore the potential implications of using an inverter that is too big for your power needs, shedding light on the effects and considerations associated with ...

[WhatsApp](#)



Contact Us

For catalog requests, pricing, or partnerships, please visit:
<https://www.straighta.co.za>