

UK three-phase inverter structure





Overview

The device structure consists of a MOSFET-like gate and a p-n-p BJT output stage. The gate-emitter voltage V_{GE} controls the conductivity of the channel, while the collector-emitter current I_{CE} flows through the bipolar structure.



UK three-phase inverter structure



Reduced-order Structure-preserving Model for Parallel ...

By structure preserving, we mean that the reduced-order model itself is a three-phase inverter that is also composed of an LCL filter, a power controller, current controller, and PLL, i.e., it has the ...

[WhatsApp](#)

What Is a 3-Phase Inverter, and When Should You Use One?

The two main types of inverters are three-phase and single-phase, with three-phase models offering greater power efficiency, larger load capabilities, stable load balancing, and voltage ...

[WhatsApp](#)



Overview of three-phase inverter topologies for distributed

In this paper, three commonly used inverter topologies are discussed where each category is further classified into several sub-categories. In Fig. 1(a) a three-phase three-wire inverter ...

[WhatsApp](#)

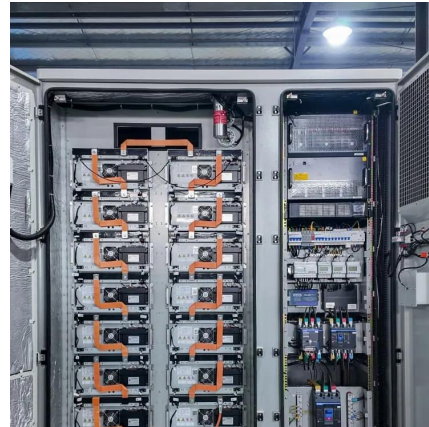
Phase-Locked Loops for Grid-Tied Inverters: Comparison and ...

This paper presents quantified analyses and comparisons of the main PLL techniques based on different structures for both single phase and



3-phase systems. A more comprehensive ...

[WhatsApp](#)



[A new modular three-phase inverter based on SEPIC-CUK](#)

In this paper, a new modular inverter topology for grid-connected photovoltaic systems (PV) based on the dual-winding isolated SEPIC/Cuk converter is proposed. The inverter modular ...

[WhatsApp](#)



Three-Phase Inverter Design , Tutorials on Electronics , Next ...

The most common three-phase inverter topology is the Voltage Source Inverter (VSI), where a fixed DC voltage is converted into a variable AC output. The VSI employs six power switches ...

[WhatsApp](#)



Fox ESS T Series (G3) Three Phase String Inverter from £616.65

5 kW o 10 kW o 15 kW o 20 kW o 25 kW --
3-Phase, Dual-MPPT, IP65 Tailored for high-demand residential and small-scale commercial solar systems, the T Series (G3) brings exceptional ...

[WhatsApp](#)





[Sungrow 50kW P2 Optimised Three Phase Inverter](#)

Sungrow 50kW P2 Optimised Inverter (ASG02270) The Sungrow SG50CX-P2 is a three-phase optimised string inverter designed for commercial applications. It features multiple MPPTs for ...

[WhatsApp](#)



Contact Us

For catalog requests, pricing, or partnerships, please visit:
<https://www.straighta.co.za>