

Trough type concentrated solar power generation system





Overview

A parabolic trough (PT) solar thermal electric plant is a concentrated solar power (CSP) facility that uses curved mirror collectors to focus sunlight onto receiver tubes converting solar energy into thermal energy via a heat transfer fluid circulating through the system.



Trough type concentrated solar power generation system



A mutually beneficial system incorporating parabolic trough

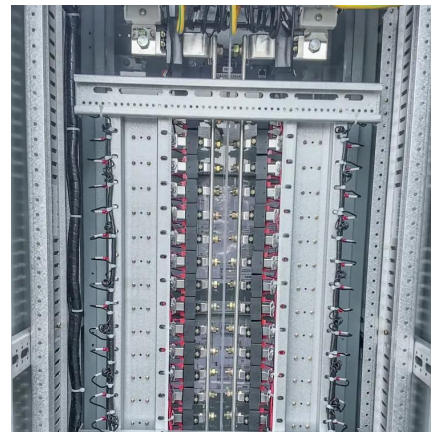
To address this issue and maximize the capture of solar irradiation, a novel parabolic trough collector system integrated with photovoltaic cells and a high-reflective ...

[WhatsApp](#)

[Concentrating Solar Power: Energy from Mirrors](#)

The southwestern United States is focus-ing on concentrating solar energy because it's one of the world's best areas for sun-light. The Southwest receives up to twice the sunlight as other ...

[WhatsApp](#)



High temperature central tower plants for concentrated solar power

Among the diverse technologies for producing clean energy through concentrated solar power, central tower plants are believed to be the most promising in the next years. In ...

[WhatsApp](#)



[Concentrating Solar Power \(CSP\) Technology](#)

A brief video showing how concentrating solar power works (using a parabolic trough system as an example) is available from the Department of Energy Solar Energy Technologies Web site.



[WhatsApp](#)



[Parabolic-trough concentrating solar power systems](#)

A parabolic-trough collector (PTC) is a linear-focus solar collector, basically composed of a parabolic-trough-shaped concentrator that reflects direct solar radiation onto a ...

[WhatsApp](#)



Parabolic-Trough Concentrating Solar Power (CSP) Systems

These facilities, which were the norm for the sector at the end of 2010, can be broken down into three subsystems: the solar system; the system for thermal energy storage; ...

[WhatsApp](#)



[How Does a Concentrated Solar Power Plant Work? , CSP](#)

How Does a Dish-type Concentrated Solar Power System Work? In a concentrated solar power plant, a parabolic-shaped dish collects solar energy and focuses it onto a receiver.

[WhatsApp](#)





[Parabolic-trough concentrating solar power systems](#)

This chapter gives an overview of the parabolic-trough collector (PTC) technology, which has achieved a high degree of maturity. It includes a brief history of the technology, ...

[WhatsApp](#)



[Concentrating Solar Power Parabolic Trough Systems](#)

In this b-roll, the parabolic solar trough is just one of the several types of concentrating solar power technologies that focus the sun's heat using reflective surfaces to ...

[WhatsApp](#)

10.2. Parabolic Trough Collector Systems , EME 811: Solar ...

Parabolic trough technology is the most widespread among utility-scale solar thermal plants. The potential of this type of concentrating collectors is very high and can provide output fluid ...

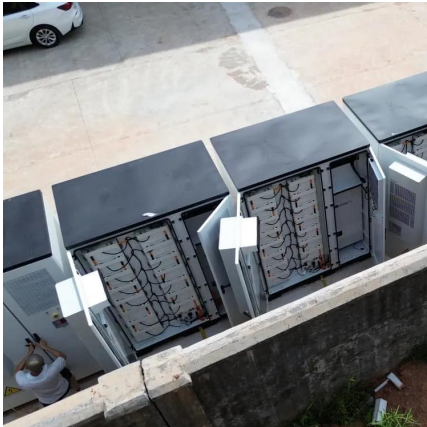
[WhatsApp](#)



A thorough review of the existing concentrated solar power ...

Solar thermal power plants today are the most viable alternative to replace conventional thermal power plants to successfully combat climate change and global warming. ...

[WhatsApp](#)



Parabolic-Trough Concentrating Solar Power (CSP) Systems

A parabolic-trough concentrator (PTC) is a type of linear-focus solar collector that reflects direct solar energy onto a receiver or absorber tube that is situated in the parabola's ...

[WhatsApp](#)



Contact Us

For catalog requests, pricing, or partnerships, please visit:
<https://www.straighta.co.za>