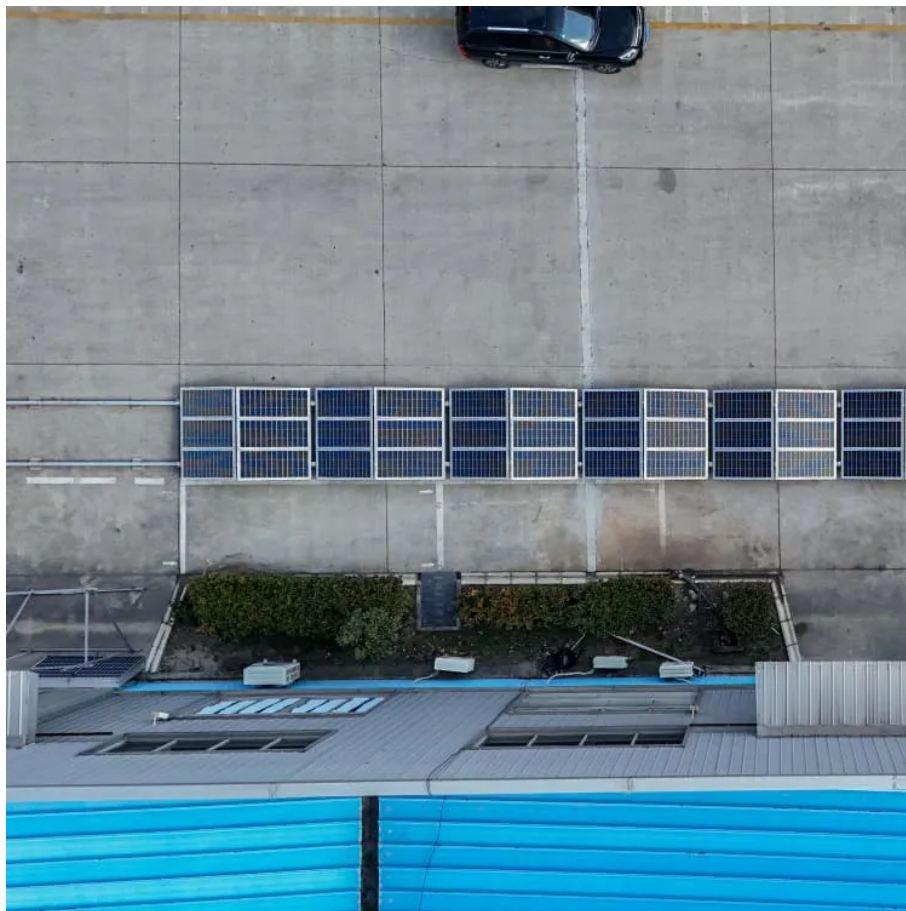


**The inverter will cut off the power if the voltage is low**





## Overview

---

Why do inverters have a low voltage cut-off?

Adding an over-discharge protection feature to the inverter by setting a higher LVC (Low voltage cut-off) prevents the battery from going into the deep discharge state and overworking itself. A higher LVC is beneficial for the battery. The higher the LVC, the longer the battery life.

Why do inverters keep running down the battery?

When the battery gets drained, and the voltage gets too low, the inverters emit a steady alarm — and keep drawing power. So if I'm outside, or have my headphones in, or am asleep, they'll just keep running down the battery until it needs to be resuscitated. I'm surprised they make inverters like this.

Why does my inverter keep shutting down at 10 volts?

So the voltage may briefly dip below 10 volts for an instant, then spring back up to maybe 11.2 volts. Now if your inverter shuts down at say 10 volts, you might have very frequent shutdowns even with the battery at 11.5 volts. The battery internal resistance is also going to be higher at low states of charge, which makes all this a lot worse.

What happens when the expert inverter reaches the battery cut-off voltage?

Here's what typically happens when the Axpert inverter reaches the battery cut-off voltage: Voltage Threshold: The Axpert inverter is programmed with a specific voltage threshold (battery cut-off voltage), which is typically set slightly above the minimum safe voltage for the connected batteries. This threshold is often user-configurable.

Does a hybrid inverter/charger have low voltage protection?

Both our standard inverter and hybrid inverter/chargers have low voltage protections. In a hybrid inverter, you may get warning about "battery low voltage" or "battery over-discharge", and in a standard system your charge



controller and inverter may show a fault or shut off due to low battery voltage.

Do inverters have a shut off voltage?

When you use them off grid often small battery banks will go below 11.5 starting heavy loads and the sound starts. Usually push them further and they do have a shut off voltage, usually 10.5 to 11 volts. As an Alternative better inverters have a programmable voltage cutoff.



## The inverter will cut off the power if the voltage is low

---



[Inverter goes ON and OFF when batteries get low](#)

Inverters have two settings associated with low voltage disconnect: 1) At what voltage does it cut off. 2) At what voltage does it power back up (recovery voltage). If these ...

[WhatsApp](#)

### Low Voltage Disconnect Suggestion , DIY Solar Power Forum

I would place a relay on the output wires from the inverter that is triggered to cut off the AC power when the batteries fall below a specified voltage. I assume this means that I ...

[WhatsApp](#)



### Low voltage shutoff for power inverters? (solar forum at permies)

When the battery gets drained, and the voltage gets too low, the inverters emit a steady alarm -- and keep drawing power. So if I'm outside, or have my headphones in, or am asleep, they'll ...

[WhatsApp](#)

### Set 12volt 3000watt Renogy inverter to shut down at a specified low voltage

Renogy 3000W 12V Pure Sine Wave Inverter  
Upgrade your off-grid system with the Renogy 3000W Pure Sine Wave Power Inverter. Whether



for your van or cabin, this ...

[WhatsApp](#)



### [Do Inverters Turn Off When Voltage is too low?](#)

Most inverters have a low voltage cut off, i.e., if batteries drop below X, inverter shuts down. Most inverters will not operate if they can't provide rated current, voltage and ...

[WhatsApp](#)



### **Why is my inverter shutting off due to "battery low voltage"?**

In a hybrid inverter, you may get warning about "battery low voltage" or "battery over-discharge", and in a standard system your charge controller and inverter may show a ...

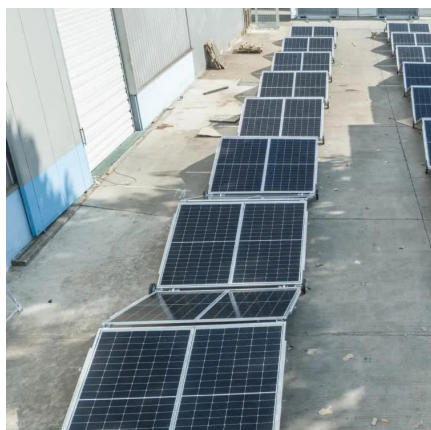
[WhatsApp](#)



### [12V Inverter Low Voltage Cutoff : r/diySolar](#)

Set your low limit to shut off the relay at 12.5vdc (assuming lead acid batteries) and your high limit "on" voltage to whatever you prefer (I run 14.5vdc on and 12.5vdc off). Some inverters have ...

[WhatsApp](#)





### [Low voltage cutoff circuit for Inverters - Circuits DIY](#)

At this time the battery has low charge but the inverter is eating max current out of it. This can lead to extremely discharged battery if there is no low voltage cutoff protection.

[WhatsApp](#)



### **Prevent tubular Battery Failure: Use Low Voltage Battery Cutoff**

The inverter turns off when the battery voltage reaches a pre-determined low level. But it is too familiar for the users to restart the inverter/UPS multiple times to extract any power ...

[WhatsApp](#)

### [12V Inverter Low Voltage Cutoff : r/diySolar](#)

Set your low limit to shut off the relay at 12.5vdc (assuming lead acid batteries) and your high limit "on" voltage to whatever you prefer (I run 14.5vdc on and 12.5vdc off). Some ...

[WhatsApp](#)



### **After batteries get low, system shuts down and I have to manually ...**

I have different equipment, but have run into a (maybe) similar problem. At a 19% state of charge, the battery voltage may have dropped to a Low Battery Cut Off, at which equipment shuts ...

[WhatsApp](#)



## Contact Us

---

For catalog requests, pricing, or partnerships, please visit:  
<https://www.straightta.co.za>