

The inverter can be connected to lithium batteries





Overview

Should you use a lithium-ion battery for a home inverter?

A lithium-ion battery for a home inverter can significantly enhance your home's energy storage capabilities. This translates to more reliable power during outages and better management of renewable energy resources like solar panels. Lithium-ion batteries require less maintenance and have a longer lifespan compared to traditional batteries.

Which battery should I use for my inverter?

When it comes to powering your inverter, there are a few alternative options to consider aside from lithium batteries. While lithium batteries have gained popularity due to their numerous advantages, they may not be the right choice for everyone. One alternative option is lead-acid batteries.

Can a solar inverter be used with a lithium battery?

Integrating a solar inverter with a lithium battery can take your renewable energy setup to the next level. This combination allows for better energy storage, improved efficiency, and greater resilience during power outages. LiFePO4 batteries are particularly well-suited for solar applications because of their thermal stability and long cycle life.

How do you connect a lithium battery to an inverter?

BMS Communication Link: Most lithium batteries come with a built-in BMS that can communicate with the inverter. Ensure that this link is properly established by connecting the BMS output to the corresponding input on the inverter.

Are all inverters compatible with all lithium batteries?

Not all inverters are compatible with all lithium batteries. Therefore, it is crucial to ensure that the inverter you choose is designed to work with the specific type of lithium battery you plan to use. Check Manufacturer



Specifications: Both the battery and inverter manufacturers typically provide a list of compatible products.

Can a lithium battery be used with a sine wave inverter?

Some examples include pure sine wave and modified sine wave inverters. These inverters may work better with lithium-ion batteries. Understanding your inverter type is crucial to avoid potential issues down the line. The first step in installing a lithium battery for inverter with an existing inverter is to assess your current setup.



The inverter can be connected to lithium batteries



How Inverters Work with Batteries: A Beginner's Complete Guide ...

First, identify the battery type. Lead-acid and lithium-ion batteries are common choices. Each type has advantages in terms of cost, lifespan, and efficiency. Next, install the ...

[WhatsApp](#)

[Do I Need a Special Inverter for a Lithium Battery?](#)

Yes, using a lithium battery often requires a special inverter designed to handle the specific voltage and charging characteristics of lithium technology. Unlike traditional lead-acid ...

[WhatsApp](#)



Understanding the Basics of Connecting Lithium Batteries to Inverters

Connecting a lithium battery to an inverter is crucial for converting the stored DC (Direct Current) energy into usable AC (Alternating Current) for household or industrial ...

[WhatsApp](#)



Importance of Compatibility Between Inverter and Lithium Battery

Inverters that are not designed to work with lithium batteries may overcharge or undercharge the battery, leading to premature degradation.



Ensuring compatibility means that ...

[WhatsApp](#)



[Do I need a special inverter for Lithium battery?](#)

You don't necessarily need a special inverter for a lithium battery, but compatibility is critical. Here are the important points to consider when deciding the correct answer. The ...

[WhatsApp](#)



Can I add batteries to a microinverter based solar system?

I'd like a home battery. Is 10kWh enough? Can I build my own house battery? Can I use my generator to fool the grid connected solar into working during a blackout? What inverter should ...

[WhatsApp](#)



Hybrid Inverter and Lithium Batteries: Setup Guide and Best ...

set up communication between lithium batteries and a hybrid inverter with our detailed step-by-step guide. Ensure optimal performance and longevity of your energy storage system by ...

[WhatsApp](#)





[Can Lithium Batteries Work With Any Type of Inverter?](#)

When setting up solar energy systems or home energy storage, a common question arises: Are lithium batteries compatible with all inverters? The short answer is no - proper ...

[WhatsApp](#)



Can deye 12kw hybrid inverter connect 2 different batteries ...

guys deye 12kw hybrid inverter has 2 battery port inputs. one above each other. i dont know can both be used and what is the purpose of this . nobody really explains this well. ...

[WhatsApp](#)

[Can I Connect Inverter to Lithium Battery?](#)

Yes, you can connect an inverter to a lithium battery. Lithium batteries, particularly Lithium Iron Phosphate (LiFePO4) batteries, are well-suited for use with inverters due to their ...

[WhatsApp](#)



Compatibility of Lithium-Ion Batteries with Existing Inverters

Learn how to seamlessly integrate lithium-ion batteries with existing inverters for efficient and reliable power solutions. Maximize energy storage with Invertek Energy.

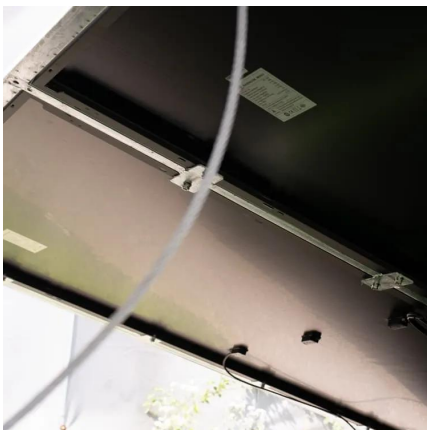
[WhatsApp](#)



[Do Lithium Batteries Need a Special Inverter?](#)

Lithium batteries, including lithium-ion batteries and lithium iron phosphate (LiFePO4) batteries, don't necessarily require a special inverter specifically designed for lithium batteries.

[WhatsApp](#)



[Can I charge my batteries with a generator and inverter](#)

My plan is to buy: 15kw inverter (3x 5kw inverter), 40kw Lithium Battery (4x 10kw batteries) and a 15kw power generator. So instead of my power generator working 24/7, can I connect my ...

[WhatsApp](#)

Contact Us

For catalog requests, pricing, or partnerships, please visit:
<https://www.straightta.co.za>