

The communication base station inverter does not stop





Overview

Why is a frequency inverter unable to stop at a numerical point?

There are several reasons for the situation where the frequency inverter is unable to stop at a numerical point. These reasons include the limitations imposed by the acceleration and deceleration time in the acceleration and deceleration process, and the need for the output frequency to reach a specified frequency.

What if the inverter does not detect cellular modem?

to the Monitoring Server
Modem Not Detected
If the inverter does not detect the cellular modem, it will no show as an available communications option. In the event this occurs, perform the following steps: Turn off the inverter by moving the P1/0 switch to the 0 (OFF) position and wait for VDC on the inverter to drop below 50V.

What are common error codes on inverters?

Modern inverters come equipped with digital displays that show error codes when something goes wrong. Here's how to address common error codes: Low Voltage Error: Indicates that the battery voltage is too low. Charge the battery and reset the inverter. Overload Error: Reduce the connected load to within the inverter's rated capacity.

Why is my inverter NOT working?

Overloading the inverter can cause it to shut down or not produce any power. Disconnect all loads, reset the inverter, and reconnect them one at a time. Inspect the Internal Components: Faulty internal components like capacitors, transistors, or resistors can lead to no power output.

What happens if an inverter malfunctions?

Inverters play a crucial role in many modern systems, converting DC power from sources like batteries or solar panels into AC power that can be used by



household appliances. However, when inverters malfunction, it can disrupt operations and cause significant inconvenience.

What should I do if my inverter is not charging properly?

Faulty Charging Circuit: A malfunctioning charging circuit can prevent the battery from charging properly, leading to quick drainage. Check the charging circuit and replace any defective components. **Check for Parasitic Loads:** Even when the inverter is off, some devices may still draw power.



The communication base station inverter does not stop



[How to solve Inverter & battery Communication issues](#)

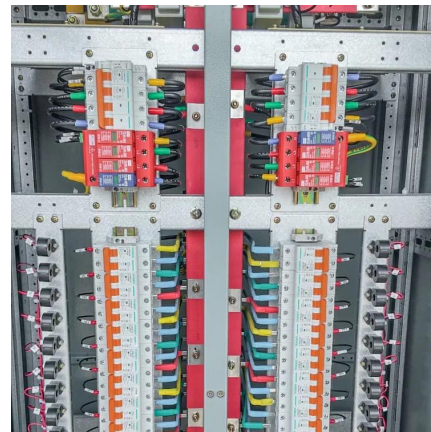
How to solve Inverter & battery Communication issues ? Explore practical tips on resolving communication issues between inverters and batteries, ensuring smooth and ...

[WhatsApp](#)

[System is producing but not communicating](#)

Your WIFI router has changed but the connection details have not been updated in the inverter/communications device. Of course, this only applies if your device is connected via WIFI.

[WhatsApp](#)



Power Optimizer and String Troubleshooting Guide - North ...

Power Optimizer Functionality SolarEdge Power Optimizers work with the PV modules and inverters on-site to help maximize production and improve production efficiency from the PV ...

[WhatsApp](#)

[Troubleshooting Inverter Communication Error with PLC](#)

Learn how to diagnose and resolve communication errors between an inverter and an external PLC, covering physical,



communication settings, network, protocol, firmware, diagnostics, ...

[WhatsApp](#)



How Do Inverters Communicate -- EASUN POWER Official Store

Protocols and Standards The adoption of communication protocols like Modbus, which is widely used for industrial equipment, allows inverters to interface seamlessly with a ...

[WhatsApp](#)

Contact Us

For catalog requests, pricing, or partnerships, please visit:
<https://www.straighta.co.za>