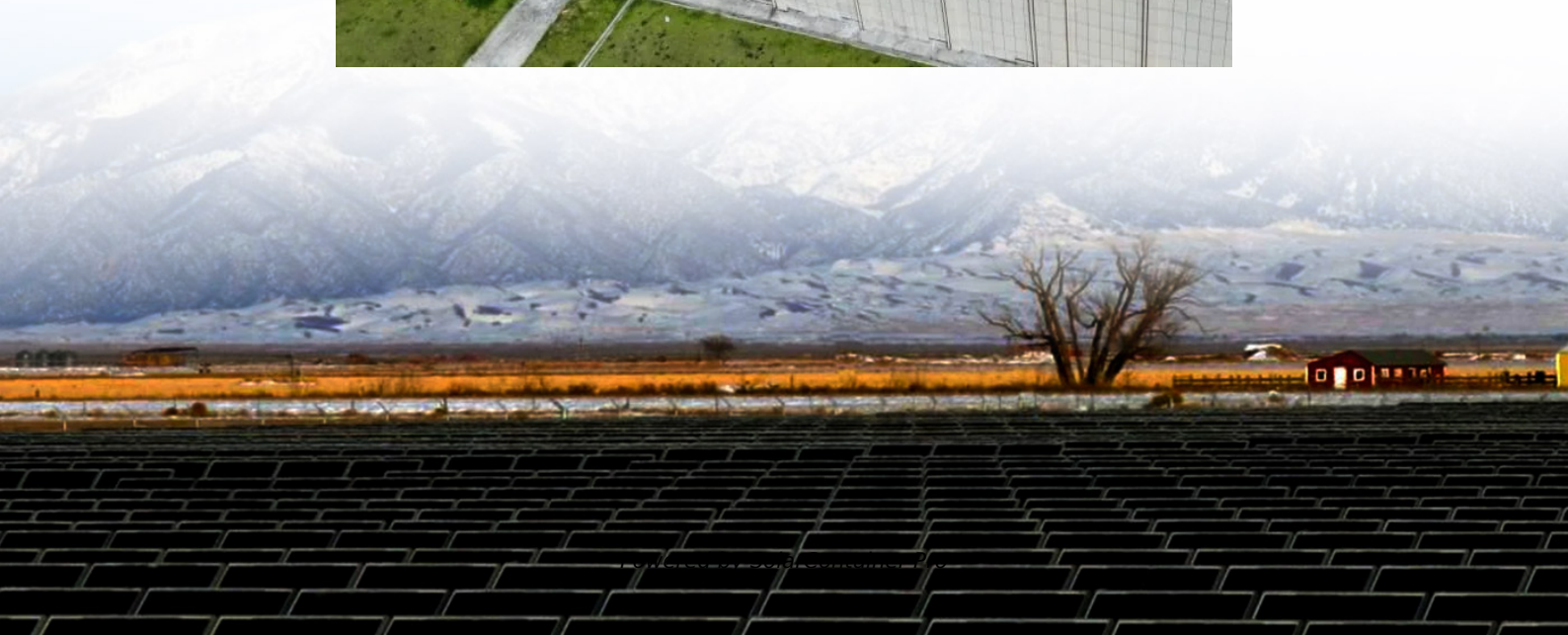


The battery in the battery cabinet shows low power





Overview

What does a “low battery” notification mean?

A “low battery” notification isn’t just a warning—it’s a reminder of our reliance on power. When that small red icon flashes, or your phone dings with a low battery alert, it’s easy to feel a pang of anxiety, knowing your device is about to lose its life. Low battery means that the device’s power level is reaching a critical point.

What does low battery mean?

When you see alerts like "battery low," "low battery," or "battery voltage low," it typically indicates that your device’s power is running out. This could be due to various factors, including battery wear, usage patterns, or technical issues with the device.

What causes low battery levels?

The causes of low battery levels can vary, but they are often related to the usage and age of the battery. Over time, batteries naturally degrade and lose their ability to hold a charge. Additionally, certain activities and settings on our devices can consume a significant amount of power, leading to a faster depletion of the battery.

What is the difference between a low battery and a dead battery?

A low battery level refers to a battery that is running out of power and needs to be recharged soon. On the other hand, a dead battery is one that has completely lost its charge and cannot be recharged. Energy efficiency plays a crucial role in maintaining a healthy battery level.

What are the warning signs of a critically low battery?

It is crucial to be aware of the warning signs indicating a critically low battery, such as a low battery level notification or the device not functioning properly. Ignoring a critically low battery can have several negative consequences.

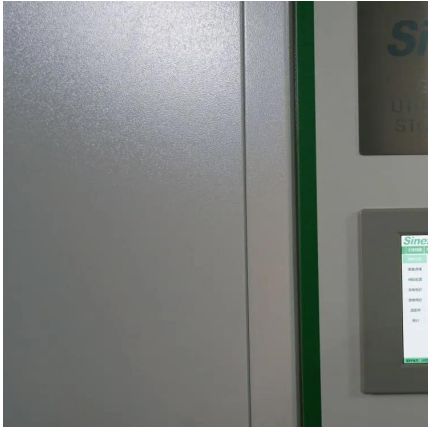


What does it mean if a battery is almost empty?

When the battery level of a device is almost empty, it is in a critically low energy state and is running out of power. The words “almost dead” are commonly used to describe this situation. The level of energy in a battery is closely related to the device’s ability to function.



The battery in the battery cabinet shows low power



Does Low Power Mode Ruin Your Battery? Effects On Battery ...

Low power mode conserves battery life by reducing CPU and GPU performance, lowering screen brightness, and limiting background activities. It does not ruin battery health. ...

[WhatsApp](#)

Understanding Low Battery Issues and How to Deal with Them

In case of low battery power, solutions may include testing individual cells, checking voltage contacts, or using heating or freezing techniques to reactivate the battery within safe limits.

[WhatsApp](#)



Why does the Windows battery report show that there is negative power

My Windows 10 laptop reported "no battery" this morning, and the Windows Battery report I generated reported a battery capacity of -1 mWh. After some charging, ...

[WhatsApp](#)

Does Low Power Mode Hurt Your Battery? Myths, Benefits, and ...

When Low Power Mode is activated, the device conserves energy significantly, allowing users to stay connected for longer periods. According to



Apple, activating Low Power Mode can ...

[WhatsApp](#)



Operations Manual ZincFive BC Series UPS Battery Cabinets

ZincFive BC Series UPS Battery Cabinet
Introduction The ZincFive BC Series UPS Battery Cabinet is comprised of ZincFive's Nickel-Zinc Batteries integrated into a battery cabinet with ...

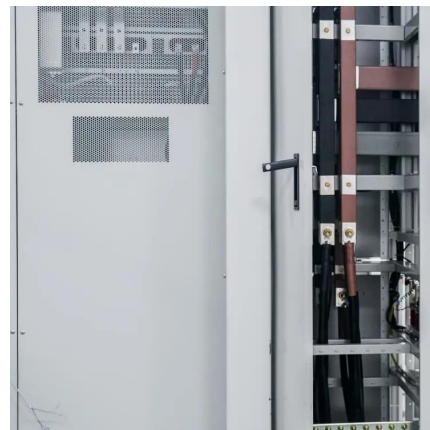
[WhatsApp](#)



How to Show Battery Percentage on Windows 10: A Simple Guide

How to Show Battery Percentage on Windows 10: A Simple Guide In the age of laptops and mobile devices, keeping an eye on your battery percentage is more important than ...

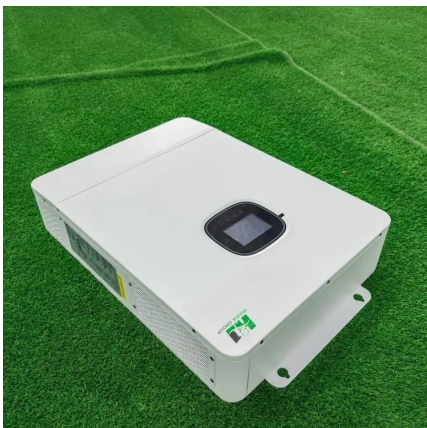
[WhatsApp](#)



[Car Battery Low Voltage: Causes, Symptoms, and Solutions](#)

Low voltage in a car battery occurs when the battery's charge drops below the normal range, typically below 12.4 volts. This can lead to starting issues, dim lights, and ...

[WhatsApp](#)





[\[Simple Guide\] How to Respond to Low Battery?](#)

When that small red icon flashes, or your phone dings with a low battery alert, it's easy to feel a pang of anxiety, knowing your device is about to lose its life. Low battery means ...

[WhatsApp](#)



powercfg /battery report shows "No Batteries are currently ...

My laptop has lost both it's battery icon and it's low battery warnings but the charger is seemingly still charging the battery properly to full capacity, when the charge light ...

[WhatsApp](#)

[Can a Battery Have Voltage but No Current?](#)

Can a battery with voltage but no current still power a device? No, a battery needs to provide both voltage and current to power a device. If it can't supply current, the device will ...

[WhatsApp](#)



Liebert® EXS External Battery Cabinet Installer/User Guide

This manual contains important instructions that should be followed during installation of your Vertiv™ Liebert® EXS Battery Cabinet and accessories. Read this manual thoroughly, paying ...

[WhatsApp](#)



[Low Battery Problems? Common Causes and Quick Solutions](#)

LiFePO₄ batteries show a " Low Battery " warning because of the low voltage of the cells. These low battery warnings in the LiFePO₄ batteries appear when the voltage of one or ...

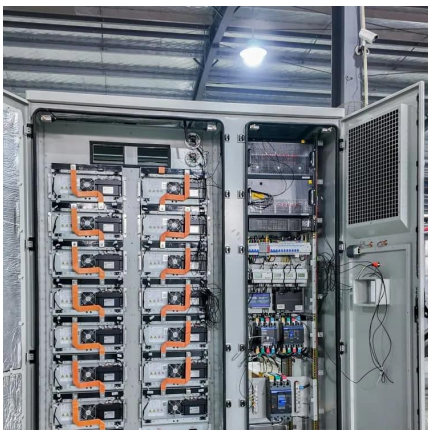
[WhatsApp](#)



Understanding the Causes and Consequences of Low Battery ...

A critically low battery level is an indication that the battery is running out of power and needs to be recharged as soon as possible. If the battery is left to reach this level, it may ...

[WhatsApp](#)



Contact Us

For catalog requests, pricing, or partnerships, please visit:
<https://www.straightta.co.za>