

# **Telecom base station battery cannot be charged**





## Overview

---

What makes a telecom battery pack compatible with a base station?

Compatibility and Installation Voltage Compatibility: 48V is the standard voltage for telecom base stations, so the battery pack's output voltage must align with base station equipment requirements. Modular Design: A modular structure simplifies installation, maintenance, and scalability.

Which battery is best for telecom base station backup power?

Among various battery technologies, Lithium Iron Phosphate (LiFePO<sub>4</sub>) batteries stand out as the ideal choice for telecom base station backup power due to their high safety, long lifespan, and excellent thermal stability.

What is a telecom battery?

Telecom batteries play a crucial role in powering equipment, supporting backup systems, and facilitating smooth operations. This comprehensive guide will delve into the types of telecom batteries, their applications, maintenance tips, and the latest advancements in battery technology. 1. Understanding Telecom Batteries 2.

How do you protect a telecom base station?

Backup power systems in telecom base stations often operate for extended periods, making thermal management critical. Key suggestions include: Cooling System: Install fans or heat sinks inside the battery pack to ensure efficient heat dissipation.

Why do data centers use Telecom batteries?

In data centers, telecom batteries provide backup power to servers and networking equipment. They ensure data integrity and availability during power outages. Cellular networks rely on telecom batteries to maintain service continuity.



## Why are Telecom batteries important?

Telecom batteries are crucial in emergency power systems, providing immediate backup when the main power supply fails. This is vital for maintaining communication during disasters or emergencies.

### 3. Key Features of Telecom Batteries

The capacity of telecom batteries is measured in amp-hours (Ah), indicating how much energy they can store.



## Telecom base station battery cannot be charged

---



### Telecom Base Station Backup Power Solution: Design Guide for ...

This guide outlines the design considerations for a 48V 100Ah LiFePO4 battery pack, highlighting its technical advantages, key design elements, and applications in telecom ...

[WhatsApp](#)

### What Are the Key Considerations for Telecom Batteries in Base ...

Which Battery Types Are Used in Telecom Base Stations? VRLA and lithium-ion dominate telecom base stations. VRLA batteries are cost-effective, maintenance-free, and ...

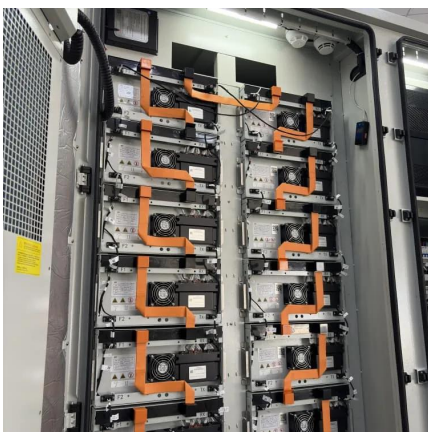
[WhatsApp](#)



### What Are the Key Considerations for Telecom Batteries in Base Stations?

Which Battery Types Are Used in Telecom Base Stations? VRLA and lithium-ion dominate telecom base stations. VRLA batteries are cost-effective, maintenance-free, and ...

[WhatsApp](#)



### [TELECOM BASE STATION BATTERY EVERYTHING YOU ...](#)

Base station battery pack power calculation All high voltage battery packs are made up from battery cells arranged in strings and modules. A





battery cell can be regarded as the smallest ...

[WhatsApp](#)



### 9 Sizing Mistakes That Cripple Telecom Battery Backup Uptime

Discover 9 critical sizing mistakes that compromise telecom battery backup uptime. Learn how to accurately size power systems for remote base stations and ensure ...

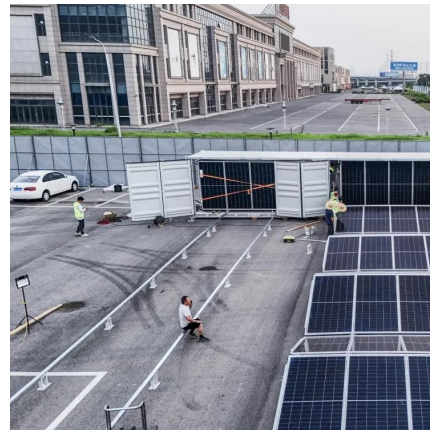
[WhatsApp](#)



### [What Are Telecom Lithium Batteries and Their Benefits?](#)

Check here. Telecom lithium batteries are advanced energy storage devices that utilize lithium-ion or lithium iron phosphate (LiFePO4) technologies. They are engineered to ...

[WhatsApp](#)



### [Telecom Base Stations - Zolair Energy Solutions Limited](#)

Power For Telecom Base Stations Zolair proudly spearheads the charge in a transformative green energy revolution, marked by our groundbreaking Zinc-Air Battery technology. This cutting ...

[WhatsApp](#)



## Telecom Base Station Battery Solutions: What You Need To Know

Telecom base station batteries are a type of backup power system for telecom cellsites. They provide continuous power to the site, which means you won't experience ...

[WhatsApp](#)



## [Maintenance Points for Telecom Base Station Batteries](#)

(3) Valve-regulated sealed lead-acid batteries do not need to be initially charged before use, but supplementary charging is required. Supplementary charging voltage should be carried out ...

[WhatsApp](#)

## [Can base station batteries be used for energy storage](#)

Telecom batteries play a vital role in storing excess energy generated by renewable energy sources, ensuring that telecom base stations are continuously powered even in the absence of ...

[WhatsApp](#)



## Communication base station battery pack replacement tutorial

48V 100Ah Telecom Base Station Battery Model: SPF48V100-SM. 48V100Ah lithium iron phosphate (LiFePO4) battery pack for communication base station, UPS, solar systems etc. ...

[WhatsApp](#)



### Understanding Backup Battery Requirements for Telecom Base Stations

Telecom base stations require reliable backup power to ensure uninterrupted communication services. Selecting the right backup battery is crucial for network stability and ...

[WhatsApp](#)



### [48V 50Ah LiFePO<sub>4</sub> Battery \(Telecom Base Station\)](#)

Battery housing: Cold-rolled steel plate + powder-coated housing grade Lithium battery protection: short-circuit protection, overcharge protection, overdischarge protection, overcurrent ...

[WhatsApp](#)



### (PDF) Dispatching strategy of base station backup power supply

With the mass construction of 5G base stations, the backup batteries of base stations remain idle for most of the time. It is necessary to explore these massive 5G base ...

[WhatsApp](#)





## Contact Us

---

For catalog requests, pricing, or partnerships, please visit:  
<https://www.straighta.co.za>