

Substation 10kV power generation





Overview

What is a 10 kV full buried box-type substation?

In this paper, a type of 10 kV full buried box-type substation, which consists of buried box, high-voltage power supply system, low-voltage distribution system, transformer and intelligent control system is designed. Above all, the overall design and the key equipment of the full-buried substation are described.

What voltage does a primary substation use?

Usually they use 110 kV or 220 kV voltage level. Generally, a primary substation includes a high-voltage busbar system, medium-voltage busbar system, auxiliary system, and one or several main transformers. In order to provide operational flexibility and to have more than one supply alternative, there might be several incoming radial lines.

What are the different types of power substations?

Depending on the purpose served, power substations might be classified as:
Step-up substations – This type of substations steps up the generated voltage to the voltage level, which is used to transmit the electric power. Primary substations – These substations receive the electric power, which is transmitted by three-phase overhead system.

What is a step-up transmission substation?

A step-up transmission substation receives electric power from a nearby generating facility and uses a large power transformer to increase the voltage for transmission to distant locations. A transmission bus is used to distribute electric power to one or more transmission lines.

Are all substations included in a power supply scheme?

Not all power supply schemes may include all these types of substations, and some of substations could be neglected. Primary substations in a network are



used to step down a high voltage level in order to supply secondary substations by lower voltage. Usually they use 110 kV or 220 kV voltage level.

How many 230kV lines does a substation have?

The substation has four 230kV incoming lines and eight 60kV outgoing lines. As seen in Figure 4.7, the layout includes two switchyards: 230kV and 69 kV. The combinations of circuit breakers and disconnecting switches in both switchyards are replaced by disconnecting circuit breakers of the same rating.



Substation 10kV power generation



Design and electrical calculations for 110 (220)/35/10 kV power substation

Generally, a primary substation includes a high-voltage busbar system, medium-voltage busbar system, auxiliary system, and one or several main transformers. In order to ...

[WhatsApp](#)

eTool : Electric Power Generation, Transmission, and Distribution

A step-up transmission substation receives electric power from a nearby generating facility and uses a large power transformer to increase the voltage for transmission to distant locations.

[WhatsApp](#)



The 21st Century Substation Design

In this approach, a new layout of substation equipment that illustrates innovative options for "fusion" between power apparatus and infrastructure for monitoring, control and protection is ...

[WhatsApp](#)

[SECTION 9: ELECTRICAL POWER DISTRIBUTION](#)

Circuit protection Surge arresters Circuit breakers Substation bus feeds the primary distribution network Feeders leave the substation to distribute power into the service area in one of



three ...

[WhatsApp](#)



Hv/Mv/LV 10kv 1000kVA New-Energy Power Generation Substation ...

Meanwhile, the box-type converting stations on site installation is simple, rapid, equipment maintenance simple power substation, without special, especially it can further load centers, to ...

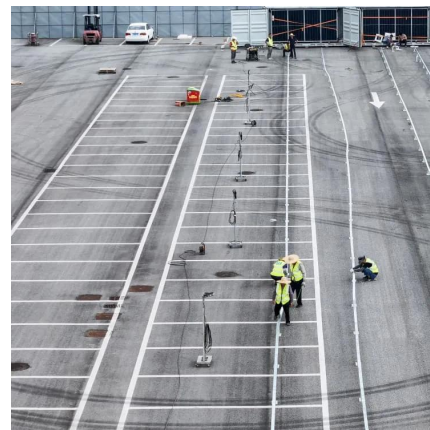
[WhatsApp](#)



10kv Mobile Substation Mv/LV Compact Prefabricated Complete Substations

10kv Mobile Substation Mv/LV Compact Prefabricated Complete Substations, Find Details and Price about Compact Secondary Substations New-Energy Power Generation Substation from ...

[WhatsApp](#)



High-Voltage Electric Power Substation Configuration ...

This Infrastructure System Overview details the three types of electric power substations and the functions they perform as part of the bulk power system (BPS). A broad overview of the BPS, ...

[WhatsApp](#)

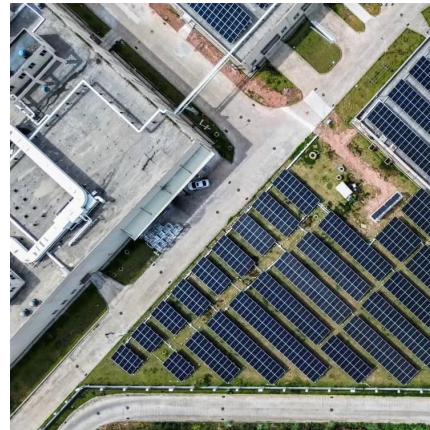




[\(PDF\) Electrical design of 10kV workshop substation](#)

The main contents of the project include load calculation, selection of substation main transformers, design of substation feeders, short-circuit current calculation, power factor ...

[WhatsApp](#)



[Solid State Power Substation Technology Roadmap](#)

Design and development of a flexible, standardized power electronic converter that can be applied across the full range of grid applications and configurations can enable the economy of scale ...

[WhatsApp](#)

How It Works: Electric Transmission & Distribution and ...

Substations serve as critical nodes connecting generation, transmission, and distribution networks. While substations are used for several distinct system functions, most utilize electric ...

[WhatsApp](#)



2500~3500kVA 10kV Compact Substation Power Transformer for ...

2500~3500kVA 10kV Compact Substation Power Transformer for New Energy Generation, Find Details and Price about Compact substation 3500kVA Transformer from 2500~3500kVA 10kV ...

[WhatsApp](#)



Construction of 10-110 kV power grids. VOLTAGE

VOLTAGE Group specializes in the design, construction, commissioning, and maintenance of medium and high-voltage power substations and transmission lines (10 kV to 130 kV). We ...

[WhatsApp](#)



Design of 10kv full buried box-type substation

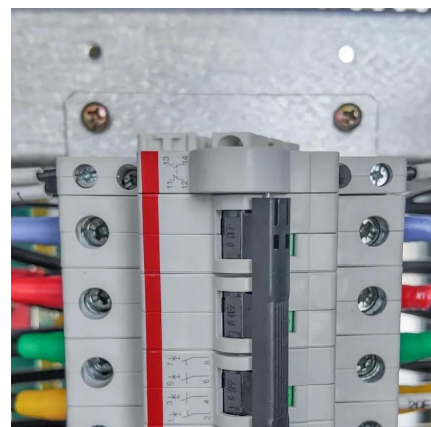
In this paper, a type of 10 kV full buried box-type substation, which consists of buried box, high-voltage power supply system, low-voltage distribution system, transformer and intelligent ...

[WhatsApp](#)

Lower Mattagami - 115 kV, 10 MVA Construction Power Substation

OneLine Engineering provided complete electrical engineering and design services for a 10 MVA, 115 kV substation for the supply of construction and camp power, including the interconnection ...

[WhatsApp](#)





Different Types of Substations: Exploring the Backbone of the

GET IN TOUCH The ultimate solution for reliable power control! call us at 276-285-3841

Conclusion: In conclusion, substations are the unsung heroes of the modern ...

[WhatsApp](#)

Contact Us

For catalog requests, pricing, or partnerships, please visit:
<https://www.straighta.co.za>