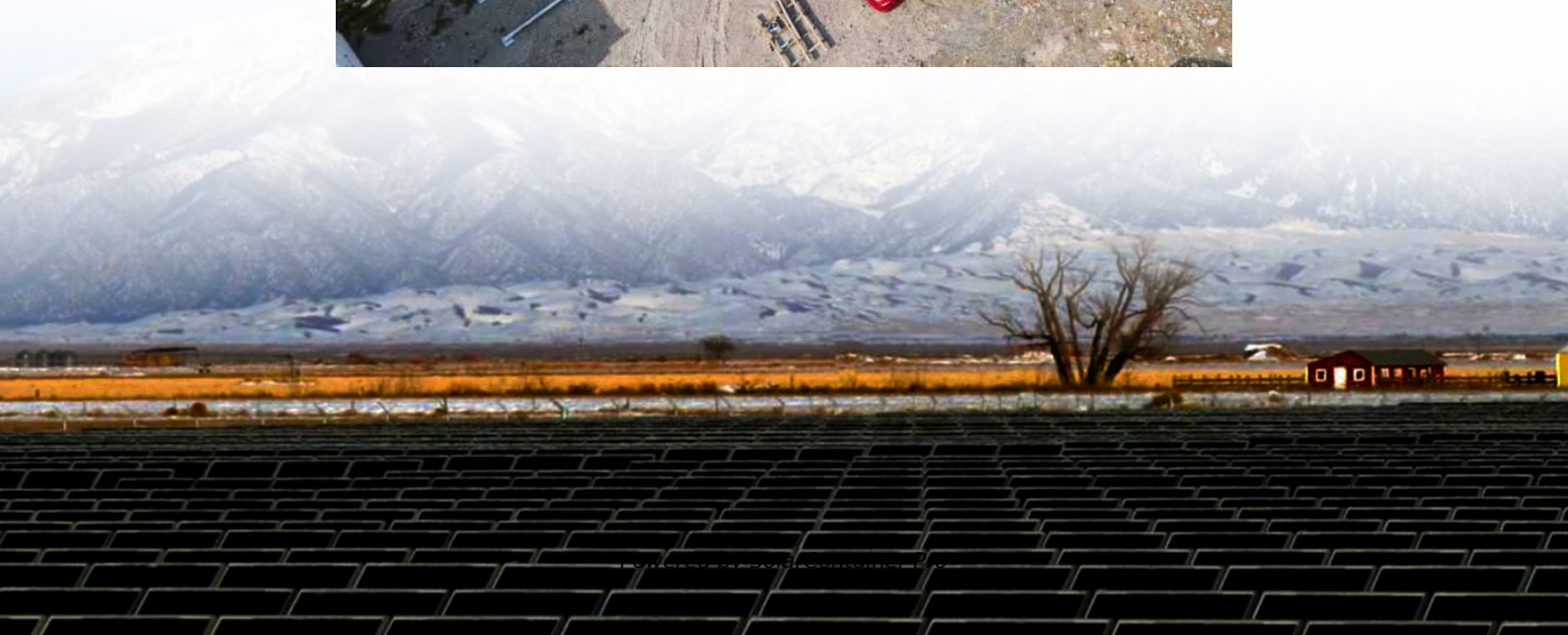


Sophia Communication Base Station Cell Tower





Overview

Why are base stations important in cellular communication?

Base stations are important in the cellular communication as it facilitate seamless communication between mobile devices and the network communication. The demand for efficient data transmission are increased as we are advancing towards new technologies such as 5G and other data intensive applications.

What is a cell tower in a cellular telephone network?

Cell towers in cellular telephone networks are known as base stations. When a person makes or receives a call using their cell phone, each of these devices connects to a specific cell tower which in turn connects the handset to a wired type public switched telephone network (PSTN), among other potential participants.

Who owns cell sites & base stations?

The cell sites and base stations are owned by mobile network operators such as Vodafone, T-Mobile, Rogers, AT&T, Verizon etc. The base stations represent the radio part of the mobile network, and one base station typically contains multiple cells which operate on specific radio frequencies.

What is a base station in a mobile network?

The base stations represent the radio part of the mobile network, and one base station typically contains multiple cells which operate on specific radio frequencies. The radio network is what connects a mobile phone to the mobile network.

What is a GSM base station?

In the second generation of mobile networks powered by GSM technology, the base stations are called Base Transceiver Stations or BTS for short. The word transceiver refers to the fact that the base station is doing a dual job of being



a transmitter and a receiver, hence the term trans + ceiver.



Sophia Communication Base Station Cell Tower



What Is Base Station in Mobile Communication? - The Heart of ...

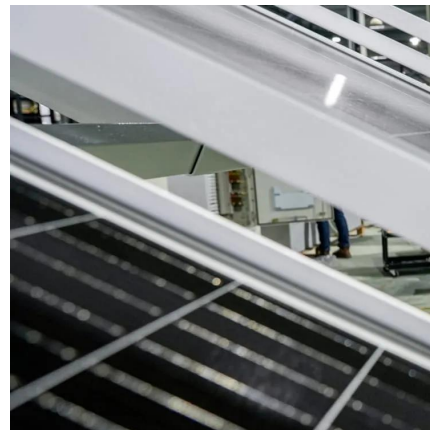
The primary function of a base station is to transmit and receive radio signals to and from mobile devices, enabling voice and data services. Base stations are typically ...

[WhatsApp](#)

[Cooling for Mobile Base Stations and Cell Towers](#)

Application Overview Bulky compressor-based air conditioners have traditionally been used for removing heat generated by communications equipment installed in base station and cell ...

[WhatsApp](#)



[Cell sites and cell towers in a mobile cellular network](#)

In technical terms, the cell towers are called radio base stations or base stations. The radio units in the base station emit mobile signals (radio waves) at various frequencies ...

[WhatsApp](#)

Reaching New Heights: Uncovering the Mysterious World of Cellular Towers

The Anatomy of a Cellular Tower Cellular towers, also known as cell sites or base transceiver stations (BTS), are tall structures designed to



facilitate wireless communication ...

[WhatsApp](#)



[Understanding Macro Towers: The Backbone of Wireless ...](#)

Macro towers, also known as cell towers or base stations, are tall structures designed to support antennas and other telecommunications equipment. These towers are crucial for enabling ...

[WhatsApp](#)



[Telecommunications towers in the United Kingdom](#)

Telecommunications towers in the United Kingdom are operated mainly by Arqiva. [1] Arqiva operates the transmitters for UK terrestrial TV and most radio broadcasting, both analogue ...

[WhatsApp](#)



UPDATED FOR 2024: Different Types of Telecom Towers: Which ...

Self-Support Towers Self-support towers offer the most possibilities compared to other types of telecom towers and are considered appropriate for nearly all wireless ...

[WhatsApp](#)





What Is The Difference Between A Cell And A Sector, Carrier

Jul 27, 2023 Cell, sector, carrier, and carrier frequency are all concepts related to mobile communication base stations. Let's start with the base station. The base station is an ...

[WhatsApp](#)



Find Your Nearest Cell Tower Quickly and Painlessly

The most simple and easy-to-use cell tower map available is our Cell Tower Finder. Simply enter your address or click the "Find my Location" button and select your carrier ...

[WhatsApp](#)

Everything You Need to Know About Cell Towers , Bug Tussel

A cell site is composed of the antenna and ground equipment and other equipment such as transmitters, receivers, GPS, backup power sources, base transceiver stations; ...

[WhatsApp](#)



Contact Us

For catalog requests, pricing, or partnerships, please visit:
<https://www.straighta.co.za>