

Solar panel top shading





Overview

What is solar panel shading?

Solar shading is simply any shadow created by any physical obstruction which then falls onto one or more installed solar panels. Common causes of shading include nearby trees, buildings and construction, debris like leaves or dirt, and of course weather-related factors (i.e. cloud cover).

Does shading affect solar power output?

Some studies reveal that shading on just one solar cell in a panel can reduce the power output of the entire panel by 50-80%, being is a considerable figure. On panel level, shading induces not only performance decrease, but hotspot effect that can potentially pose severe results.

Is shade bad for solar panels?

Shade is the enemy of solar panels. If you have an off-grid homestead, RV, van, or even a sailboat you could significantly reduce the power output of your panels. In this article, I'm going to explain how you can remedy shading on your solar panels. What's so bad about shade on solar panels?

.

Is solar panel shading a problem?

Solar panel shading is not an issue that you can solve, if the shading is there, power losses are going to be there. However, in this section, I will talk about a few solutions that can help you mitigate these losses. To simplify and to avoid confusion, I will discuss solutions for off-grid and grid-tie systems separately.

How can solar panels reduce shading?

Based on the findings from the shading analysis, develop and implement solutions to mitigate shading effects. This could include adjusting the orientation or tilt of solar panels to minimize shading, relocating panels to less



affected areas, or even trimming nearby vegetation to reduce shadowing.

What is the difference between a series and a shaded solar panel?

The system is reduced to one working solar panel. Compared to a series setup, where the bypass diodes had to activate, there are no voltage drops here and the output power is slightly higher. Please note that if the shading is hard enough to reduce the voltage of the shaded panel, it will start consuming power from the unshaded panel.



Solar panel top shading



[Shading Analysis In Solar Power Plants , Amplus](#)

Shading analysis is a very crucial step in finalizing panel locations in distributed Photo Voltaic (PV) solar installation. The extent of the rooftop area required by a solar PV plant is a factor of ...

[WhatsApp](#)

Shading Effect: How to Mitigate + Panel Products with Less Impacts

On panel level, shading induces not only performance decrease, but hotspot effect that can potentially pose severe results. As one principal factor in producing hotspot effect, ...

[WhatsApp](#)



[Game-Changer Solar Panels That Work in the Shade](#)

While shading can pose challenges to solar panel efficiency, innovative solutions like microinverters and power optimizers are paving the way for improved performance even in ...

[WhatsApp](#)



Shading Solar Panels Series or Parallel , Clever Solar Power

Shade is the enemy of solar panels. If you have an off-grid homestead, RV, van, or even a sailboat you could significantly reduce the power



output of your panels. In this article, ...

[WhatsApp](#)



[Best Solar Panel Shading Solutions for High Performance](#)

This post explores several options for shading solar panels and looks at both their usefulness and efficacy. It also reviews the best solutions for managing solar panels in shaded ...

[WhatsApp](#)



[Solar Panel Shading Analysis: A Detailed Guide](#)

Solar panel shading analysis refers to the evaluation of shadows on solar panels to determine how shading affects energy production. This process involves identifying potential ...

[WhatsApp](#)



Do solar panels work in the shade? A complete guide to solar panel

In this article, I will talk about the relation between solar power production and sunlight conditions, the effect of shading on a solar panel, a string of panels, and on multiples ...

[WhatsApp](#)

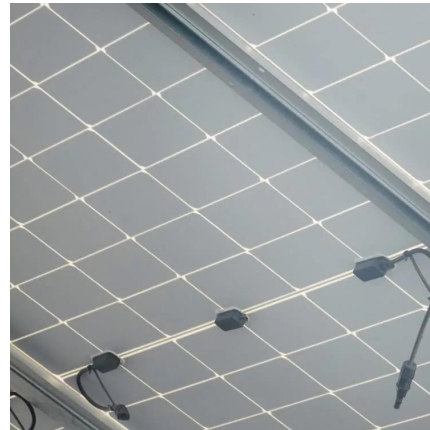




7 Best Solar Panels for Partial Shade Areas That Pros Swear By

Discover 7 top solar panels that excel in partial shade, featuring advanced tech like bypass diodes & microinverters for maximum energy output. Shaded rooftops don't have to kill your solar ...

[WhatsApp](#)



Shading effect and energy-saving potential of rooftop photovoltaic ...

Rooftop photovoltaic panels can serve as external shading devices on buildings, effectively reducing indoor heat gain caused by sunlight. This paper uses a numerical model to ...

[WhatsApp](#)



Renogy 200W ShadowFlux Anti-Shading N-Type Solar Panel

The Renogy 200W ShadowFlux Solar Panel is a revolutionary off-grid power solution. It is 7% smaller and 10% lighter than traditional rigid solar panels. Featuring N-Type solar cells and ...

[WhatsApp](#)



Solar Panel Shading: All You Should Know to Minimize Its Impacts

However, there are ways to tackle this power loss to ensure maximum power generation and savings. To help you reduce the shading effect, we will highlight the types of shades and ...

[WhatsApp](#)



Contact Us

For catalog requests, pricing, or partnerships, please visit:
<https://www.straighta.co.za>