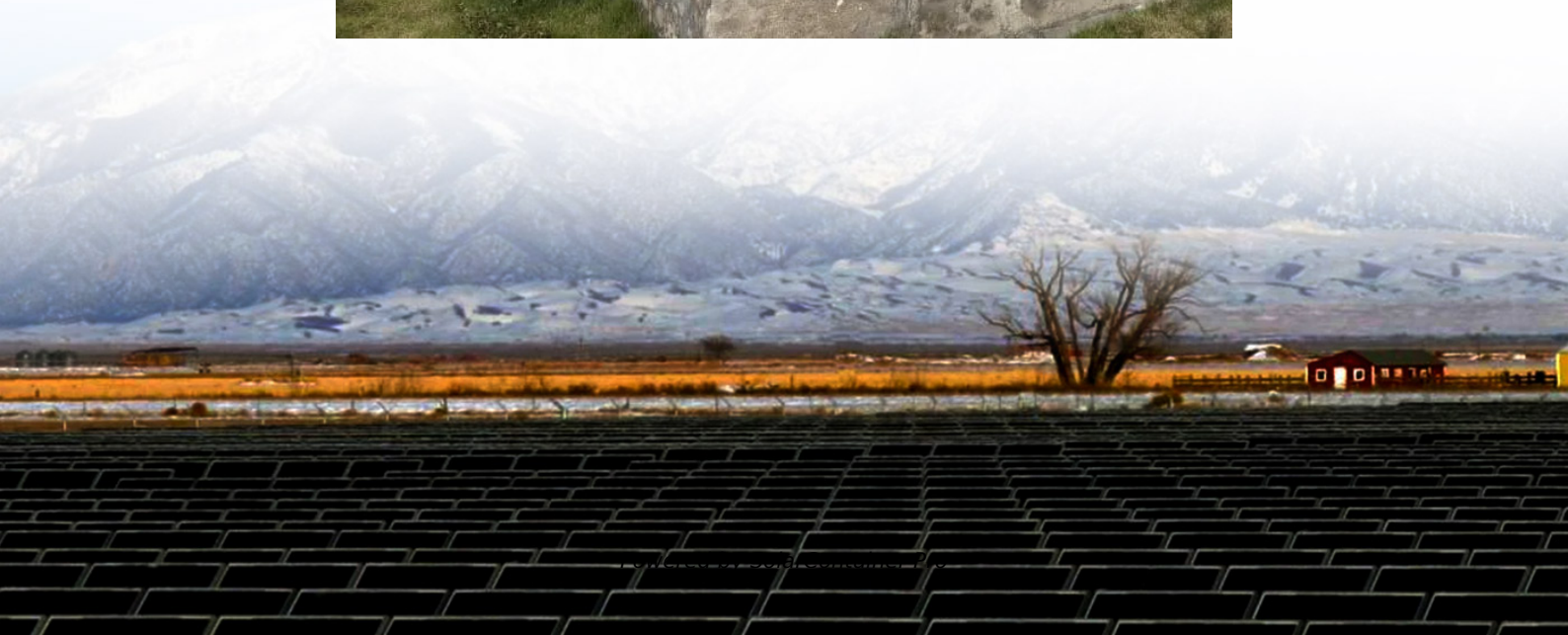


# Solar panel surface





## Overview

---

How much surface area do solar panels need?

The required surface area depends on the number of panels, their wattage, and physical dimensions. Roof orientation, shading, and available space also play significant roles. How do I assess my roof's suitability for solar panels?

.

What factors affect solar panel sizing?

Installing solar panels is a significant investment, and accurately calculating the surface area required for installation is crucial for optimizing energy production and maximizing savings. This guide will walk you through the factors influencing solar panel sizing, including energy consumption, panel wattage, roof orientation, and shading.

How do solar panels work?

Typical solar panels today are comprised of either 60 or 72 of these cells connected together. From there, the electricity travels away from the panel, toward other parts of a solar energy system such as battery storage or an AC/DC inverter. An anti-reflective film is applied to the top of each solar cell.

How do I choose a roof for solar panels?

Roof Dimensions: Measure the length and width of the roof sections where you plan to install solar panels. Usable Roof Area: Consider only the usable area that is free from obstructions like chimneys, vents, or skylights.

How many Watts Does a solar panel use?

We know the required Total Output Power is 1000 Watts (10 panels x 100 Watts), the Solar Irradiance for a surface perpendicular to the sun's rays at sea level on a clear day is about 1000 Watt/m<sup>2</sup> and the Conversion Efficiency is 18%. Plugging these number in the above equation we get: 1000 Watts =



Total Area x 1000 Watts/m<sup>2</sup> x 0.18 or.

Where should solar panels be placed?

Avoid Obstructions: Place panels in areas with the least shading and best sun exposure. Group Panels Effectively: Keep panels grouped together to minimize wiring costs and losses. Ideal Placement: Group panels on the south-facing roof section, away from any potential shading sources like trees or neighboring buildings.



## Solar panel surface

---



### Deep Learning-Based Dust Detection on Solar Panels: A Low ...

The world is shifting towards renewable energy sources due to the harmful effects of fossils fuel-based power generation in the form of global warming and climate change. When it ...

[WhatsApp](#)

### [Solar Cell Surface royalty-free images](#)

The upper surface of photovoltaic or solar cell panel which is wet with water and soap bubbles during washing and cleaning to optimize the use of the solar panel, in motion, soft and ...

[WhatsApp](#)



### How to calculate the surface and the profitability of solar panels?

In this ultra-practical guide, we'll help you estimate the surface area of solar panels you'll need and calculate the profitability of your investment. You'll see, it's simple and quite ...

[WhatsApp](#)



### How to calculate the surface and the profitability of solar panels?

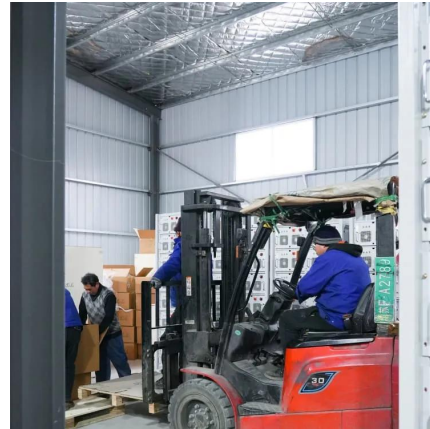
Calculator for the power per area or area per power of a photovoltaic system and of solar modules. You can enter the size of the modules





and click from top to ...

[WhatsApp](#)



[What is the surface of a solar panel? , NenPower](#)

Finally, the solar panel surface is designed to minimize reflection and maximize light absorption. The effectiveness of a solar panel greatly relies on not only the materials ...

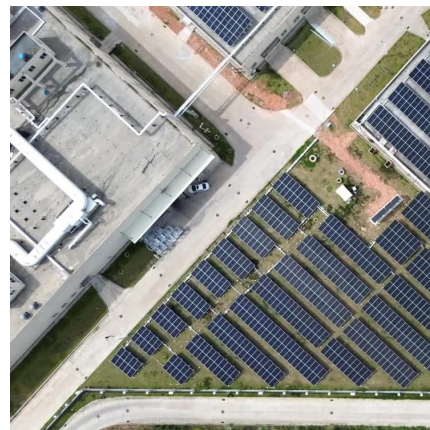
[WhatsApp](#)



## A Guide on Calculating Area Required for Solar Panel Installation

Once you have estimated the number and size of solar panels you need, you have to determine the area required on your rooftop, backyard, or garden to install solar systems ...

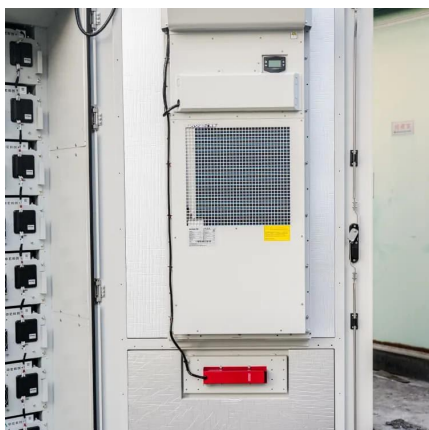
[WhatsApp](#)



## The Anatomy of a Solar Cell: Constructing PV Panels Layer by ...

Discover the remarkable science behind photovoltaic (PV) cells, the building blocks of solar energy. In this comprehensive article, we delve into the intricate process of PV ...

[WhatsApp](#)





### [What Are Solar Panels Made Of and How Are They Made?](#)

Solar power has entered the mainstream as the world's cheapest energy source, leaving many people wondering how solar photovoltaic cells can be efficient and inexpensive ...

[WhatsApp](#)



### [What is the area of a solar panel? -](#)

The most common size for a solar panel in the UK is around 1.6m<sup>2</sup>. However, there are larger panels available that can cover up to 2m<sup>2</sup> of surface area. The area of the solar ...

[WhatsApp](#)

### [Solar Panel Pump for Wells or Surface Water](#)

Solar panels for pumps are no different. Today, solar panel power is being used more than ever before for wells and other surface pump applications. There are several reasons why more of ...

[WhatsApp](#)



### [An active self-cleaning surface system for photovoltaic](#)

The purpose of this work is to develop an active self-cleaning system that removes contaminants from a solar module surface by means of an automatic, water-saving, and labor ...

[WhatsApp](#)



## How to Calculate the Surface Area Required by Solar Panels

But wait, are you sure you have enough space in your garden or your backyard or your rooftop to install the solar panels? How can you do a rough estimate of the area required ...

[WhatsApp](#)



## Laser-induced texturing: A sustainable approach to self-cleaning

Specifically addressing laser surface texturing for solar self-cleaning applications. This research gathers current information to highlight the remarkable potential of laser ...

[WhatsApp](#)

## Estimation of solar radiation on PV panel surface with optimum tilt

The amount of solar energy incidence on a photovoltaic (PV) panel depends on the PV tilt angles with respect to the horizon. It is thus crucial to investigate the optimum tilt angles ...

[WhatsApp](#)





## Contact Us

---

For catalog requests, pricing, or partnerships, please visit:  
<https://www.straighta.co.za>