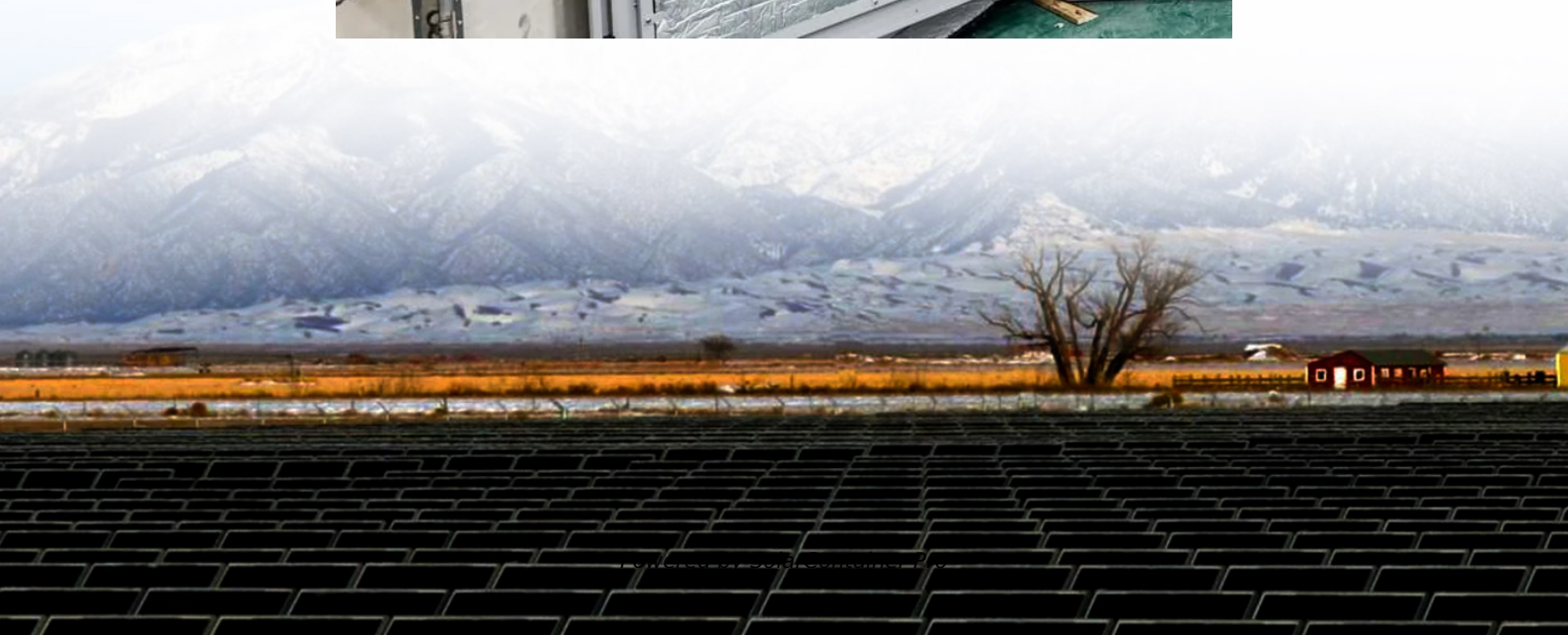


Solar panel area per kilowatt





Overview

How many square meters of space is required per kw solar panel?

The area required for each kilowatt (kW) solar panel system is approximately 5 to 10 square meters, depending on the panel efficiency and wattage. 1. How many square meters is a kilowatt solar panel system?

The area required for each kilowatt (kW) solar panel system is approximately 5 to 10 square meters, depending on the panel efficiency and wattage. 1. The effici.

How much space does a kilowatt solar panel system need?

The area required for each kilowatt (kW) solar panel system is approximately 5 to 10 square meters, depending on the panel efficiency and wattage. 1. The efficiency of the solar panels influences the space needed significantly, with higher efficiency panels requiring less area per unit of power generated. 2.

How much space does a 1 KW solar system take up?

On average, a 1 kW system requires 80-100 square feet (7.5 to 9.5 square meters). High-efficiency panels take up less space but may come at a higher upfront cost. Factors like roof shape, tilt, and panel spacing affect the total area needed.

How to calculate total area required for solar panel installation?

Formulas for Calculating Total Area Required for Solar Panel Installation The fundamental equation for determining the total area required involves calculating the area occupied by the panels and the additional space for structural and operational needs. Core Formula: Where: Step 1: Calculate Number of Panels N .

How many Watts Does a solar panel use?

We know the required Total Output Power is 1000 Watts (10 panels x 100



Watts), the Solar Irradiance for a surface perpendicular to the sun's rays at sea level on a clear day is about 1000 Watt/m² and the Conversion Efficiency is 18%. Plugging these number in the above equation we get: 1000 Watts = Total Area x 1000 Watts/m² x 0.18 or.

How many square feet does a home solar panel occupy?

A typical home solar panel is about 3 feet wide by 5.5 feet long, occupying an area of roughly 17.5 square feet (sq ft). On average, the amount of required roof space for a set of home solar panels is between 300 sq ft and 500 sq ft total.



Solar panel area per kilowatt



How to Calculate the Surface Area Required by Solar Panels

How can you do a rough estimate of the area required by the solar panels? Here is a quick and easy way to go about it. Lets assume that you want to install 10 solar panels rated ...

[WhatsApp](#)

[Solar Panels: How Many Sq Ft Do You REALLY Need?](#)

Hopefully, you've got a clearer picture of what goes into figuring out the ****solar panels square feet per kilowatt**** you'll need. Every roof and every energy need is a little ...

[WhatsApp](#)



A Guide on Calculating Area Required for Solar Panel Installation

According to the thumb rule, a 1 kW solar system in India can produce around 4 units of power a day. So, in a month, a 1 kW solar system can produce 120 units (4 units per ...

[WhatsApp](#)

[Calculate Rooftop Area for Solar Panel Installation](#)

In conclusion, Raj's House will require a Solar Plant of 3 kW comprising 9 Solar Panels of 330 Watts each. Find out the total Rooftop Area



Required to install these Solar Panels.

[WhatsApp](#)



[How Much Area Required for 1kW Solar Plant?](#)

To get a 1 kW (1000 watts) system, you need a combination of panels, which have equal in common what's or more than 1000 watts. Modern solar panels usually range from 300 watts to ...

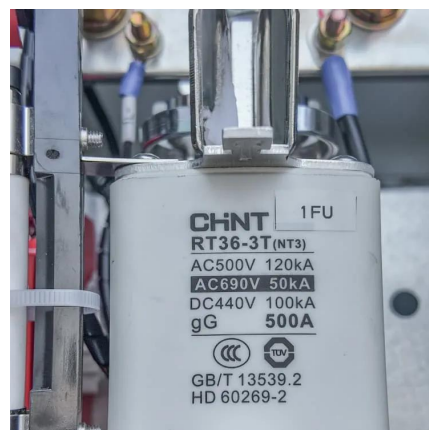
[WhatsApp](#)



[How much area does solar energy require per kilowatt?](#)

1. The area required for solar energy generation per kilowatt varies widely, influenced by factors such as technology type, efficiency, location, and climatic conditions.2.

[WhatsApp](#)



How many square meters of space is required per kw solar panel?

Typical solar panels range from 250W to 400W, translating to an area of about 1.6 to 2.2 square meters per panel, leading to a total space requirement of around 5 to 10 square ...

[WhatsApp](#)

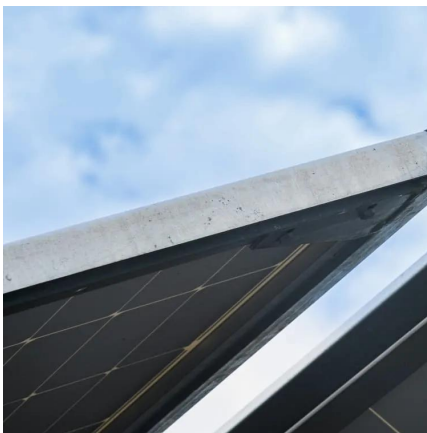




[Calculate Solar Panel kWp & KWh \(KWh Vs. kWp ± Meanings\)](#)

Put simply, kWp is the peak power capability of a solar panel or solar system. The manufacturer gives all solar panels a kWp rating, which indicates the amount of energy a ...

[WhatsApp](#)



How to Calculate the Output of a Solar Panel (with Examples and ...

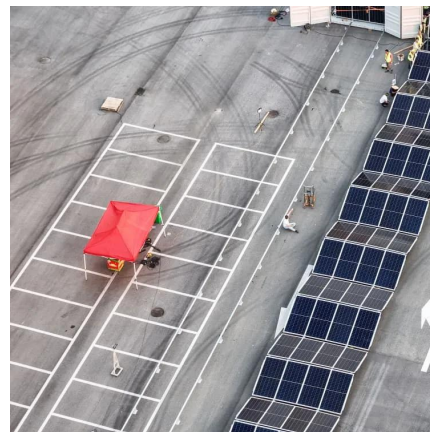
Solar panels are a great way to generate clean energy and save on electricity bills. But how much energy does a solar panel actually produce? In this guide, we'll walk you ...

[WhatsApp](#)

[Solar Panels: How Many Sq Ft Do You REALLY Need?](#)

High-efficiency panels might require 50-75 sq ft per kW, while standard efficiency panels could require 75-100 sq ft per kW. Sunlight Availability (Solar Irradiance): Regions with ...

[WhatsApp](#)



Contact Us

For catalog requests, pricing, or partnerships, please visit:
<https://www.straighta.co.za>