

Solar charging can be connected to an inverter





Overview

How do I connect a solar charge controller to an inverter?

To connect a solar charge controller with an inverter, you will need to first connect the solar panels to the charge controller, which regulates the power coming in. Then, connect the charge controller to the battery bank, allowing it to store power.

Can a solar inverter charge a battery?

Yes, you can charge a battery while running load or connected to the inverter but make sure that the load wattage should be less than what the solar panels are producing or you'll not be able to charge the battery.

Can I plug a power inverter directly to a charge controller?

Do NOT plug a power inverter directly to a charge controller. Charge controllers need a battery for reference to control the solar panel's input. First, you will need to connect a battery to your charge controller and then connect a power inverter to your battery.

Is it safe to charge a battery while the inverter is connected?

in short, yes it is safe to charge your battery while the inverter is connected. but the only thing to keep in mind is that the load connected with the inverter should be even to the input of DC power to the battery from the solar panels.

Can a solar panel charge a battery?

No, you can charge a battery via electric power if you are on the grid. A small battery can be powered up by a charger as well. The advantage of a solar panel is you can charge the battery without overheating, provided you have a working charge controller. Should I Use Lithium/AGM/Lead Acid Battery with an Inverter?

.



Can an inverter connect to a PWM charge controller?

Connecting an inverter directly to a PWM charge controller would be unregulated if it is allowed. Charge controllers require connecting to a battery before joining a solar panel to the controller because it needs a battery reference for the voltage. A battery is necessary to protect the controller's voltage regulator.



Solar charging can be connected to an inverter



Can You Use A Noco 10 Battery Charger While Connected To An Inverter?

1 day ago· Yes, you can use a NOCO 10 battery charger while connected to an inverter--but with critical precautions. This setup is common for RVs, boats, and off-grid power systems. Many ...

[WhatsApp](#)

Charging batteries with both an inverter and solar panels

To gain full voting privileges, I have an inverter, a battery bank, a PWM solar controller, and some solar panels. The inverter also supports charging the batteries from the ...

[WhatsApp](#)



Charging Battery While Connected To Inverter (Explained!)

Yes, you can charge a battery while running load or connected to the inverter but make sure that the load wattage should be less than what the solar panels are producing or ...

[WhatsApp](#)



Charging LifePo4 battery while still connected to my 12v Inverter ?

Hi Not wanting to damage my new Renogy 2000 watt Inverter. Is it ok or safe to charge my LifePo4 100Ah battery with the inverter still



wired and connected

[WhatsApp](#)



Can I Connect an Inverter Directly to a Charge Controller Without ...

In summary, connecting an inverter directly to a charge controller without a battery is generally not recommended. Batteries play a vital role in solar energy systems, providing ...

[WhatsApp](#)

How to Wire Solar Panel & Batteries in Parallel

Similarly, using two solar panels connected in parallel will result in faster battery charging and the ability to support more load. This parallel wiring method is essential for 12V systems, including ...

[WhatsApp](#)



Can I Connect an Inverter Directly to a Charge Controller?

Do NOT plug a power inverter directly to a charge controller. Charge controllers need a battery for reference to control the solar panel's input. First, you will need to connect a ...

[WhatsApp](#)





[Can You Charge a Battery While Using an Inverter?](#)

It is safe to charge a battery while using an inverter, and it benefits both because this reduces heat and the amps drawn. If you are using solar panels to charge the battery there is no ...

[WhatsApp](#)



Charging Battery While Connected To Inverter: The Best Way

With solar power, you can keep that battery backup charged while connected to your inverter. Let's look at the components you need and how to set up your solar system.

[WhatsApp](#)

[Can I Connect Inverter To Solar Charge Controller?](#)

In an off-grid solar system, the inverter and charge controllers are essential components, each having distinct responsibilities. You cannot connect an inverter to a solar charge controller. ...

[WhatsApp](#)



[Can You Run an Inverter Directly from a Solar Panel?](#)

For a regular off-grid solar panel system you need a number of different components including batteries, an inverter, and a solar charge controller. But you might be wondering if you can run ...

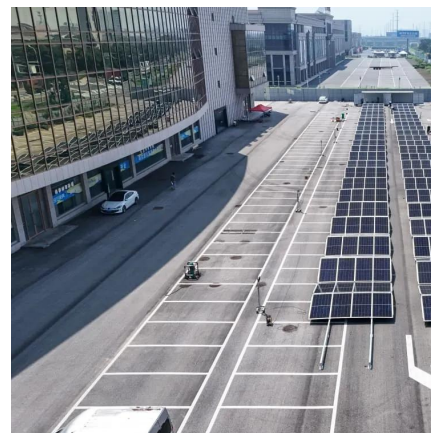
[WhatsApp](#)



Can I Connect an Inverter Directly to a Charge Controller?

The charge controller is designed to turn off below 10.5 volts to protect the battery. Connecting an inverter directly to a PWM charge controller would be unregulated if it is ...

[WhatsApp](#)



Can a separate solar charge controller and inverter both be connected

So, my question is as follows: Can I connect the solar panels to a solar charge controller and then to the batteries to charge them, while having the inverter connected at the same time? Bearing ...

[WhatsApp](#)

Contact Us

For catalog requests, pricing, or partnerships, please visit:
<https://www.straighta.co.za>