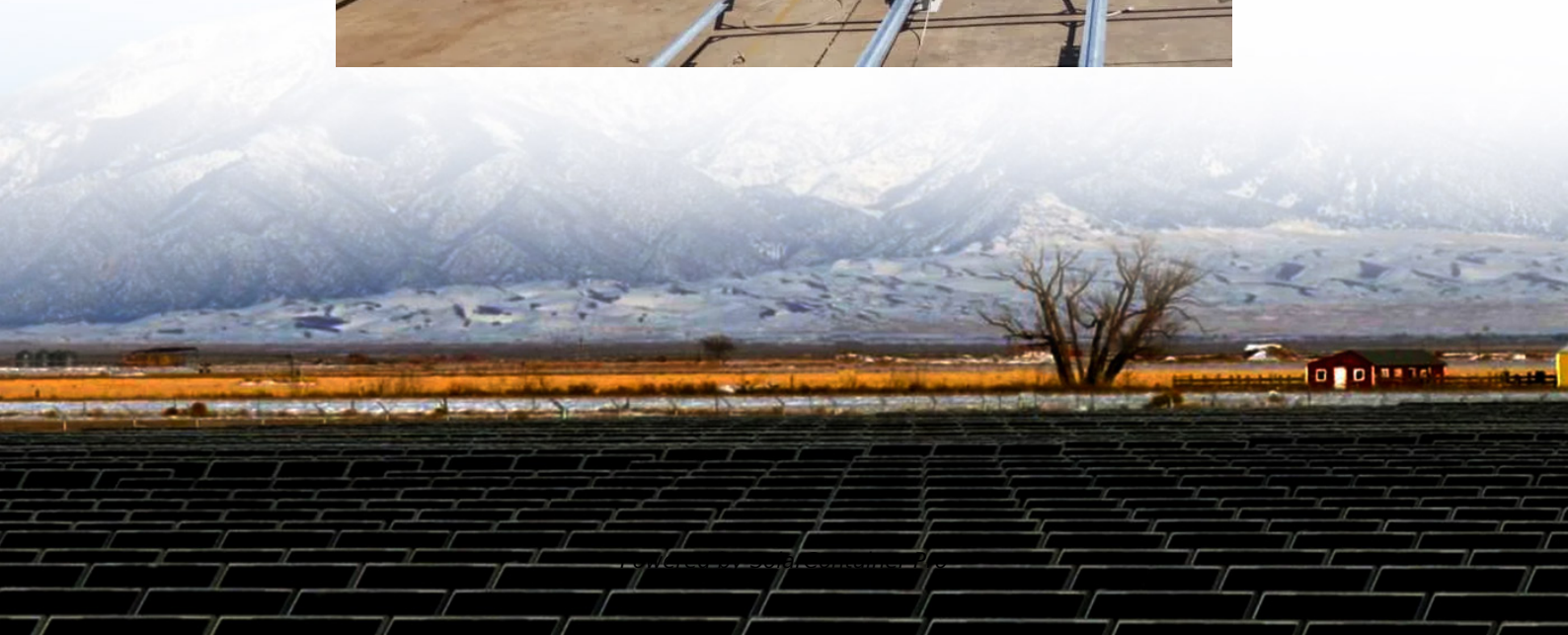


Solar battery cabinet charging speed





Overview

The charging speed depends on several factors, including solar panel efficiency, battery capacity, and weather conditions. Solar panels vary in efficiency ratings, typically ranging from 15% to 22%. Higher efficiency panels generate more electricity in the same amount of sunlight.



Solar battery cabinet charging speed



How many watts does solar charging speed take? , NenPower

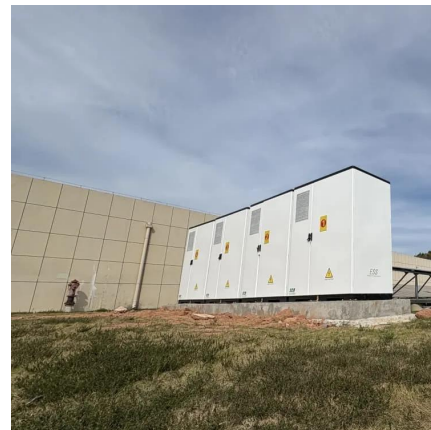
Solar charging speed varies depending on factors like solar panel efficiency, sunlight intensity, and battery capacity, typically ranging from 5 to 300 watts. The most ...

[WhatsApp](#)

How Fast Does Solar Panel Charge Battery: Factors Impacting Charging

Uncover the key factors affecting charging speed, such as sunlight intensity, panel efficiency, and battery types. Learn about the differences between lead-acid and lithium-ion ...

[WhatsApp](#)



How Long to Charge a Solar Battery: Factors Influencing Typical

To calculate the charging time for your solar battery, you need to consider the battery's capacity, the solar panel output, and the amount of sunlight available.

[WhatsApp](#)

How long does it take to charge batteries from solar panels

Using simple mathematical formulas, we set up a simple guide that will help you to calculate the charging time of your batteries using solar



panels. In our example we consider ...

[WhatsApp](#)



100kWh Solar Battery Storage Cabinet 280Ah LiFePO4 Battery ...

GSL-100 (DC50) (215kWh) (EV120) 100kWh Solar Battery Storage Cabinet 280Ah LiFePO4 Battery Air-cooling Photovoltaic Charging Energy Storage Cabinet is an efficient and reliable ...

[WhatsApp](#)



[Solar Battery Charging: Why It's So Slow](#)

On paper, the math for charging time looks really easy. You just divide the battery's size by your solar system's power. Using our numbers, if you have a 13.5 kWh Powerwall and a 5 kW solar ...

[WhatsApp](#)



How Fast Does Solar Panel Charge Battery: Factors Impacting ...

Uncover the key factors affecting charging speed, such as sunlight intensity, panel efficiency, and battery types. Learn about the differences between lead-acid and lithium-ion ...

[WhatsApp](#)





How Fast Do Solar Panels Charge Batteries: Factors Influencing Charging

Learn about the factors influencing charging speed, including efficiency, battery capacity, and weather conditions. With practical examples and time estimates for various ...

[WhatsApp](#)



[Solar Powered Rectangular Rapid Flashing Beacon \(RRFB\)](#)

All batteries and electronics shall be mounted in the solar engine, with no external control cabinet or battery cabinet required Solar engine and light bars shall be rated to a minimum of NEMA ...

[WhatsApp](#)



Contact Us

For catalog requests, pricing, or partnerships, please visit:
<https://www.straighta.co.za>