

Solar Onsite Energy Factory Direct





Overview

Do on-site solar systems work everywhere?

However, many on-site systems simply can't scale large enough to cover full consumption needs, so they typically only cover a percentage of the facility's needs, relying on traditional electricity to cover the deficit. They also don't work everywhere as solar and wind resource varies from location to location, as well as incentives and rebates.

Are on-site and off-site energy systems a good investment?

Many benefits exist for both on- and off-site systems. On-site systems offer a better return on investment because financial savings are across the entire electricity supply chain – costs associated with energy generation, transmission and distribution, market volatility, and environmental costs.

Do off-site solar and wind projects work everywhere?

They also don't work everywhere as solar and wind resource varies from location to location, as well as incentives and rebates. Large energy consumers are increasingly looking to procure their renewable energy from off-site projects.



Solar Onsite Energy Factory Direct



Operational optimization of a grid-connected factory with onsite

This paper proposes a methodology to minimize the electricity cost of a grid-connected factory that also has onsite solar power generation and battery storage. Purchases ...

[WhatsApp](#)

Energy 101: What is Direct Investment in Renewable Energy?

The majority of those interested in direct renewable energy investments place their focus on onsite energy solar (e.g. solar roofs) and wind power projects. A refreshing inflow of financial ...

[WhatsApp](#)



Onsite Solar Panels for Businesses: A Smart Way to Power Your ...

Onsite solar panels are not feasible for every business as a means of generating a significant proportion of their energy - but every kilowatt generated on site is a step in the ...

[WhatsApp](#)

What if I'm generating energy onsite in my office or factory?

Here's a breakdown of how to handle scope emissions in this scenario: If your on-site generation utilizes renewable sources like solar



panels or wind turbines, your related scope 1 and 2 ...

[WhatsApp](#)



Exploring the Potential of Factory Installed Solar + Storage ...

Solar + storage (S+S) as an energy resiliency solution can provide continuity, onsite generation, and backup power during critical events. This project explored factory-installed solar plus ...

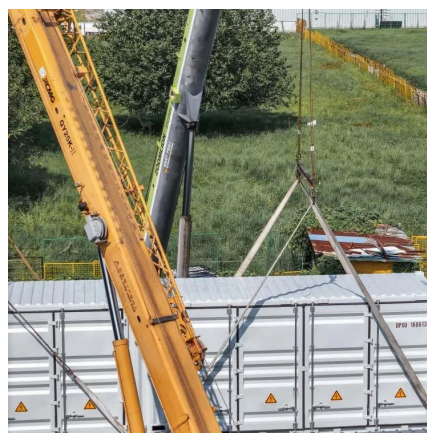
[WhatsApp](#)



Neufin , Onsite versus offsite: choosing the right renewable energy

Onsite solar installations are renewable energy systems deployed directly on your business premises. These systems offer immediate and visible benefits while giving you direct ...

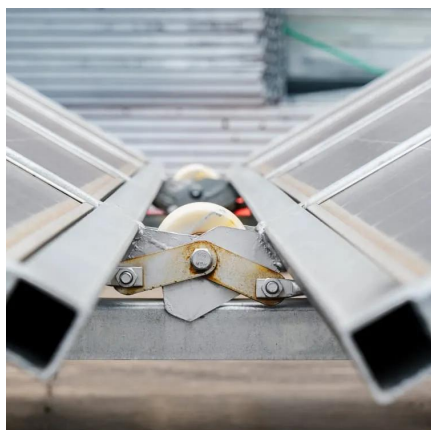
[WhatsApp](#)



Neufin , Onsite versus offsite: choosing the right renewable ...

Onsite solar installations are renewable energy systems deployed directly on your business premises. These systems offer immediate and visible benefits while giving you direct ...

[WhatsApp](#)

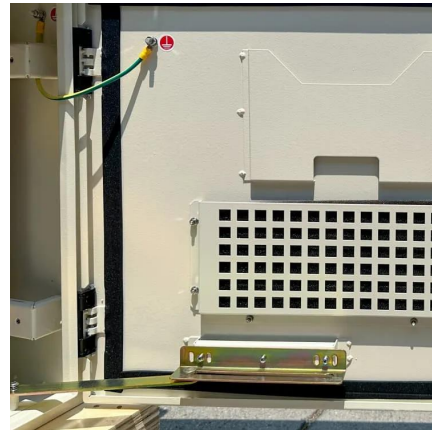




WAKATEK Energy Saving Solar Street Light Factory Direct ...

Key attributes IP Rating IP65 Warranty (Year)
2-Year Lighting solutions service Lighting and
circuitry design, Onsite metering, DIALux evo
layout, auto CAD layout, Project Installation ...

[WhatsApp](#)



Contact Us

For catalog requests, pricing, or partnerships, please visit:
<https://www.straighta.co.za>