

Solar 36v can be connected to 24v inverter





Overview

It's powerful, can be connected with other inverters, and uses a special technology (MPPT) to get the most power from your solar panels, working best with 24 Volt or 36 Volt panels. However, it only works when connected to the grid and needs good cooling. Do I need a 24 volt inverter?

Of course, you will need a 24 volt inverter (rather than a 12 volt inverter). Actually, you will barely be able to adequately charge one battery with a 300 watt panel. If you want to increase your battery bank, you will need more panels and a MPPT controller that can handle 50 amps.

How to charge a solar inverter?

The only reasonable way of firing up your inverter is directly to a battery of >24V, so gonna be 36. Find some way of charging the battery string with multiple solar panels in series to generate >36V and/or an alternator that can be connected to each 12 V battery in turn so as to charge each one separately.

How do I choose a 24 volt Solar System?

One of the important decisions you'll need to make is choosing the right voltage for your system. A 24 volt solar system is a popular choice for residential and small-scale commercial applications due to its efficiency and compatibility with various appliances and equipment.

What is a good 36 volt inverter?

WZELB makes a 2,000 and 5,000W, 36-volt inverter. It comes with cables, a replacement fuse, and numerous safety features, such as overload, overvoltage, short circuit shutdowns, etc. This inverter is flexible and easy to use, with 2xAC outlets, a digital display, and a terminal block for hard wiring. WZELB makes a very good 36-volt inverter.

How do you Power a solar system with a battery?



Finally, you'll need to connect the batteries to an inverter, which converts the DC (direct current) power from the solar panels and batteries into AC (alternating current) power that can be used to power your appliances. It's important to select an inverter with a 24 volt input and output rating that matches your system.

How many volts should a solar charge controller be rated for?

The charge controller should be rated for 24 volts to match the system voltage. Finally, you'll need to connect the batteries to an inverter, which converts the DC (direct current) power from the solar panels and batteries into AC (alternating current) power that can be used to power your appliances.



Solar 36v can be connected to 24v inverter



matching a 300w 36v solar panel to my 12v battery and 12/24v inverter

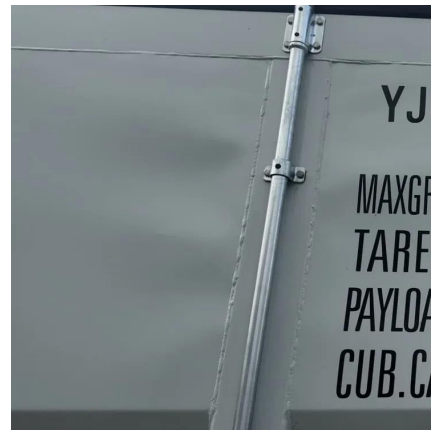
You already have the 12/24 volt inverter, so go with 24 volts and you have more rooms to grow later. if you have to use some 12 volts DC, you can get one of those 24 volt to ...

[WhatsApp](#)

Amazon : Micro 500W MPPT Solar Grid Tie Inverter Battery ...

Micro 500W MPPT Solar Grid Tie Inverter Battery Discharge Power DC 24V 36V 48V 72V to AC110V220V Solar Grid Connected Product Description 500W Grid tie micro inverter 12v for ...

[WhatsApp](#)



How to Wire Solar Panel & Batteries in Series for 24V System

In this solar panel wiring installation tutorial, we will show how to wire two solar panels and batteries in series with automatic UPS/Inverter for 120V-230V AC load, battery charging and ...

[WhatsApp](#)

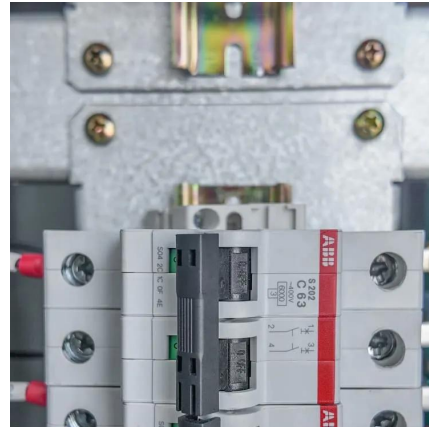
[Difference Between 12v and 24v and 36V Solar Panels](#)

If you want to add solar panels to your existing normal inverter, you will need a solar charge controller, which you should choose based on



your battery type. After that, you ...

[WhatsApp](#)



Connection Type for 36v Solar charge Controller ? : r/SolarDIY

Hi recently I purchased a MPPT Solar charge controller, it can be used for charging 12V,24V,36V and 48v batteries. I have 2500va solar inverter but it doesn't help to use my 1ph ...

[WhatsApp](#)



The Differences Between 24v and 48v Inverter: Which is Better?

The correct inverter voltage is essential for system efficiency, safety, and future scalability. In standard off-grid solar systems, RVs, or mobile power installations, choosing ...

[WhatsApp](#)



How to Wire a 24 Volt Solar System: A Step-by-Step Diagram Guide

Properly wiring the inverter is essential to ensure seamless and efficient power conversion. By following this step-by-step diagram guide, you'll be able to wire a 24 volt solar system with ...

[WhatsApp](#)

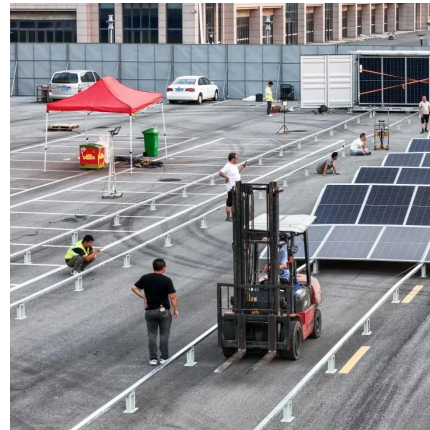




How to Wire Solar Panel & Batteries in Series for 24V ...

In this solar panel wiring installation tutorial, we will show how to wire two solar panels and batteries in series with automatic UPS/Inverter for 120V-230V AC ...

[WhatsApp](#)



[Difference Between 12v and 24v and 36V Solar Panels](#)

They can be used with a two-battery PWM solar charge controller or a PWM solar inverter. If you intend to use them with a single battery, you would need an MPPT solar charge ...

[WhatsApp](#)

matching a 300w 36v solar panel to my 12v battery and 12/24v ...

You already have the 12/24 volt inverter, so go with 24 volts and you have more rooms to grow later. if you have to use some 12 volts DC, you can get one of those 24 volt to ...

[WhatsApp](#)



36v 400 watt panels to 24v charge controller/batteries/inverter?!?

Your solar panel array voltage has nothing to do with your 24V battery voltage. Your 40A Renogy MPPT SCC 100V max input will handle your 12 100w panels connected 3S4P just ...

[WhatsApp](#)



Connecting solar panel and batteries of different voltages in series

To get 36VDC as input to your inverter, you'll need batteries setup to deliver 36VDC, such as three 12VDC batteries connected in series. $12\text{VDC} + 12\text{VDC} + 12\text{VDC} = 36\text{VDC}$.

[WhatsApp](#)



[The Best 36 Volt Power Inverters , SolarKnowHow](#)

Your inverter should match the DC voltage of your battery or solar system--e.g., 36 V input for a 36 V battery bank. Mismatches can cause poor performance or damage. Try to operate your ...

[WhatsApp](#)

Understanding the Compatibility of 12V Solar Panels with 24V ...

For instance, if you have 12V panels and 24V panels, each group should be connected to its specific charge controller and battery system. This separation can help ...

[WhatsApp](#)





Y& H 1000W Grid Tie Inverter Stackable MPPT Pure Sine Wave ...

About this item Grid Tie Inverter MPPT range: 26V - 36V?DO NOT use solar controller load ports to connect to the inverter? Solar Grid Tie Inverter-Vmp (of a solar panel) ...

[WhatsApp](#)

[Y& H: 1400 watt Solar Grid Tie Inverter 24/36V Review](#)

2 days ago· The Y& H 1400 watt Grid Tie Inverter lets you use power from your solar panels to help power your home by sending electricity to the main power grid. It's powerful, can be ...

[WhatsApp](#)



Contact Us

For catalog requests, pricing, or partnerships, please visit:
<https://www.straighta.co.za>