

Size of polycrystalline photovoltaic panels





Size of polycrystalline photovoltaic panels



[Solar Panel Size Chart - SizeChartly](#)

In comparison, polycrystalline panels are slightly larger and less efficient than monocrystalline panels, typically sized around 66 x 40 inches. They offer a more cost-effective solution, but ...

[WhatsApp](#)

Solar Panels Size & Weight (Including Commercial Dimensions)

Individual PV solar cells are thin slices of silicon that typically measure 6 inches long by 6 inches wide. Multiple solar cells are assembled together to form a rectangular ...

[WhatsApp](#)



[340 Watt Multi Crystalline 72 Cell Solar Panel in India](#)

The solar panel size is 1970 L x 990 W x 40 B mm 3 and it is made of Polycrystalline solar cells of size of 156.75 mm x 156.75 mm. There are 72 cells in the orientation of 12x6 consisting of this ...

[WhatsApp](#)



Polycrystalline Solar Panel Size: A Comprehensive Guide to ...

Polycrystalline solar panels come in a variety of sizes, with the most common being 65 inches by 39 inches. However, the size can vary depending



on the specific power ...

[WhatsApp](#)



[Monocrystalline solar panels: the expert guide \[2025\]](#)

Monocrystalline solar panels have completely replaced polycrystalline panels as the most popular solar panel in the world. Monocrystalline solar cells now account for 98% of solar ...

[WhatsApp](#)



Solar Panel Dimensions and Weight: Everything You Need to ...

The weight of a solar panel is usually provided by the manufacturer and can be found in the solar panel's specification sheet. For example, a standard size polycrystalline ...

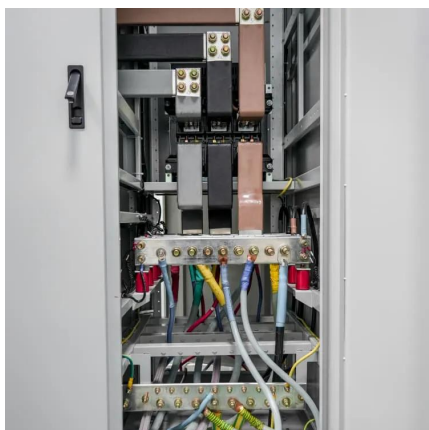
[WhatsApp](#)



What is the size of polycrystalline photovoltaic panels?

Most polycrystalline panels follow industry-standard sizing to ensure compatibility with mounting systems and inverters. A typical 60-cell module measures approximately *1.0 meters (39 ...

[WhatsApp](#)

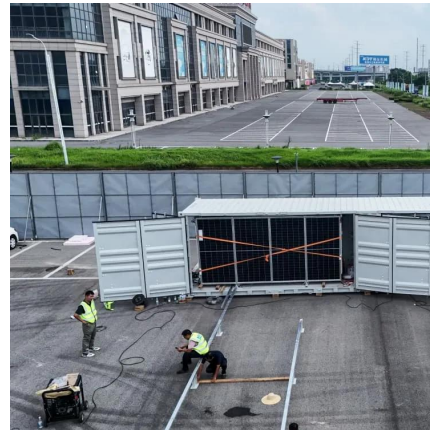




[Polycrystalline Solar Panel Specifications](#)

Most polycrystalline panels follow industry-standard sizing to ensure compatibility with mounting systems and inverters. A typical 60-cell module measures approximately **1.0 meters (39 ...

[WhatsApp](#)



Polycrystalline vs. Monocrystalline Solar Panels: The Ultimate Guide

Solar panels can be manufactured from many different materials, but crystalline silicon is the most common option by far. Depending on how molten silicon is solidified into ...

[WhatsApp](#)

[Solar Photovoltaic Panel Sizes \[Full List And Other FAQs\]](#)

Polycrystalline panels come in different sizes, from small-weight panel options for portable use to large-weight commercial solar panels. Typical sizes for commercial installations include the ...

[WhatsApp](#)



What Size Are Solar Panels? A Comprehensive Guide to ...

With the average residential solar panel measuring approximately 65 inches by 39 inches, the choice between different types--monocrystalline, polycrystalline, and thin ...

[WhatsApp](#)



Polycrystalline Solar Panel: Definition, How it Works, and Features

Whether you choose between polycrystalline or monocrystalline panels for your home solar panel system depends on your exact needs. In most cases, it's best to consult with ...

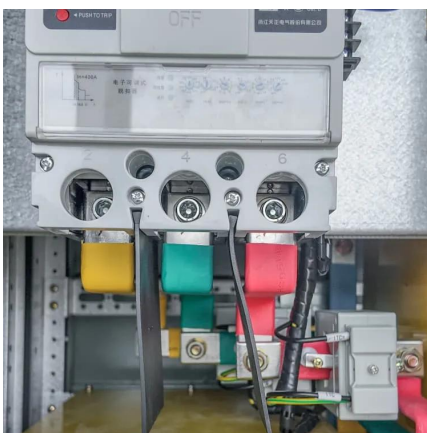
[WhatsApp](#)



Standard Solar Panel Sizes And Wattages (100W-500W ...

To bridge that gap of very useful knowledge needed, we have compared and averaged the sizes of 100-watt to 500-watt solar panels available on the market. The goal here is to get to the ...

[WhatsApp](#)



Advanced PV Modules , Polycrystalline Solar Panels , EMMVEE

Emmvee Group is based in India & USA stands as a foremost manufacturer of polycrystalline solar panels. Offering both affordable and premium photovoltaic modules.

[WhatsApp](#)





Contact Us

For catalog requests, pricing, or partnerships, please visit:
<https://www.straighta.co.za>