

Should the battery cabinet at the telecom site be replaced





Overview

What is a telecommunications outside plant cabinet?

A typical Telecommunications Outside Plant cabinet is a non-controlled environment where temperatures can reach or exceed 140 Degrees Fahrenheit. Battery Float Voltage: The float voltage is that voltage, which provides the correct amount of battery charge current to maintain an optimal state of charge in the battery cell.

How often do network and maintenance technicians conduct battery testing?

TESTING METHODS AND TEST EQUIPMENT: Network and maintenance technicians shall conduct battery testing and maintenance routines based upon internal DC Cell Resistance testing. The DC Cell Resistance battery tests are conducted on a Three Times Per Year (4-month intervals) schedule to provide trended data and pass/fail data.

Can a battery be replaced based on a defective cell resistance?

with battery suppliers that specify the warranty replacement of battery systems based on Defective DC Cell Resistance measurements. Submitting defective Cell Resistance data to the battery manufacturer will facilitate servicing of the battery warranty. The data must include at least two consecutive cell resistance readings.

Can I measure DC cell resistance on OSP battery systems?

Note: Measure only the DC Cell Resistance on OSP battery systems that do not have connectors bolted or strapped between each battery block. Some systems only CLIP into a wiring harness and do not have solid connectors or straps that can be measured.

How often are DC cell resistance battery tests conducted?

The DC Cell Resistance battery tests are conducted on a Three Times Per Year (4-month intervals) schedule to provide trended data and pass/fail data. This



test data will be used to indicate battery condition and determine the required actions: The battery condition is good. Continue testing after four months.

Why do we need a battery maintenance program?

This of course allows the user to know the current battery condition and to predict with some accuracy the remaining life and capacity. Economics of the Maintenance Program: This set of maintenance and testing routines will rely upon a technician's availability or ability to reach (all) the locations requiring service.



Should the battery cabinet at the telecom site be replaced



What Are Telecommunications Batteries and Why Are They ...

Telecommunications batteries are specialized energy storage systems designed to provide backup power during outages, ensuring uninterrupted connectivity for networks. They ...

[WhatsApp](#)

What Are Telecom Battery Enclosures and Why Are They ...

Telecom battery enclosures maintain network reliability by protecting batteries from extreme temperatures, moisture, and physical tampering. They incorporate cooling systems to ...

[WhatsApp](#)



Battery power display of communication network cabinet system

To ensure uninterrupted communication services, it's crucial to have a reliable and efficient backup power system in place. We will guide you through the process of finding the right ...

[WhatsApp](#)

How Do Telecom Lithium Battery Systems Ensure Uninterrupted ...

FAQ How often should telecom batteries be replaced? Lithium batteries typically last 10-15 years vs. 3-5 years for lead-acid, with



replacement dictated by capacity dropping ...

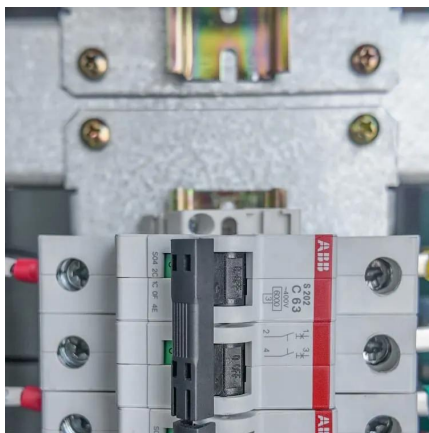
[WhatsApp](#)



[A Comprehensive Guide to Telecom Battery Cabinets](#)

A comprehensive guide to telecom battery cabinets provides essential information on their features, types, selection criteria, installation tips, and innovations in technology. ...

[WhatsApp](#)



Tips for Designing Battery Cabinets/Enclosures , SBS Battery

Calculating Cabinet Height Chargers need room to breathe and batteries need extra room above for maintenance (watering and testing). To calculate the minimum height of the cabinet, use ...

[WhatsApp](#)



How to Maintain Telecom Batteries for Optimal Performance?

When Should Telecom Batteries Be Replaced Instead of Repaired? Replace batteries showing:
1) Below 80% rated capacity, 2) Voltage deviation >15% across cells, 3) ...

[WhatsApp](#)

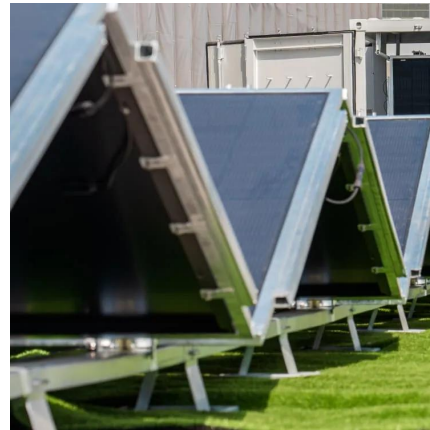




Battery Energy Storage Systems: Main Considerations for Safe

This webpage includes information from first responder and industry guidance as well as background information on battery energy storage systems (challenges & fires), BESS ...

[WhatsApp](#)



Telecom Tower Battery Guide: How to Ensure Reliable Backup ...

Introduction Telecom towers serve as critical infrastructure for wireless communication. To ensure uninterrupted service, especially in areas prone to power outages ...

[WhatsApp](#)

What Factors Influence Telecom Battery Replacement Costs?

Telecom battery replacement costs range from \$200 to \$5,000+ depending on battery type, system voltage, and site accessibility. Valve-regulated lead-acid (VRLA) batteries ...

[WhatsApp](#)



ESTEL's Complete Guide to Telecom Battery Backup Systems ...

By following these steps, you can complete the installation process efficiently and ensure your telecom battery backup systems operate reliably during power outages.

[WhatsApp](#)



ESTEL's Comprehensive Guide to Risk Analysis of Telecom Cabinet ...

Selecting the right battery design is critical for ensuring safety and performance in telecom cabinets. Industry benchmarks emphasize the importance of proactive safety analysis ...

[WhatsApp](#)



What Are Telecom Battery Cabinets and How Do They Ensure ...

Telecom battery cabinets are specialized enclosures housing backup batteries that provide uninterrupted power to telecommunications infrastructure during outages. They ensure ...

[WhatsApp](#)

[Why Are Battery Heaters Essential for Telecom Cabinets?](#)

Battery heaters for telecom cabinets prevent extreme cold from damaging backup batteries, ensuring uninterrupted power supply to critical communication infrastructure. They ...

[WhatsApp](#)





Contact Us

For catalog requests, pricing, or partnerships, please visit:
<https://www.straighta.co.za>