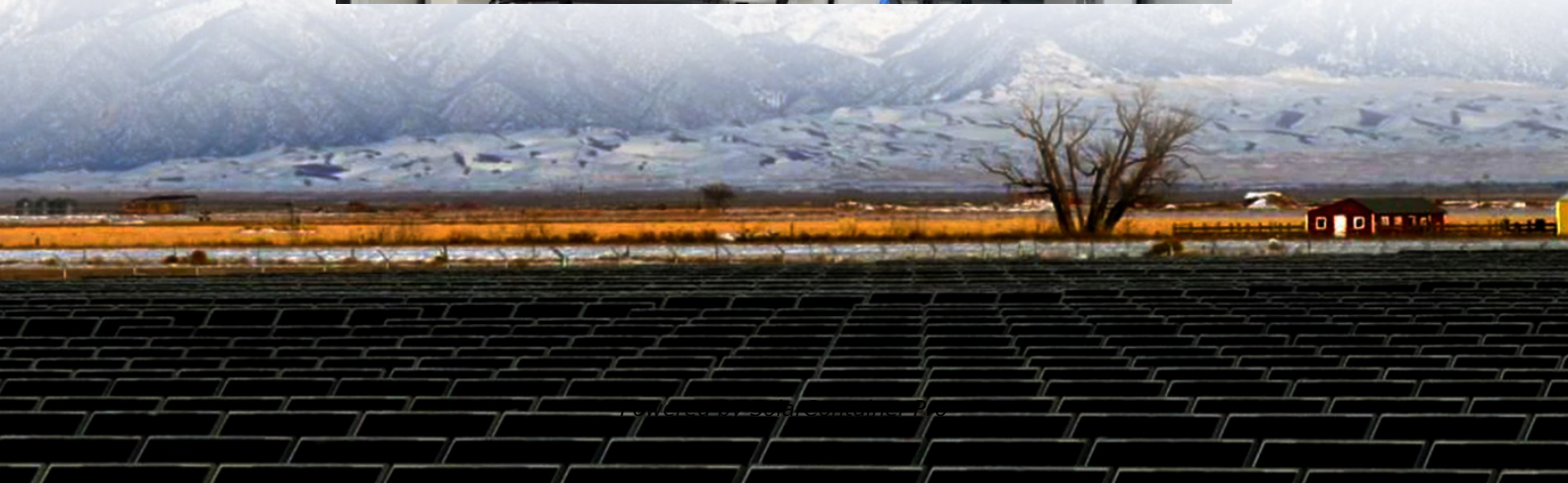
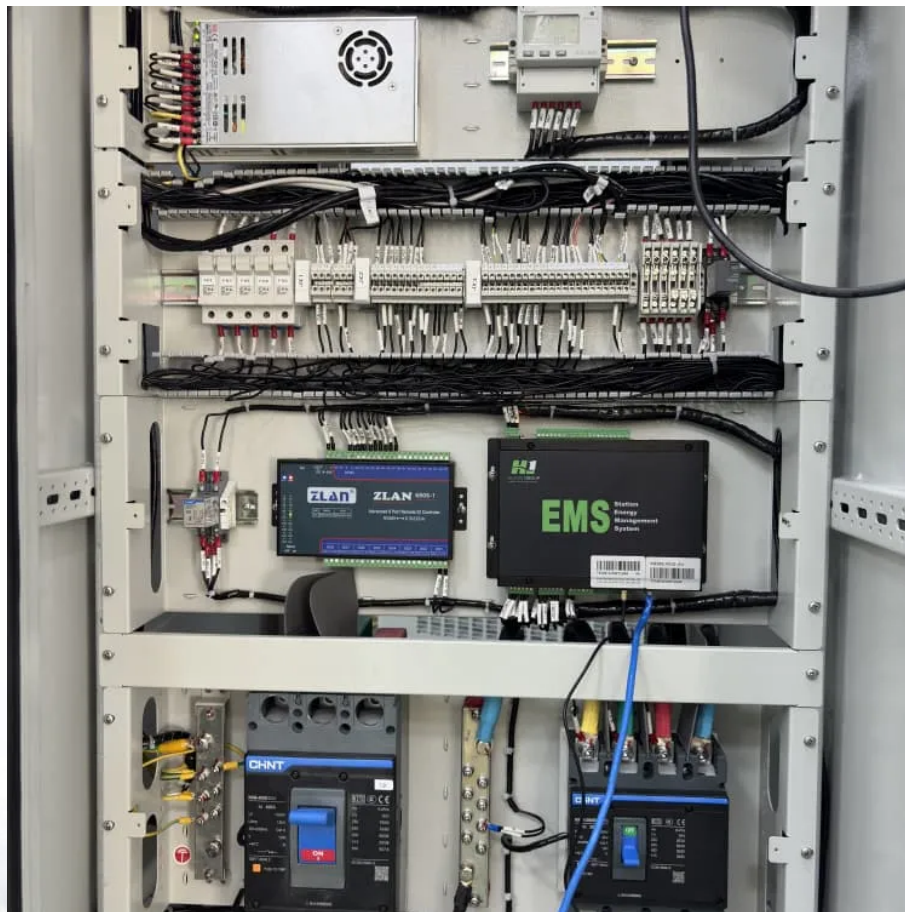


# **Rural light complementary photovoltaic power generation photovoltaic panels**





## Overview

---

Can fish and shrimp be cultivated under photovoltaic panels?

Fish and shrimp can be cultivated in the water below the photovoltaic panels. A new power generation model that can generate electricity on the top and raise fish on the bottom. In 2012, the country's first "fishing-light complementary" photovoltaic power station was built in Jiangsu and connected to the grid.

Can digital service platforms help a photovoltaic Agricultural Company respond to policy change?

The transformation of the business model from traditional solar photovoltaic power generation and fishery business to digital service platforms can not only accelerate the expansion of distributed renewable energy and be potentially deployed globally but also assist photovoltaic agricultural company to effectively respond to policy change.

What is a 'fishing-light complementary' photovoltaic power station?

A new power generation model that can generate electricity on the top and raise fish on the bottom. In 2012, the country's first "fishing-light complementary" photovoltaic power station was built in Jiangsu and connected to the grid. It was mainly built on the aquaculture pond.

What is a "fishing & photovoltaic complementary" model?

From the perspective of energy utilization, the "Fishing and Photovoltaic Complementary" model adopts a green and clean energy—solar energy. Solar energy is a typical modern renewable energy, which is clean and ecological, and has abundant reserves.

Why do FPC systems have lower land requirements than ground-mounted photovoltaic systems?

The water's cooling effect, its high reflectivity, and less dust accumulation can



also improve PV power generation efficiency. Therefore, it is evident that FPC systems exhibit significantly lower land requirements compared to ground-mounted photovoltaic systems when considering electricity production. Table 6.

What are agricultural complementary power stations?

Agricultural complementary power stations generally use high transmittance of PV modules and combined with the relatively higher-value economic crops. There are open-type agricultural power station, greenhouse-type agricultural power station and other types.



## Rural light complementary photovoltaic power generation photovol

---



### An overview of the policies and models of integrated development ...

First, the development status of wind and solar generation in China is introduced. Second, we summarize the relevant policies issued by the National Development and Reform ...

[WhatsApp](#)

### The Largest Agricultural Light Complementary Photovoltaic Power

Recently the solar inclinometer ZCT1360J-LBS-BUS-77 has been used in an open-type Agricultural Light Complementary Photovoltaic Power Generation Program based in Ningxia ...

[WhatsApp](#)



### [LONGi Group-Agriculture-solar Complementary](#)

The agriculture-solar complementary power stations not only increase the employment rate of local residents but improve the income level of local residents, thus guarding green mountains, ...

[WhatsApp](#)



### Future Trends Shaping Agricultural Light Complementary Photovoltaic

The global market for agricultural light complementary photovoltaic (PV) power stations is experiencing robust growth, driven by





increasing demand for sustainable energy solutions in ...

[WhatsApp](#)



### **Agricultural Light Complementary Photovoltaic Power Station and**

This segmentation details the specific applications of agricultural light complementary photovoltaic power stations within different types of agricultural operations, ...

[WhatsApp](#)



### **Complementary fishery and light opens up a new path for the ...**

"Fishing and solar complementarity" refers to the combination of fish farming and photovoltaic power generation. An array of photovoltaic panels is erected above the water ...

[WhatsApp](#)



### **[Why is photovoltaic agriculture growing in China?](#)**

What is photovoltaic agriculture? Photovoltaic agriculture, the combination of photovoltaic power generation and agricultural activities, is a natural response to supply the green and sustainable ...

[WhatsApp](#)





## The prospects of photovoltaic + fish pond model-sunroverpv

In 2023, Huazhuang Village, Wujian Town, Jiangdu District, Yangzhou, Jiangsu Province built a 15-megawatt "fish-light complementary" project, with the upper layer used for ...

[WhatsApp](#)



## Complementary agriculture and photovoltaic - Solarstone Power

To meet the needs of crop growth, different light waves are required for crop growth and photovoltaic power generation. Agricultural photovoltaics complementary power ...

[WhatsApp](#)

## The Largest Agricultural Light Complementary Photovoltaic Power

Agricultural complementary power stations generally use high transmittance of PV modules and combined with the relatively higher-value economic crops. There are open-type agricultural ...

[WhatsApp](#)



## Analysis Of Multi-energy Complementary Integration ...

Abstract This paper studies ways to improve the capacity of renewable energy to reduce the adverse effects of renewable energy generation on the power grid system, improve energy ...

[WhatsApp](#)



### **The development of fishery-photovoltaic complementary industry ...**

This innovative model involves conducting aquaculture activities while installing photovoltaic modules on the water surface to harness solar energy for electricity generation.

[WhatsApp](#)



### [Overview of hydro-wind-solar power complementation](#)

These regions are also rich in wind and solar energy sources; thus, the generation of hydropower from these rivers can help develop a hydro-wind-solar complementary base.

[WhatsApp](#)



### **Growing solar: Optimizing agrivoltaic systems for crops and clean energy**

Agrivoltaics integrates solar power generation with agriculture. Researchers at Fraunhofer Institute for Solar Energy Systems (ISE) are exploring different scenarios to ...

[WhatsApp](#)





### **30MWp LISHUI Forest Farmers Photovoltaic Complementary Photovoltaic**

Yunhe Baoshan 30MWp Forest Farmers Photovoltaic Complementary Photovoltaic Power Generation Project. The project covers an area of more than 1,000 acres, with a total ...

[WhatsApp](#)

### **A kind of agricultural light complementary power generation ...**

The embodiment of the present invention utilizes the light guide assembly to realize the illumination of the photovoltaic panel shaded area, thereby expanding the types of plants ...

[WhatsApp](#)



### **Agricultural Light Complementary Photovoltaic Power Station ...**

The global agricultural light complementary photovoltaic power station market is experiencing robust growth, driven by increasing demand for sustainable and cost-effective ...

[WhatsApp](#)



## **Contact Us**

For catalog requests, pricing, or partnerships, please visit:  
<https://www.straightta.co.za>