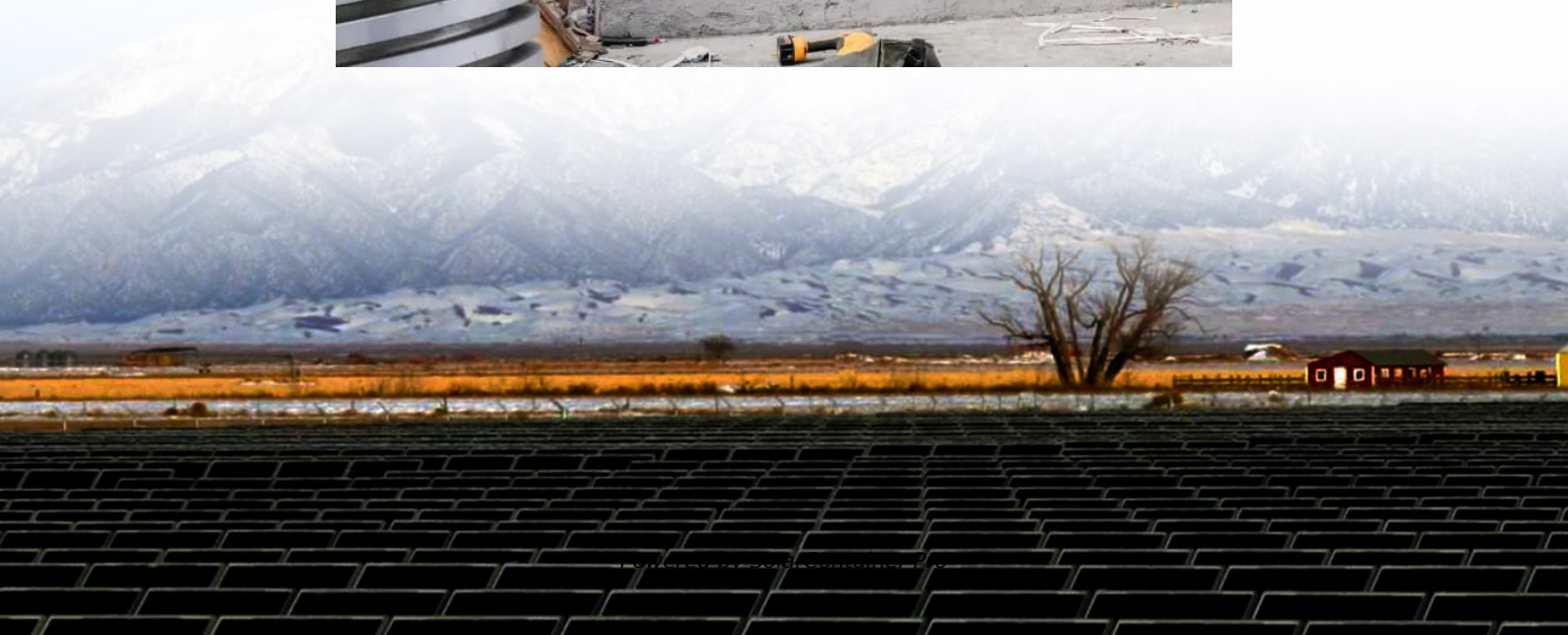


# **Ring main unit energy storage motor assembly solution**





## Overview

---

What is a smart ring main unit (RMU)?

Seamlessly integrated with the Easergy T300 remote terminal unit (RTU) and our innovative conditional monitoring sensors, the smart ring main unit (RMU) is an innovative solution that makes it easier for you to answer the evolving challenges of electrical distribution.

What are the main functions of a ring main unit (RMU)?

The main functions of a Ring Main Unit (RMU) are circuit control, isolation from faulty equipment, and controlling circuits to switch functions. The main ring unit is deployed in a secondary distribution system. It is mostly utilized to provide an uninterrupted power supply.

What is a ring main unit?

Ring Main Unit is a fully enclosed, compact, factory assembled cabinet used for medium-voltage power distribution. In simple words, this is a switchgear unit that is easily replaceable, requires low maintenance, and is highly protected in nature.

What is a tower ring main unit?

Our tower ring main unit is a compact, prefabricated MV switchgear unit suitable for installation within wind towers. Some of its key advantages include: At just 500mm wide and 1.6m tall, our 40.5kV tower RMU takes up minimal interior space within wind turbine towers. It is the smallest in the wind power industry.

What are the benefits of a tower ring main unit?

A tower ring main unit minimizes land and infrastructure usage compared to conventional ground-mounted switchgear. It also significantly reduces cable trenching, lowering material expenses. Shorter cable runs mean smaller cable lengths and lower costs. 2. Reduce Electricity Loses.



What is an RMU & how does it work?

A notable application is in wind farms. An RMU distributes power from a wind turbine to outgoing power lines. A typical RMU is installed in the prefabricated substation next to the wind turbine tower. It is on ground level. This placement works well for smaller capacity turbines that have relatively lower power outputs.



## Ring main unit energy storage motor assembly solution

---



### [Abb high voltage ring main unit energy storage](#)

The current ABB SafePlus range satisfies the most complex system specifications. The most unique specialization is the development of the cable ring switchgear. The numerous public ...

[WhatsApp](#)

### [Ring main unit motor energy storage principle](#)

Seamlessly integrated with the Easergy T300 remote terminal unit (RTU) and our innovative conditional monitoring sensors, the smart ring main unit (RMU) is an innovative solution that ...

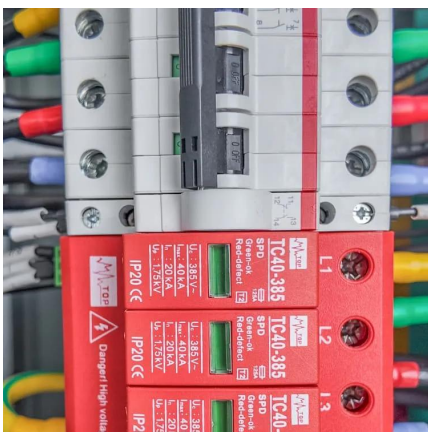
[WhatsApp](#)



### [Ring main Unit \(RMU\) , Schneider Electric India](#)

Ring main unit (RMU) is an innovative solution that makes it easier to answer the evolving challenges of electrical distribution. Discover our best-in-class solution for accelerating your ...

[WhatsApp](#)



### [Air Insulated Ring Main Unit up to 12kV](#)

The AegisEcoTec Air Insulated 12kV Ring Main Unit units are designed to be used for indoor and outdoor can be used either as a free-standing unit or installed in a compact substation or kiosk.





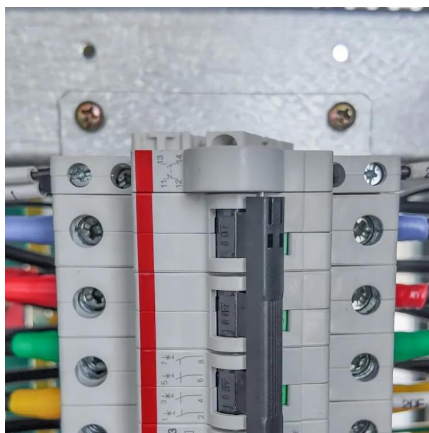
[WhatsApp](#)



### [Ring Main Unit Energy Storage Hezong Technology](#)

As one of the leading one-stop solution provider of power distribution systems in China, we offer products ranging from gas insulated ring main units, MV/LV air insulated switchgear,

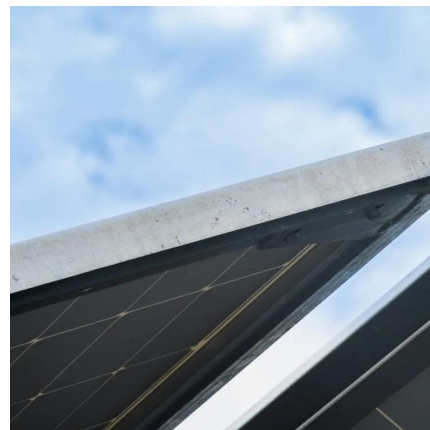
[WhatsApp](#)



### **Ring Main Unit Electric Energy Storage: Powering the Future of ...**

Integrating ring main unit electric energy storage isn't just about keeping lights on - it's about enabling smart cities, supporting EV revolutions, and maybe even powering Elon's Mars ...

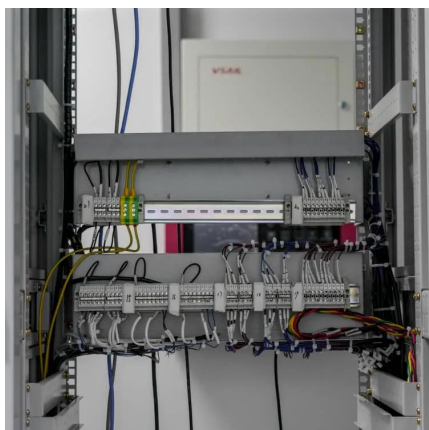
[WhatsApp](#)



### [A GUIDE TO RING MAIN UNITS RMU IN WIND POWER...](#)

Ring main unit energy storage battery standard  
In an electrical system, a ring main unit (RMU) is a factory assembled, metal enclosed set of used at the load connection points of a ring-type ...

[WhatsApp](#)





## Ring Main Unit Electric Energy Storage: Powering the Future of ...

Imagine your neighborhood's electricity grid as a 90s flip phone trying to run TikTok. That's essentially what happens when aging ring main units (RMUs) meet today's renewable energy ...

[WhatsApp](#)



## [Why does the ring main unit store energy? . NenPower](#)

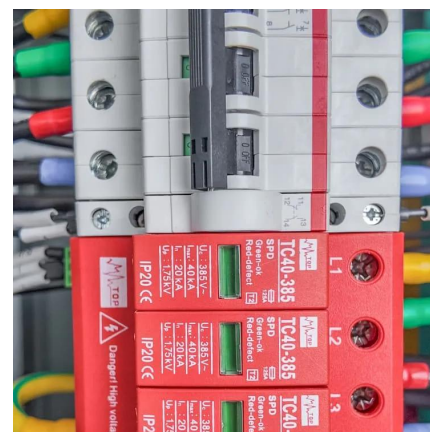
The presence of energy storage mechanisms within ring main units significantly bolsters reliability. When disruptions occur within the electrical supply, RMUs can redistribute ...

[WhatsApp](#)

## [A Guide to Ring Main Units \(RMU\) in Wind Power Industry](#)

A tower ring main unit integrates gas insulated switchgear, protection, and transformer functions compactly within the tower structure. This modular design allows quick ...

[WhatsApp](#)



## [Ring main unit energy storage motor assembly solution](#)

Seamlessly integrated with the Easergy T300 remote terminal unit (RTU) and our innovative conditional monitoring sensors, the smart ring main unit (RMU) is an innovative solution that ...

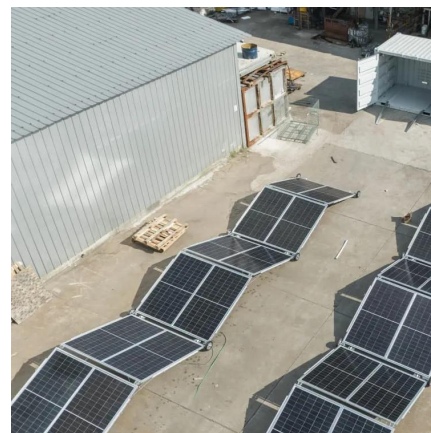
[WhatsApp](#)



### [Ring main unit energy storage principle](#)

Superconducting magnetic energy storage (SMES) systems store energy in the magnetic field created by the flow of direct current in a superconducting coil that has been cryogenically ...

[WhatsApp](#)



### **Ring Main Unit (RMU) assembly line-Yalong intelligent technology**

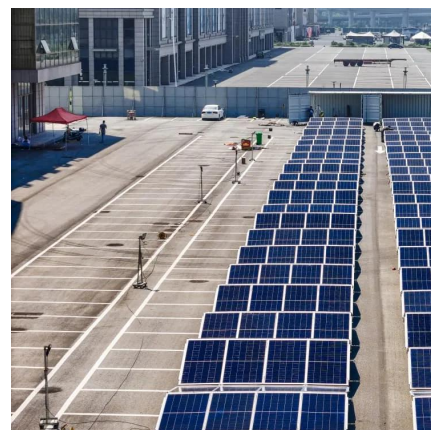
As an important switching equipment in the distribution network, the production process of ring network cabinets must strictly follow the manufacturing specifications of electrical equipment ...

[WhatsApp](#)

### [Abb high voltage ring main unit energy storage](#)

Leading Multinational Energy company Enel installed first SF6-free SafePlus AirPlus(TM) Ring Main Units from ABB center Enel Global Infrastructure & Networks will reduce greenhouse gas ...

[WhatsApp](#)





## Contact Us

---

For catalog requests, pricing, or partnerships, please visit:  
<https://www.straighta.co.za>