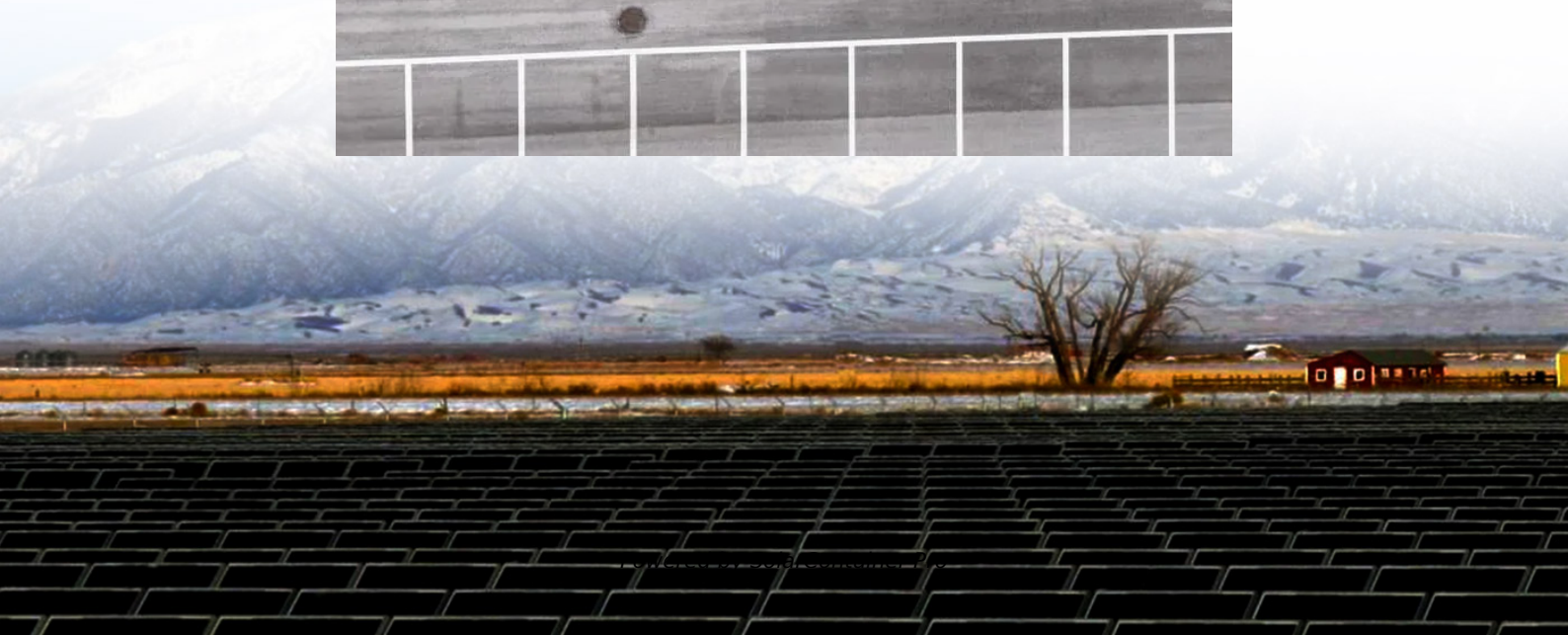
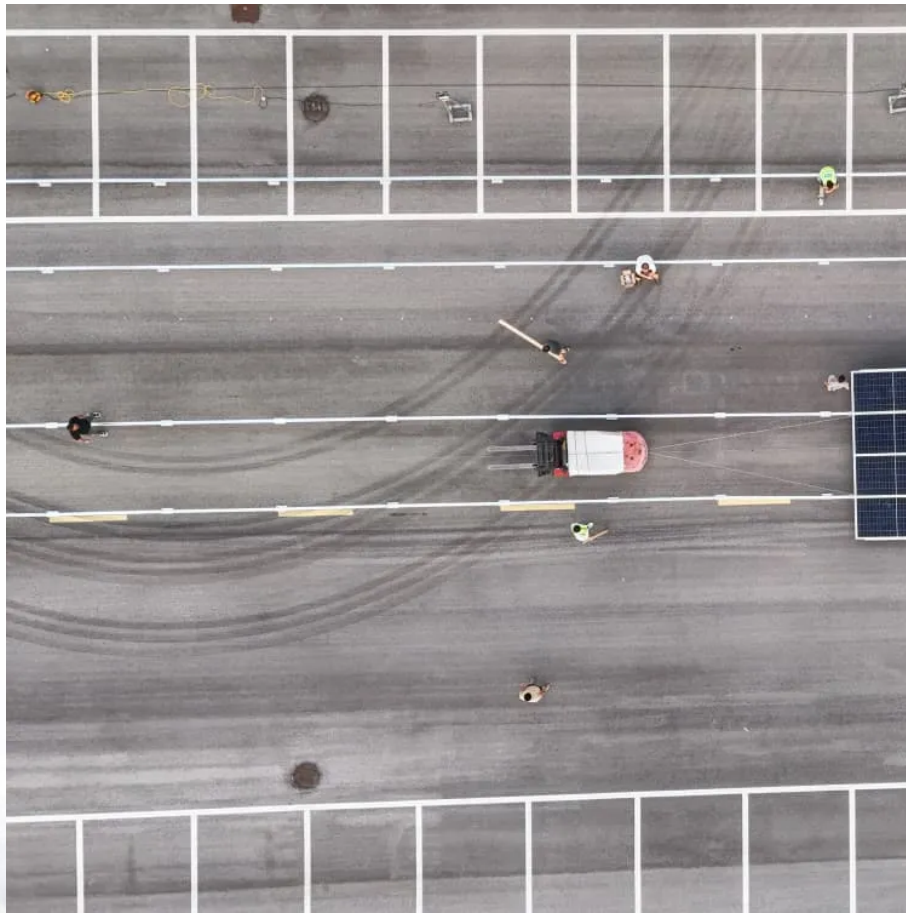


# **Replacing batteries in the battery cabinet without interrupting the load**





## Overview

---

This is super easy to do in most vehicles. Have a couple quick tips. It's very important, always disconnect the negative terminal first. If you go to disconnect the positive terminal and hit the wrench bare metal to bare metal, it's going to bridge that gap and it will.

What do you do with the old battery that you just replaced?

Well, anytime you go buy a new battery, there's an extra charge called a core charge, and you get that money back when you bring back your old battery. If you didn't buy a new battery, you don't have a.

Let's get the tie down in place and tighten it down until it's snug. Reconnect the positive side first. Get one of the red felt pads on there. Don't.

Can you change a car battery without losing settings?

However, many vehicle owners are concerned about losing settings such as radio presets, clock time, and seat positions when replacing the battery. Fortunately, there are methods to change a car battery without losing these settings, ensuring a smooth transition and minimal disruption to your driving experience.

How can I prevent my car battery from losing programming?

Luckily, by taking a few simple steps, you can prevent your vehicle's programming from being lost. Here are 5 steps to change your car battery and not lose its settings: Gather your tools. Ensure your safety. Connect a secondary power source. Remove the old battery. Set up the new battery.

What happens when you replace a car battery?

Learn more. When replacing a car battery, most people disconnect the battery completely before installing the new one. This causes your cars' computer to lose its stored data. Seat position, navigation system, radio presets and much more settings might have to be reset.

What happens if you change a car battery without backup power?



Those changes are referred to as adaptive memory. When you change a car battery without providing any backup power, the computers lose all the adaptive memory. That can cause a no start or a start with rough idle. What you need: It's easy to maintain all memory and eliminate the need to perform a throttle body relearn when you change a battery.

How do I change a car battery without losing adaptive memory?

Purchase an OBDII memory saver cable and a jumper pack Clore ESA30 cable. Connect to OBDII port in vehicle. Connect other end to a jumper pack. Key OFF. Then swap battery while protecting the positive cable from touching metal ©, 2021 Rick Muscoplat Learn how to change a car battery without losing adaptive memory.

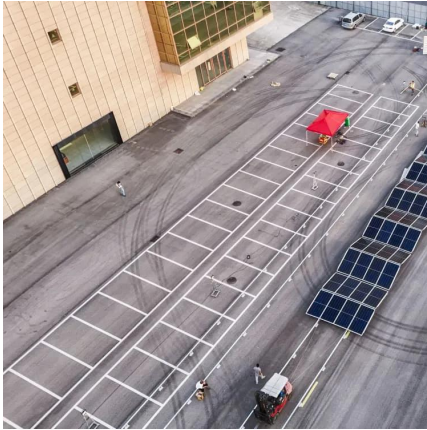
Can You disconnect a car battery before reinstalling a retaining bracket?

Before disconnecting the power supply, you want to first tighten the battery cables to avoid power interruptions. After the battery terminals are properly secured, you can disconnect the power supply and reinstall the battery retaining bracket, if your car has one.



## Replacing batteries in the battery cabinet without interrupting the

---



[Need some tips on replacing a UPS onto a server rack!](#)

Hi all, Our company recently had to replace a defective APC unit (with a battery pack) and since it's my first time replacing a huge UPS unit like this, I would like to ask few tips ...

[WhatsApp](#)

### The SECRET to Changing a Car Battery Without Resetting ...

Want to replace your car battery without losing your radio presets, clock settings, or ECU memory? In this video, I'll show you a simple trick to swap your car battery while keeping a 12V

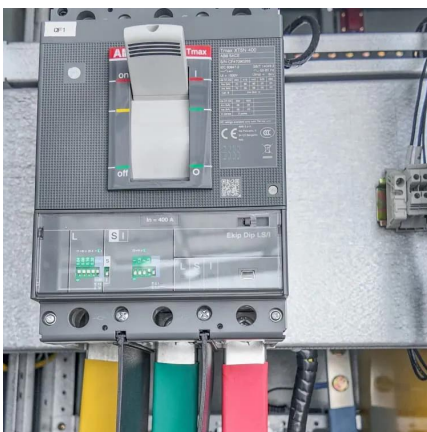
[WhatsApp](#)



[5 Steps To Change Car Battery and Not Lose Settings](#)

Luckily, by taking a few simple steps, you can prevent your vehicle's programming from being lost. Here are 5 steps to change your car battery and not lose its settings: Gather ...

[WhatsApp](#)



### Liebert® EXS External Battery Cabinet Installer/User Guide

After replacing battery jars in a battery cabinet, replace the retaining straps that hold the jars in place on the shelves. This will limit accidental





movement of the jars and connectors should the ...

[WhatsApp](#)



### **Liebert® GXT5 Installer/User Guide**

Battery mode supplies battery power to the load if utility power fails or if the utility voltage goes outside of the permissible range. On the front-panel display, the run indicator (green) is On, ...

[WhatsApp](#)



### **[UBC80 Battery Cabinet Installation, Operation.](#)**

Review the battery system schematic that is located attached to the inside of a cabinet door to determine the number of batteries that need to be installed in the cabinet, the position of these ...

[WhatsApp](#)



### **Solved: Can I replace battery without turning OFF UPS Power ...**

Yes, you can do a hot swap on the battery on this model. Just make note that when you remove the battery that's in there currently, the UPS may start flashing the replace ...

[WhatsApp](#)

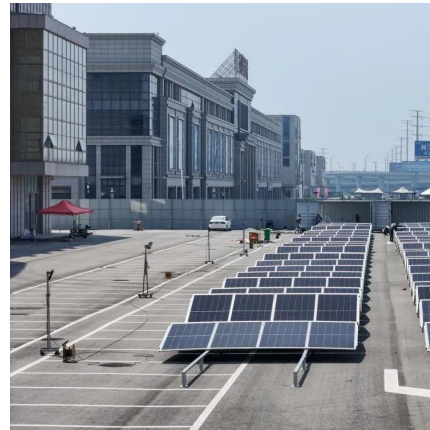




### **How to Safely Remove & Replace a Car Battery: Step-by-Step ...**

2 days ago · Need to replace your car battery? Follow this step-by-step guide to safely remove the old one and install a new battery without damaging your vehicle.

[WhatsApp](#)



### **Eaton Samsung Gen 3 Battery Cabinet Installation and ...**

The battery cabinet is heavy [with battery modules installed] (see Table 3). If unpacking and unloading instructions are not closely followed, the cabinet may tip and cause serious injury.

[WhatsApp](#)

## **Contact Us**

---

For catalog requests, pricing, or partnerships, please visit:  
<https://www.straightta.co.za>