

Pure sine wave inverter intermittent operation



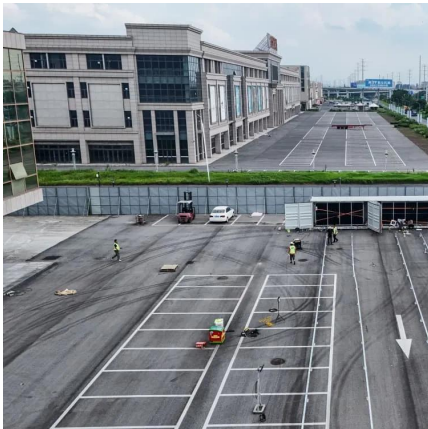


Overview

Try to reset the inverter. Disconnect the battery, wait 30 minutes, and then reconnect. This will reboot the inverter's processor and clear any possible error states. Reconnect Battery and Boot Unit. If it still does not boot there is an internal issue with the inverter.



Pure sine wave inverter intermittent operation



Power Inverter Troubleshooting - Common Problems and How to ...

Check your inverter's specifications or manual to determine if parallel operation is supported and follow the manufacturer's instructions for proper setup and wiring.

[WhatsApp](#)

Troubleshoot 12V 700W/1000W/2000W/3000W Pure Sine Wave Inverters ...

Learn how to troubleshoot common faults with Renogy 12V pure sine wave inverters, including the 700W, 1000W, 2000W, and 3000W models, as well as the new edition models with power ...

[WhatsApp](#)



2. Introduction eRay inverter could supply a steady pure sine wave AC to various load on board, such as coffee machine, microwave, hairdryer or sensitive electronics. It could bring home ...

[WhatsApp](#)

The Upsides and Downsides of Premium Pure Sine Wave Inverters

Premium pure sine wave inverters, often regarded as the best pure sine wave inverter, deliver clean and stable AC power, mimicking the



quality of grid electricity. These ...

[WhatsApp](#)



IBC12-3KW Pure Sine Wave Inverter (High Frequency) User ...

Optional built-in CAN communication function, RV-C protocol, real-time monitoring of inverter operation data, fault status, and adjustment the operating parameters of the inverter are set.

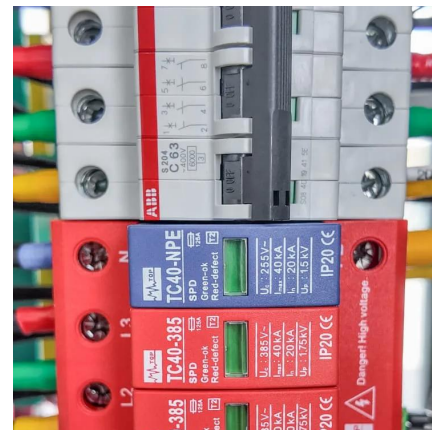
[WhatsApp](#)



[Troubleshoot 12V 700W/1000W/2000W/3000W Pure Sine Wave ...](#)

Use a multimeter to measure the voltage on the input terminal of the inverter. If the input voltage is lower than 10V, disconnect and recharge the battery. After fully charging the battery, ...

[WhatsApp](#)



[3 Steps to Repair Pure Sine Wave Inverter](#)

By following these three essential steps, you can effectively repair your inverter and restore it to optimal functionality. Regular maintenance and timely repairs can significantly ...

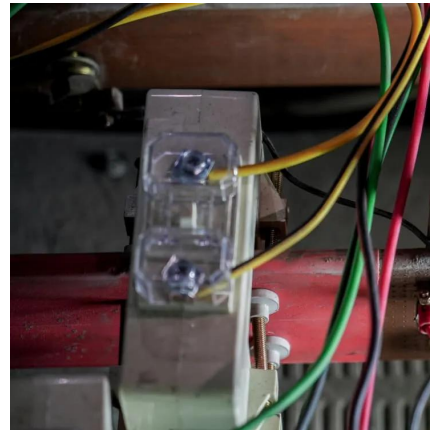
[WhatsApp](#)



Troubleshoot 12V 700W/1000W/2000W/3000W Pure Sine Wave Inverters ...

Use a multimeter to measure the voltage on the input terminal of the inverter. If the input voltage is lower than 10V, disconnect and recharge the battery. After fully charging the battery, ...

[WhatsApp](#)



Pure Sine Wave Inverters / Troubleshooting : Does Not Power Up

Disconnect the battery, wait 30 minutes, and then reconnect. This will reboot the inverter's processor and clear any possible error states. Reconnect Battery and Boot Unit. If it still does ...

[WhatsApp](#)

[6.4. Inverters: principle of operation and parameters](#)

To produce a sine wave output, high-frequency inverters are used. These inverters use the pulse-width modification method: switching currents at high frequency, and for variable periods of time.

[WhatsApp](#)



[Understanding Pure Sine Wave Inverter Operation](#)

A pure sine wave inverter is a device that plays a critical role in our daily life, particularly when it comes to renewables systems. It takes note of the direct current (DC) and ...

[WhatsApp](#)



Contact Us

For catalog requests, pricing, or partnerships, please visit:
<https://www.straightta.co.za>