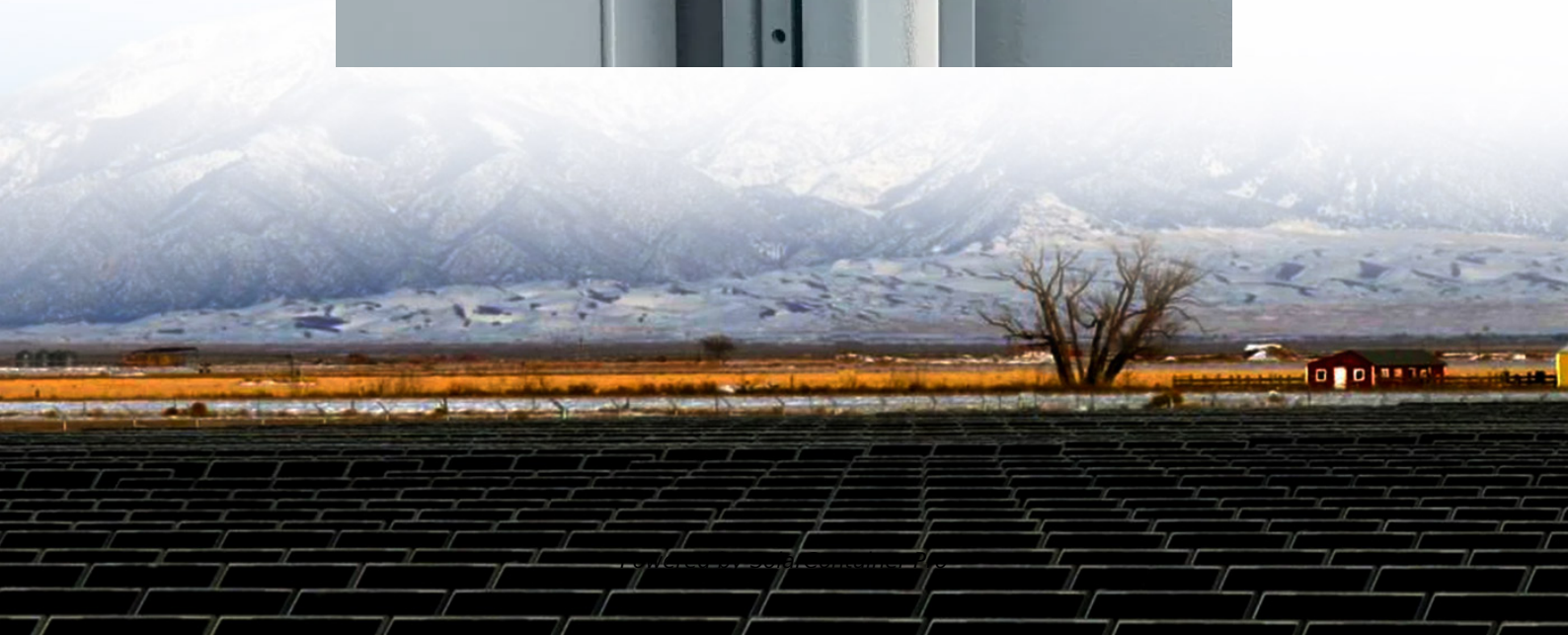


# **Professional communication base station flow battery safety**





## Overview

---

Why do telecom base stations need a battery management system?

As the backbone of modern communications, telecom base stations demand a highly reliable and efficient power backup system. The application of Battery Management Systems in telecom backup batteries is a game-changing innovation that enhances safety, extends battery lifespan, improves operational efficiency, and ensures regulatory compliance.

Why do telecom base stations need backup batteries?

Backup batteries ensure that telecom base stations remain operational even during extended power outages. With increasing demand for reliable data connectivity and the critical nature of emergency communications, maintaining battery health is essential.

Which battery is best for telecom base station backup power?

Among various battery technologies, Lithium Iron Phosphate (LiFePO<sub>4</sub>) batteries stand out as the ideal choice for telecom base station backup power due to their high safety, long lifespan, and excellent thermal stability.

How does a telecom base station work?

Telecom base stations—integral nodes in wireless networks—rely heavily on uninterrupted power to maintain connectivity. To ensure continuous operation during power outages or grid fluctuations, telecom operators deploy robust backup battery systems.

Why do power stations need backup batteries?

These stations depend on backup battery systems to maintain network availability during power disruptions. Backup batteries not only safeguard critical communications infrastructure but also support essential services such as emergency response, mobile connectivity, and data transmission.



What makes a telecom battery pack compatible with a base station?

Compatibility and Installation Voltage Compatibility: 48V is the standard voltage for telecom base stations, so the battery pack's output voltage must align with base station equipment requirements. Modular Design: A modular structure simplifies installation, maintenance, and scalability.



## Professional communication base station flow battery safety

---



### [Radio Base Stations for Secure Communication](#)

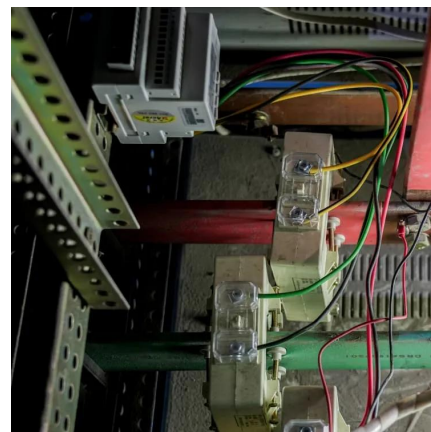
In the world of radio communications, a radio base station plays a vital role in ensuring reliable and seamless communication across a wide area. Whether used in mobile networks, ...

[WhatsApp](#)

### **Optimization Control Strategy for Base Stations Based on Communication**

With the maturity and large-scale deployment of 5G technology, the proportion of energy consumption of base stations in the smart grid is increasing, and there is an urgent need to ...

[WhatsApp](#)



### **Selection and maintenance of batteries for communication base stations**

This paper focuses on the engineering application of battery in the power supply system of communication base stations, and focuses on the selection, installation and maintenance of ...

[WhatsApp](#)



### **Battery Management Systems for Telecom Base Backup Batteries**

To ensure continuous operation during power outages or grid fluctuations, telecom operators deploy robust backup battery systems. However,



the efficiency, reliability, and safety ...

[WhatsApp](#)



### [Optimization of Communication Base Station Battery ...](#)

In the communication power supply field, base station interruptions may occur due to sudden natural disasters or unstable power supplies. This work studies the optimization of ...

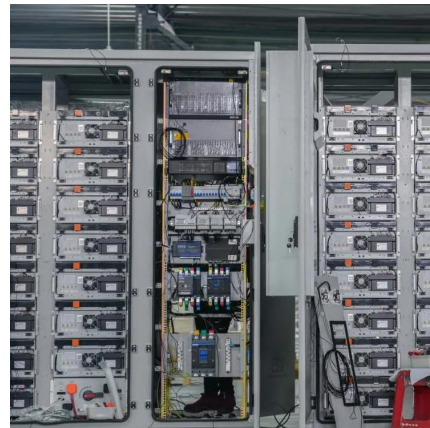
[WhatsApp](#)



### **Communication Base Station Energy Storage Cabinet: The ...**

Meet the communication base station energy storage cabinet - the industrial equivalent of a superhero's utility belt. These unassuming metal cabinets work 24/7 to ensure your TikTok ...

[WhatsApp](#)



### **Selection and maintenance of batteries for communication base ...**

This paper focuses on the engineering application of battery in the power supply system of communication base stations, and focuses on the selection, installation and maintenance of ...

[WhatsApp](#)







## Lithium-ion Battery For Communication Energy Storage System

4. Larger and larger demand for batteries in the communications field In recent years, operators in several countries around the world have stepped up the deployment of 5G ...

[WhatsApp](#)



## From communication base station to emergency power supply ...

Once the mains is interrupted, the battery pack is discharged immediately to ensure the normal operation of the base station equipment and ensure the continuity of the communication network.

[WhatsApp](#)

## What Are the Critical Aspects of Telecom Base Station Backup ...

Telecom base station backup batteries are essential for ensuring uninterrupted communication by providing reliable, long-lasting power during outages. Critical aspects ...

[WhatsApp](#)



## US Communication Base Station Li-ion Battery Market: Unveiling

US Communication Base Station Li-ion Battery Market Size And Forecast US Communication Base Station Li-ion Battery Market size was valued at USD 5.2 Billion in 2024 ...

[WhatsApp](#)



### **(PDF) Dispatching strategy of base station backup power supply**

Overall, this study provides a clear approach to assess the environmental impact of the 5G base station and will promote the green development of mobile communication facilities.

[WhatsApp](#)



### **Understanding Backup Battery Requirements for Telecom Base Stations**

Telecom base stations require reliable backup power to ensure uninterrupted communication services. Selecting the right backup battery is crucial for network stability and ...

[WhatsApp](#)

### **[Battery technology for communication base stations](#)**

In order to ensure the reliability of communication, 5G base stations are usually equipped with lithium iron phosphate cascade batteries with high energy density and high charge and ...

[WhatsApp](#)





## Contact Us

---

For catalog requests, pricing, or partnerships, please visit:  
<https://www.straighta.co.za>