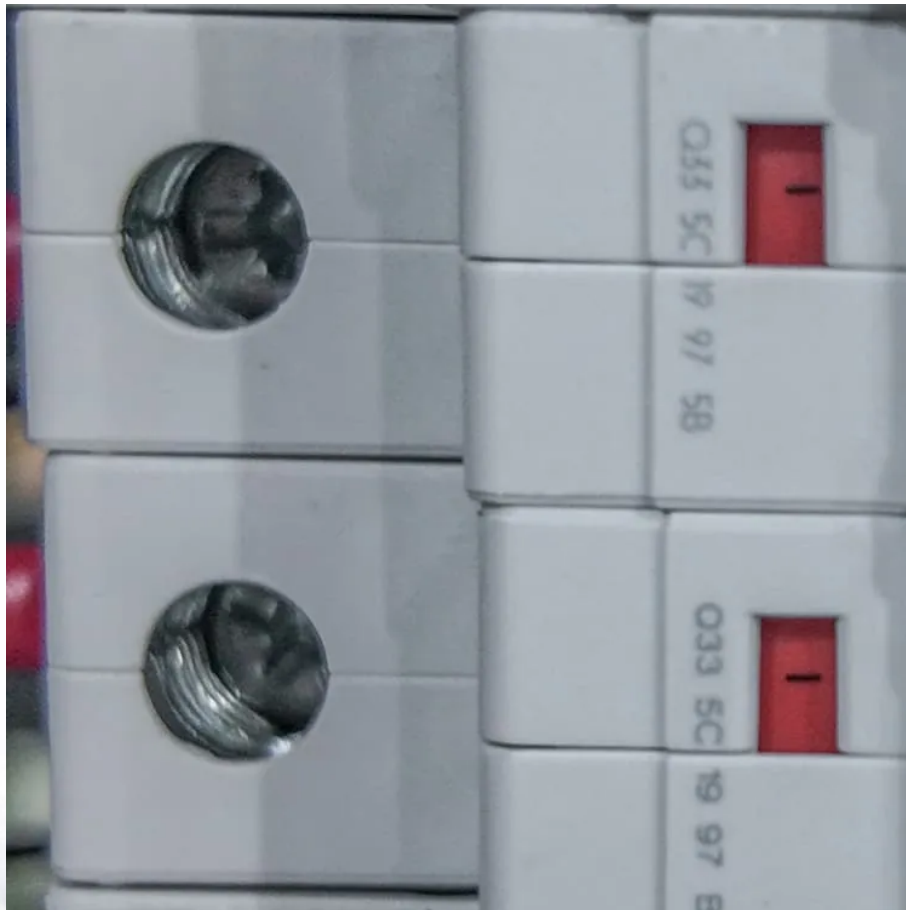


Pre-qualification of communication base station inverter





Overview

Why is base station performance important?

Base station (BS) performance is vital for delivering expected quality of experience to end users. To ensure this, it is important that the base station conformance criteria is met and that they fulfill the requirements in the region in which they operate. These criteria are specified by the mobile communication standardization body 3GPP.

Does a “modular approval” transmitter require certification?

Although the host device integrating the “modular approval” transmitter does not require certification, the manufacturer still must account for all FCC / ISED compliance requirements, including electromagnetic compatibility (EMC) requirements for the digital circuitry and transmitter radio requirements.

Can a base station perform 3GPP radiated conformance testing over-the-air?

With the evolution of base stations, it is not only necessary to be able to perform 3GPP conducted conformance testing in a conducted manner, as well as radiated conformance testing over-the-air. Rohde & Schwarz offers a broad solutions portfolio for base station conformance testing.

How do host devices comply with RF exposure and transmission power requirements?

The host device manufacturer then needs to make sure that compliance to RF exposure and transmission power requirements have been maintained after integration of the radio module into the host device. As a minimum, EMC requirements need to be tested on the host device along with a representative re-test of radiated spurious emissions (RSE).

Do base stations need to pass conformance tests?

Base stations need to pass conformance tests in the region where they will be installed before they can start operation in the field. For base stations the



3GPP specification TS 38.141 covers transmitter and receiver characteristics of base stations as well as receiver performance under noise and fading conditions.



Pre-qualification of communication base station inverter



Contractor Health, Safety & Environment Management System

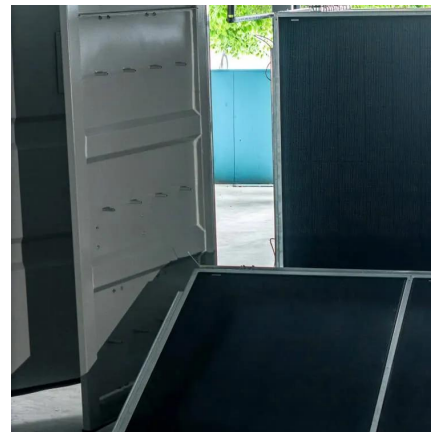
Contractor Health, Safety & Environment (HSE) Competence Assessment Contractors, suppliers and others are key to our business performance, which includes our HSE performance. The ...

[WhatsApp](#)

Prequalification Processes (Clients Demanding of Potential Suppliers)

It includes the usual procedures for registration and qualification of suppliers such as the supplier registration system or prequalification system for suppliers, which provides the ...

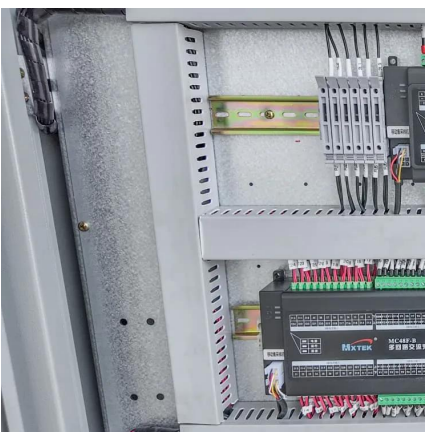
[WhatsApp](#)



Installation and commissioning of energy storage for ...

Considering the exponential increase in mobile traffic, requiring denser cellular access networks, the use of renewable energy (RE) to power base stations (BSs) may contribute to reduce the ...

[WhatsApp](#)



Invitation for Pre-Qualification for the Supply and Installation of

Federal Airports Authority of Nigeria (FAAN) invites competent and reliable companies to submit their technical documents for the Supply



and Installation of Base ...

[WhatsApp](#)



[3GPP base station conformance testing](#)

Base station (BS) performance is vital for delivering expected quality of experience to end users. To ensure this, it is important that the base station conformance criteria is met and that they ...

[WhatsApp](#)



[Communication Base Station Energy Solutions](#)

Due to harsh climate conditions and the absence of on-site personnel to maintain fuel generators, the company required a reliable solution to ensure the base station's stable operation and ...

[WhatsApp](#)



Communication Base Station Power Quality , Huijue Group E-Site

Did you know that communication base station power quality issues account for 23% of network downtime globally? As 5G densification accelerates, why do 68% of telecom operators still ...

[WhatsApp](#)





[Communication Base Station Backup Power Selection Guide](#)

When a typhoon knocks out grid power across Southeast Asia, how do operators ensure communication base stations keep 5G networks online? The answer lies in strategic backup ...

[WhatsApp](#)



Optimised configuration of multi-energy systems considering the

Additionally, exploring the integration of communication base stations into the system's flexibility adjustment mechanisms during the configuration is important to address the ...

[WhatsApp](#)



[Integrated Communication Base Station](#)

Jinhua ZhongXing Communications designs integrated communication base stations featuring ?base station steel frameworks? for structural integrity and ?base station power systems? with ...

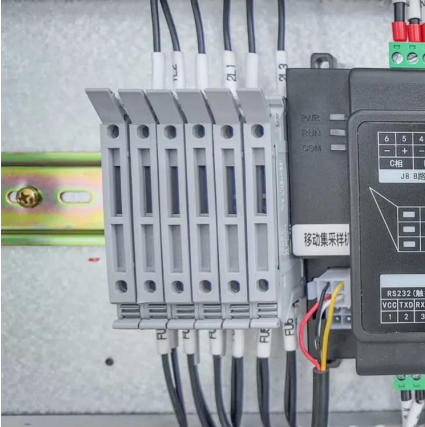
[WhatsApp](#)



Optimizing the power supply design for communication base stations

Comprehensively evaluate various factors and select the most suitable power system design scheme to ensure the stable and reliable operation of the base station.

[WhatsApp](#)



Contact Us

For catalog requests, pricing, or partnerships, please visit:
<https://www.straighta.co.za>