

Power generation of 1 square meter of solar panels





Overview

Let's cut through the solar jargon - when we talk about solar panel productivity, we're essentially measuring how well these silicon rectangles turn sunshine into usable electricity. For 1m^2 of modern photovoltaic panels, you're looking at a daily output ranging from 0.3 kWh to 1.5 kWh. How much energy does a solar panel produce per square meter?

Given Egypt's high solar irradiance levels, which can reach up to 2200 kWh/m^2 annually, the potential power output per square meter of a solar panel can be quite significant. For a solar panel with an efficiency of 18%, this translates to an annual energy production of about 396 kWh/m^2 .

What is solar panel watts per square meter (W/M)?

Solar panel watts per square meter (W/m) measures the power output of a solar panel based on its size. Compare solar panels to see which generates most electricity per square meter. A higher W/m value means a solar panel produces more power from a given area. This can help you determine how many solar panels you need for your energy needs.

What is solar panel efficiency?

Solar panel efficiency is crucial for a solar power system's success. High-efficiency panels convert more sunlight into electricity, boosting overall output. To measure this efficiency, use solar panel Watts per square meter (W/m). This metric shows how much power a solar panel produces per square meter of surface area under standard conditions.

What is a solar power per square meter calculator?

It also includes wiring, inverter, charge controller, and battery bank (if used). A solar power per square meter calculator takes details regarding these factors and then gives the accurate output generated by the solar panel per square meter. After this, it's time to learn about solar panel output calculators.



How many watts can a solar panel generate?

This means that for every square meter of this solar panel, you can generate 180 watts of power under optimal conditions. Panel Orientation and Tilt: The angle at which the panel is installed can significantly affect its efficiency. Solar panels should be oriented to face the sun as directly as possible throughout the day.

How do you measure solar panel efficiency?

To measure this efficiency, use solar panel Watts per square meter (W/m). This metric shows how much power a solar panel produces per square meter of surface area under standard conditions. By knowing W/m, you can: Install solar panels and maximize your energy output! What is Solar Panel Efficiency?



Power generation of 1 square meter of solar panels



How Much Electricity Can 1 Square Meter of Solar Panels ...

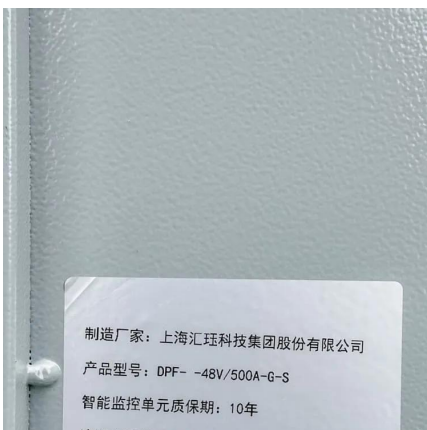
The Basics of Solar Panel Energy Output Let's cut through the solar jargon - when we talk about solar panel productivity, we're essentially measuring how well these silicon rectangles turn ...

[WhatsApp](#)

[How To Calculate Solar Panel Output? - Glyde Solar](#)

4.What is a solar panel output tester? Set your multimeter to the DC' amps' preset and place your solar panel in direct sunshine to evaluate its amperage output. In Square Foot, Modern ...

[WhatsApp](#)



Solar Energy Per Square Meter: How Much Power Can You Get?

Solar energy per square meter refers to the amount of solar radiation impacting a specific area, measured in kilowatts per square meter (kW/m^2). This measurement is a key ...

[WhatsApp](#)

[How Many kWh Does A Solar Panel Produce Per Day?](#)

Quick outtake from the calculator and chart: For 1 kWh per day, you would need about a 300-watt solar panel. For 10kW per day, you would need



about a 3kW solar system. If we know both the ...

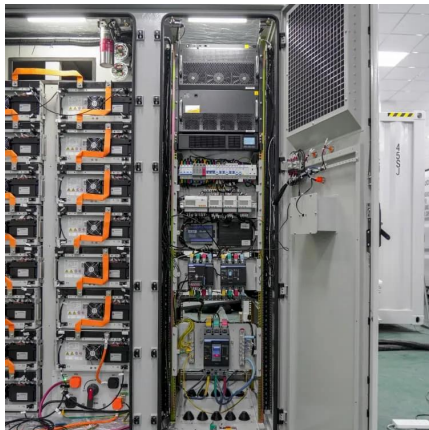
[WhatsApp](#)



How much does rooftop solar power generate per square meter?

1. Rooftop solar power commonly generates between 150 to 250 watts per square meter, influenced by factors such as location and technology. 2. The efficiency of the solar ...

[WhatsApp](#)



How Much Energy Do Solar Panels Produce Per Square Foot

The average solar panel generates between 10 and 20 watts of power per square foot, depending on the type and efficiency of the panel. Factors such as location, panel ...

[WhatsApp](#)



Solar Panel Power Per Square Meter: How to Calculate Efficiency

Solar panel efficiency is a measure of how much sunlight a solar panel can convert into usable electricity. It is expressed as a percentage and indicates the proportion of sunlight ...

[WhatsApp](#)

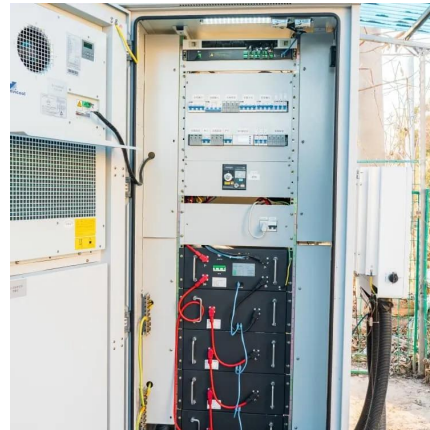




Solar Panel Output per Square Meter: Efficiency Factors & Future ...

Solar panels have become a cornerstone of renewable energy, but many wonder: How much power can a single square meter of solar panels actually produce? Let's break down the ...

[WhatsApp](#)



How Much Electricity Can 1 Square Meter of Solar Panels ...

For 1m² of modern photovoltaic panels, you're looking at a daily output ranging from 0.3 kWh to 1.5 kWh. But why such a wide range? Stick with me - this solar story has more twists than a ...

[WhatsApp](#)

[How much solar power can generate in 4 square meters](#)

To estimate how much solar power can be generated in a 4 square meter area, several factors come into consideration. 1. Average solar panel efficiency ranges from 15% to ...

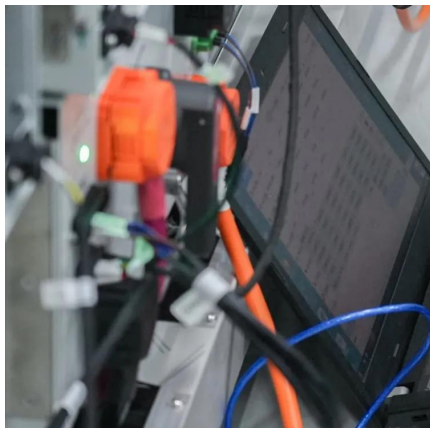
[WhatsApp](#)



How much electricity does solar power generate per square meter

The average electricity generation per square meter from solar technology plays a critical role in determining its widespread adoption. By optimizing factors such as panel ...

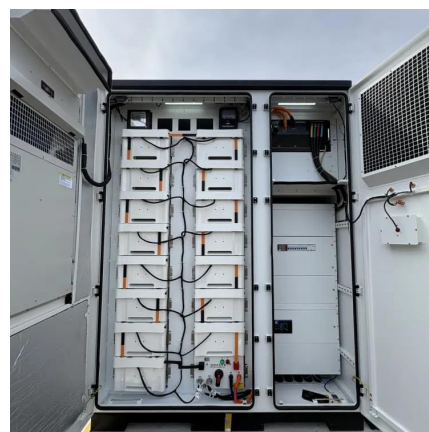
[WhatsApp](#)



How much electricity does a square meter of solar panel produce?

1. A square meter of solar panel generates approximately 150 to 200 watts of electricity under ideal conditions, depending on factors such as efficiency and geo...

[WhatsApp](#)



[Solar Panel Watts Per Square Meter Explained](#)

To measure this efficiency, use solar panel Watts per square meter (W/m). This metric shows how much power a solar panel produces per square meter of surface area under standard conditions.

[WhatsApp](#)



Contact Us

For catalog requests, pricing, or partnerships, please visit:
<https://www.straighta.co.za>