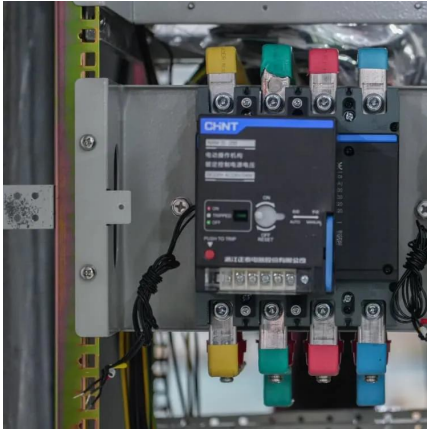


Power Station in Iceland





Power Station in Iceland



[Nesjavellir Geothermal Power Station](#)

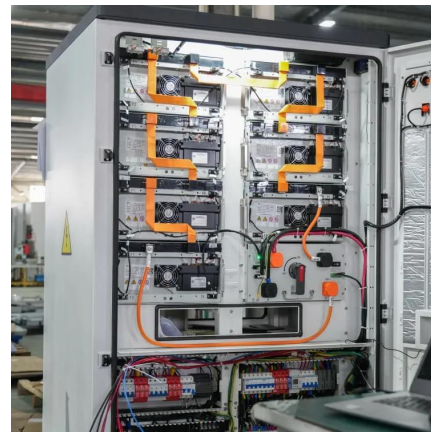
The Nesjavellir Geothermal Power Station (Icelandic: Nesjavallavirkjun, Icelandic pronunciation: ['n?:sja?vatla?v?r?c?n]) is the second-largest geothermal power station in Iceland. The facility is ...

[WhatsApp](#)

[Búrfell hydroelectric power station](#)

The Búrfell hydroelectric power plant (Búrfellsstöð or Búrfellsvirkjun in Icelandic) is a run-of-river hydroelectric power plant located in the Þjórsá valley in southwest Iceland. It is operated by ...

[WhatsApp](#)



Geothermal Gas Emission From Hellisheiði and Nesjavellir ...

Since the commission of Hellisheiði Power Plant in 2006 the characterizing foul smell of H₂S is much more frequent in Reykjavík (Figure 1). As a result new regulation on atmospheric ...

[WhatsApp](#)

Iceland's Most Surprising Tourist Attraction? Power Plants.

Geothermal and hydroelectric power plants, which supply the island nation with energy, fuel many of the stops on travelers' itineraries--and



have themselves evolved into ...

[WhatsApp](#)



List of power stations in Iceland

Over 80% of electricity in Iceland is generated in hydroelectric power stations. The hydroelectric power stations, historically all run by Landsvirkjun, are central to the existence of Iceland as an ...

[WhatsApp](#)



[Geothermal Exhibition at Hellisheiðarvirkjun](#)

Geothermal Exhibition at Hellisheiðarvirkjun The Geothermal Exhibition is situated inside of Iceland's largest geothermal power plant: the Hellisheiði Geothermal ...

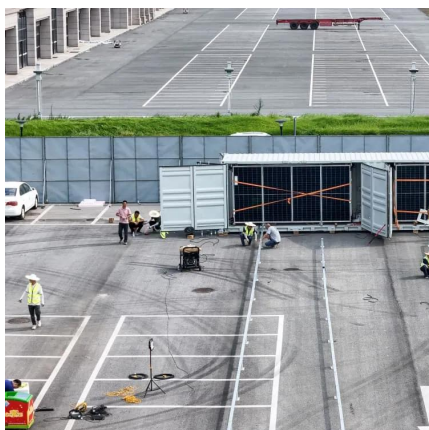
[WhatsApp](#)



Svartsengi power station

Svartsengi power station provides hot water for the district heating system of the entire Reykjanes Peninsula, including Keflavík, Njarðvík, Vogar, Garður, Sandgerði and Grindavík - more than ...

[WhatsApp](#)





Contact Us

For catalog requests, pricing, or partnerships, please visit:
<https://www.straighta.co.za>