

# **Power Dump Energy**





## Overview

---

Dump Power refers to the surplus electricity generated by renewable energy resources, such as wind or solar power, that exceeds the immediate demand of the grid. This excess energy needs to be managed or stored to maintain the stability of the energy grid. What is dump energy?

What you call dump energy is, in my understanding, electrical power generation in a regional area, e.g. a low voltage grid area, where the power cannot be used in these moment and where the grid is on its limits (Voltage, Frequency or degree of capacity for the grid components) to receive the power.

What is dump power?

Dump power is surplus electric power that is in excess of existing local load requirements and that is made available because of overabundance of stored water in a hydroelectric plant.

What is a dump load?

Dump or diversion loads are a convenient way to divert or shunt excess electrical energy that could otherwise damage a renewable energy system once the batteries are full. Then anything that has a resistive element is great as a dump load as they can take a lot of electric power.

What causes dump power?

Dump power is surplus electric power that is in excess of existing local load requirements and that is made available because of overabundance of stored water in a hydroelectric plant.

Do I need to dump energy?

There is no need to dump energy. They just turn the power plant down. Same as if you are heating your house and it's too hot, you just turn the heater down. This all happens automatically anyway, it's normally a legal



requirement when connecting a power plant to the grid that it can be turned down if needed.

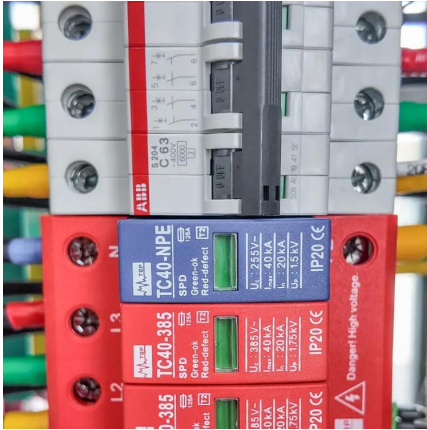
How much power does a dump load take?

This means that the excess power that is sent to the dump load may be 10w or 25w or 150w or 300w or 1000w anything in between depending on the size of the dump load The system quickly and automatically decides how much power needs to be dumped at any one instant. So the dump load may not be dumping 500watt continuously.



## Power Dump Energy

---



### OFF-GRID ENERGY COMMUNITY: Understanding the Essential Dump ...

Excess power generated by your independent power system warms the water in the tank, reducing the grid power you use. DC water heating is a relatively new approach, but ...

[WhatsApp](#)

### Optimal allocation and sizing of PV/Wind/Split-diesel/Battery hybrid

Optimal allocation and sizing of PV/Wind/Split-diesel/Battery hybrid energy system for minimizing life cycle cost, carbon emission and dump energy of remote residential building

[WhatsApp](#)



### How is the operation and maintenance of civil engineering dump ...

At the heart of civil engineering lies the integration of various energy systems, one of which is dump energy. This concept refers to the surplus energy generated during the ...

[WhatsApp](#)



### Excess electricity problem in off-grid hybrid renewable energy ...

Excess electricity, surplus power, or dumped energy refers to the unused portion of energy in hybrid renewable energy systems (HRESSs), which



can significantly impact the ...

[WhatsApp](#)



### **What are the significance of dump energy in Integrated Renewable Energy**

What you call dump energy is, in my understanding, electrical power generation in a regional area, e.g. a low voltage grid area, where the power cannot be used in these moment and ...

[WhatsApp](#)



### **[Applications of Water Injection Using Power Dump Flood](#)**

This paper aims to share the experience and learnings of improve oil production and power optimization by innovative power dump flood technology, which is used for water injection at ...

[WhatsApp](#)



### **[How diversion charge controllers and dump loads work](#)**

Here at Leading Edge Turbines one of the most frequent technical questions that we get asked is about how diversion controllers and dump loads work. After all it seems a little counter intuitive ...

[WhatsApp](#)





## How is the operation and maintenance of civil engineering dump energy

At the heart of civil engineering lies the integration of various energy systems, one of which is dump energy. This concept refers to the surplus energy generated during the ...

[WhatsApp](#)



## ELI5: why can't a power plant "dump" extra unused electricity?

The only way to "dump" the energy is to attach more load to dump it into. This could be in the form of batteries, pumped storage, hydrogen generators or anything else.

[WhatsApp](#)

## Contact Us

For catalog requests, pricing, or partnerships, please visit:  
<https://www.straighta.co.za>