

Power Base Station Batteries





Power Base Station Batteries



Elisa and Alcom to power base station batteries with solar energy

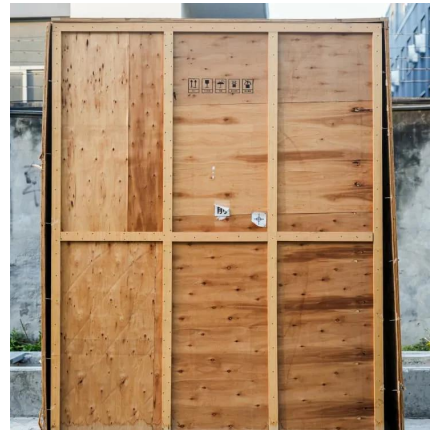
Elisa's Distributed Energy Storage (DES) solution, powered by AI/ML, uses the flexibility of backup power batteries to control the electricity supply in thousands of base ...

[WhatsApp](#)

[Base batteries not charging . SimpliSafe Support Home](#)

If your Base Station still says it isn't charging with new NiMH batteries, I would reach out to our Support team, as we may need to replace the Base Station's power adapter ...

[WhatsApp](#)



[Overview of Telecom Base Station Batteries](#)

Despite shortcomings such as short cycle life, low energy density, susceptibility to theft, and ecologically unfriendliness, lead-acid batteries are widely applied in telecom power supplies ...

[WhatsApp](#)



[Battery storage power station - a comprehensive guide](#)

Battery storage power stations store electrical energy in various types of batteries such as lithium-ion, lead-acid, and flow cell batteries.



These facilities require efficient operation and ...

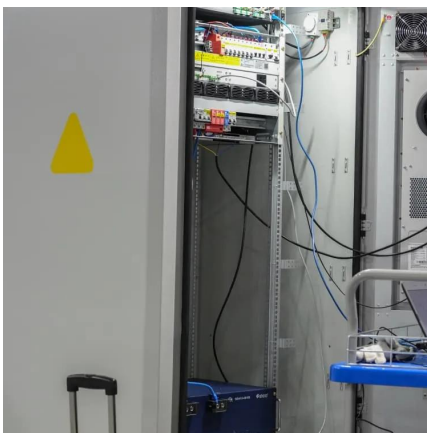
[WhatsApp](#)



What is a base station energy storage battery? , NenPower

Base station energy storage batteries offer vital support to enhance the stability of both telecommunications and electrical grids. During power outages or disruptions, these ...

[WhatsApp](#)



Lithium ion battery for telecom industry/towers/backup systems

The construction of mobile communication base stations is an important part of social security. The stability of communication base stations is related to national and regional issues, so ...

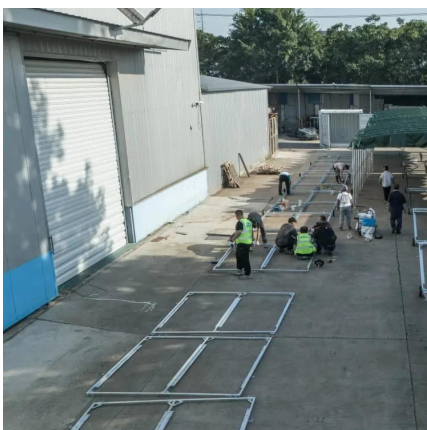
[WhatsApp](#)



[5G Micro Base Station Lithium Battery Backup](#)

With over 3,000 charge cycles, this compact power solution is engineered for long-term value and field durability. Compatible with micro cell base stations, this lithium battery supports the ...

[WhatsApp](#)





Energy Management of Base Station in 5G and B5G: Revisited

Since mmWave base stations (gNodeB) are typically capable of radiating up to 200-400 meters in urban locality. Therefore, high density of these stations is required for actual 5G deployment, ...

[WhatsApp](#)



[Battery storage power station - a comprehensive guide](#)

Battery storage power stations store electrical energy in various types of batteries such as lithium-ion, lead-acid, and flow cell batteries. These facilities require ...

[WhatsApp](#)



Contact Us

For catalog requests, pricing, or partnerships, please visit:
<https://www.straighta.co.za>