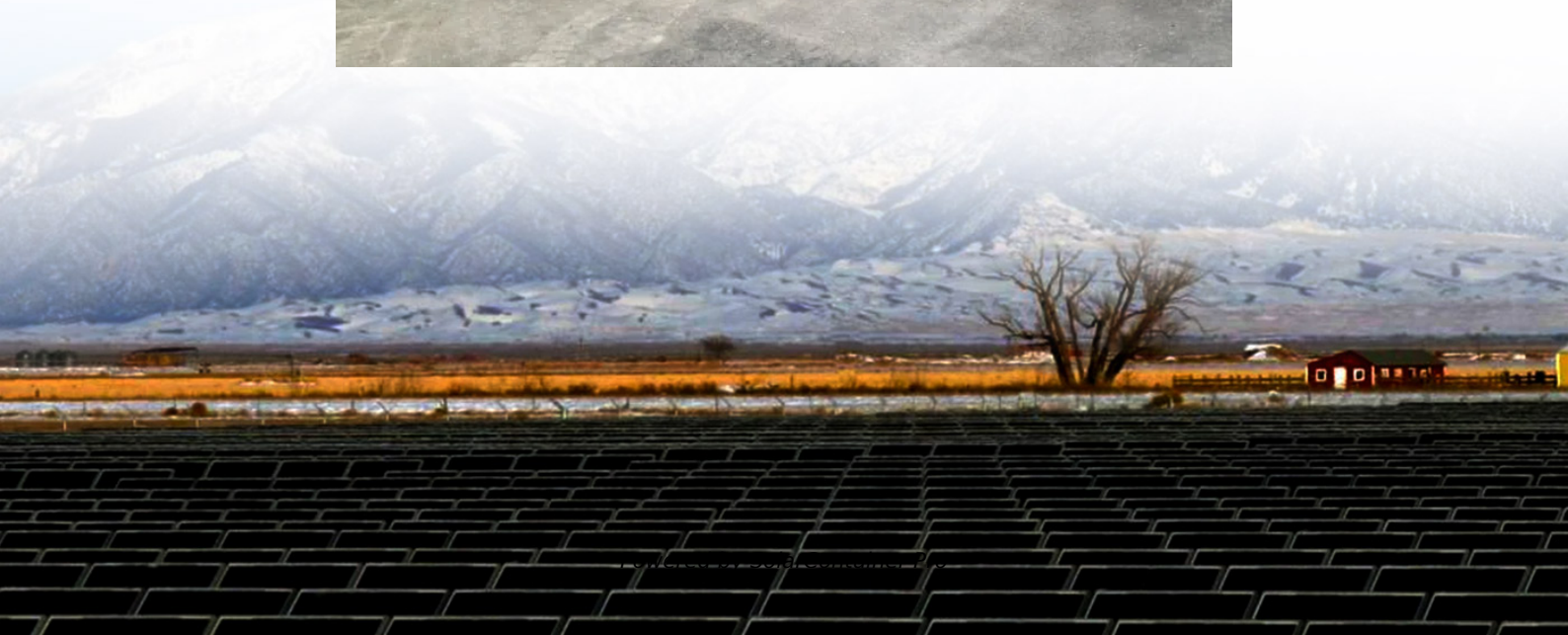


# **Portable power supply keeps discharging**





## Overview

---

What is the difference between charging and discharging a laptop?

Charging and discharging are opposites. When you connect a laptop to a power source, it charges. Conversely, when you disconnect it from a power source, it starts to discharge because the laptop uses the battery to run its operations.

Why does my laptop start to discharge after disconnecting?

When you disconnect a laptop from a power source, it will discharge because the laptop is using the battery to run its operations. This is a common occurrence and is not necessarily an error. A lot of people do not understand the term 'discharging' in the context of a laptop.

Why is my laptop charging port not working?

Usually, the cause of this problem is associated with the laptop charger, laptop battery, and power supply issues. The issues can also be with your wall socket. Apart from that, your laptop charging port might not be working fine. If the Charger of your Windows laptop keeps connecting and disconnecting, follow these solutions to fix the issue:.

Why does my Charger keep disconnecting?

Problems with the power supply can also lead to a charger that keeps disconnecting. Using an unstable power source or an incompatible charger can disrupt the charging process. For instance, plugging your charger into a faulty outlet or a power strip overloaded with devices can result in an inconsistent power supply.

Why is my portable charger not working?

Before diving into fixes, let's take a look at the typical reasons a portable charger not working. Here are the most common causes: Sometimes, the lithium battery inside degrades or becomes unstable—especially if it's been



overcharged, deeply discharged too often, or exposed to extreme temperatures. Some signs of battery damage include:.

How do I know if my portable charger is bad?

Check that the charging cable is properly connected. Make sure that there are no wiggly movements. Properly clean the charging ports. If the portable charger becomes very hot, it's possible to trigger a built-in safety mechanism that automatically stops the power bank. The power bank is very old and may have reached its battery lifespan.



## Portable power supply keeps discharging

---



### [How to Fix a Power Bank That Keeps Shutting Down](#)

Start by verifying the charger itself. A wall adapter that delivers insufficient or unstable voltage will cause the power bank's protection circuit to shut off charging. Try testing ...

[WhatsApp](#)

### [Laptop charger keeps connecting and disconnecting](#)

If your laptop charger keeps connecting and disconnecting, the solutions provided in this article will help you. This issue can damage your laptop battery; hence, you should not ...

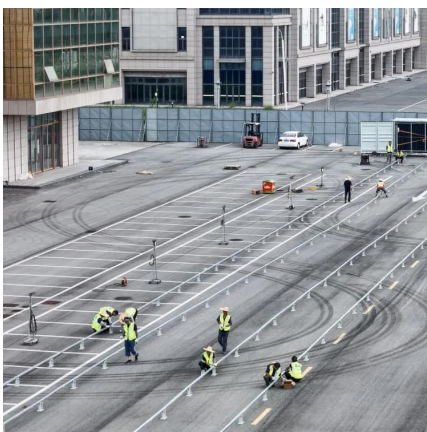
[WhatsApp](#)



### [Generator Battery Dead \(It's Cause & Ways To Recharge\)](#)

The easiest way to start a generator that has a dead battery is to use a portable power supply, The supercapacitor of a portable power supply can stand in the gap, solving your generator ...

[WhatsApp](#)



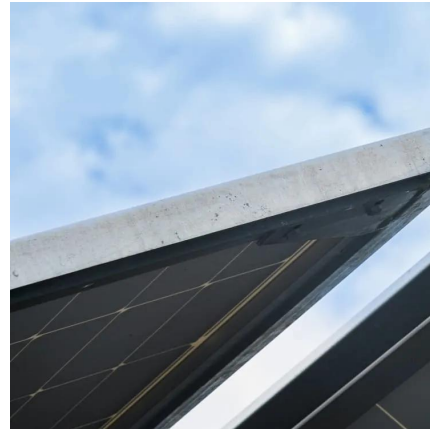
## Laptop Plugged IN Discharging(Fixed)

Why Is My Laptop Plugged IN But Discharging? A laptop that is plugged in may discharge for any number of reasons. The most common cause is dead or defective batteries. Laptop batteries ...





[WhatsApp](#)



### [EcoFlow DELTA 3 Portable Power Station\\_User Manual](#)

EcoFlow DELTA 3 (hereinafter referred to as "DELTA 3", or "the power station") is a power station with a LiFePO<sub>4</sub> battery and a capacity of 1024Wh. It has ...

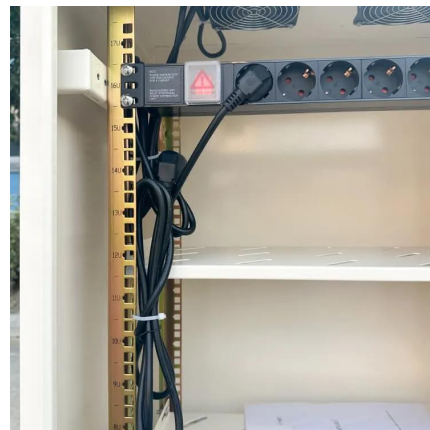
[WhatsApp](#)



### [EcoFlow DELTA Pro 3 Portable Power Station\\_User ...](#)

EcoFlow DELTA Pro 3 (hereinafter referred to as the "DELTA Pro 3", or "the power station") is a power station with a LiFePO<sub>4</sub> battery and a capacity of ...

[WhatsApp](#)



### **What To Do if Your Power Bank Keeps Disconnecting and Turning Off**

One of the more common issues power bank owners have, is that their device keeps disconnecting and turning off after 30 seconds or so. This can be quite frustrating, ...

[WhatsApp](#)





### [Here's why your laptop charger keeps connecting and ...](#)

The reason why your laptop keeps connecting or disconnecting is because of some incorrect power setting, faulty charger, or cable. A loose charging port can also result in ...

[WhatsApp](#)



### **How to store and how often to charge my power station if I don't ...**

It is recommended to operate and recharge it if necessary every three months to keep the power station active. Like a car battery, you should warm up the battery every so often to keep it ...

[WhatsApp](#)



### [Why does my portable charger keep turning off](#)

There are two different situations in which you might find that your portable charger is turning off. These different situations point to different causes, so it is important to figure out which one ...

[WhatsApp](#)



### **Can I keep my power station (unit, battery) plugged in after a full**

All of our power stations are equipped with a Battery Management System (BMS) to prevent it from overcharging. To maintain and prolong the health of your power station, we do suggest ...

[WhatsApp](#)



### [An Overview of Portable Power Stations & How They Work](#)

To keep the battery healthy, regularly charge and discharge it, especially if stored for long periods. Q: Are there environmentally friendly options for charging a portable power ...

[WhatsApp](#)



### **Why Charger Keeps Disconnecting? Fix in 4 Steps , UGREEN EU**

Why charger keeps disconnecting? This article will explore the common causes behind this annoying problem, provide troubleshooting tips easy to follow, and methods to ...

[WhatsApp](#)

### **Portable Charger Not Working? How to Tell If It's Dead or Fixable**

Portable charger not working and unresponsive? If it completely stopped working, this guide helps you figure out if it's worth saving--or if it's time to let go.

[WhatsApp](#)





### **How to Troubleshoot Your Laptop Charger Keep Going On and Off?**

If you are experiencing issues where your laptop and charger keep going on and off, it can be quite frustrating. However, there are several solutions that you can try to resolve ...

[WhatsApp](#)

## **Contact Us**

---

For catalog requests, pricing, or partnerships, please visit:  
<https://www.straighta.co.za>