

Polish BMS lithium battery





Overview

What is a BMS for lithium-ion batteries?

A BMS for lithium-ion batteries acts as the "brain" of the battery pack, continuously monitoring, protecting, and optimizing performance to ensure safe operation and maximum lifespan. Understanding how BMS technology works is essential for anyone involved with lithium-ion applications.

Does Europe run on Polish lithium-ion batteries?

We are pleased to present our report titled "Europe Runs on Polish Lithium-Ion Batteries: The Potential of the Battery Sector in Poland and the CEE Region". This report was developed with substantial support from market leaders and stakeholders in Poland and Slovakia.

Are lithium-ion batteries safe to operate without BMS protection?

A: Operating lithium-ion batteries without proper BMS protection is extremely dangerous and not recommended. While basic protection circuits exist, they lack the comprehensive monitoring and management capabilities needed for safe operation.

Do batteries need BMS protection?

While basic protection circuits exist, they lack the comprehensive monitoring and management capabilities needed for safe operation. Even small consumer batteries benefit from BMS protection against overcharge, over-discharge, and thermal issues.

How accurate is a battery management system (BMS)?

The BMS employs multiple algorithms including coulomb counting, voltage-based estimation, and advanced techniques like Kalman filtering to provide precise charge level information. SOC accuracy directly impacts user experience and battery protection. Overestimation can lead to over-discharge, while underestimation reduces usable capacity.



Where does POSCO PLSC recycle lithium-ion batteries?

In Bukowice, near Brzeg Dolny, POSCO PLSC operates a lithium-ion battery recycling plant in collaboration with SungEel HiTech. Dedicated to processing waste from battery factories and using Li-ion batteries, POSCO PLSC significantly contributes to sustainable battery production.



Polish BMS lithium battery



[Battery Management Systems , Lithium BMS Design](#)

Voltaplex is proud to design and manufacture battery management systems (BMS) that optimize lithium-ion battery packs' safety, reliability, and performance. We engineer our solutions for ...

[WhatsApp](#)

A Comprehensive Guide to 48V Lithium Battery BMS Technology

By integrating a comprehensive BMS, these issues can be mitigated, ensuring the longevity and performance of lithium battery-powered systems. The 48V Lithium Battery BMS technology is ...

[WhatsApp](#)



VEVOR 24V 100Ah LiFePO4 Lithium Battery Bluetooth Rechargeable Battery

This 24V lithium battery is ideal for building a dependable backup energy system Multiple Protection: 4000+ cycles ensure reliable performance you can count on. This 24V trolling ...

[WhatsApp](#)

Decoding BMS: Your Guide to Choosing the Perfect Battery ...

Introduction: Choosing the right Battery Management System (BMS) is crucial for the optimal performance and safety of your lithium-



ion battery pack. In this guide, we'll delve into the key ...

[WhatsApp](#)



Poland: why is it the new European epicenter of battery factories?

Meanwhile, located in Jawor, Mercedes-Benz Manufacturing Poland manufactures lithium-ion batteries for hybrid and electric vehicles. Powered entirely by renewable energy ...

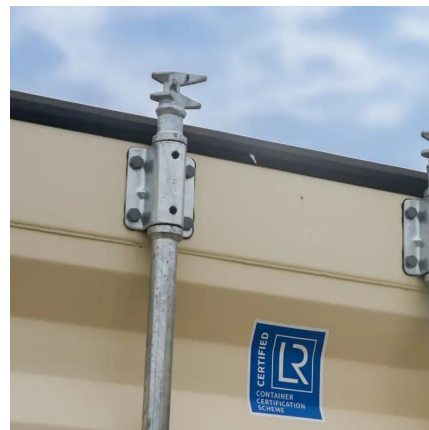
[WhatsApp](#)



[Lithium Battery? Battery Management System \(BMS\) Explained](#)

What is a Battery Management System (BMS)? BMS is the abbreviation of Battery Management System. It is a battery management device mainly used to monitor, protect and manage the ...

[WhatsApp](#)



Polish BMS Battery Management Monitoring System Architecture ...

As Poland accelerates its transition to renewable energy, advanced Battery Management Systems (BMS) have become critical for optimizing energy storage performance. This article ...

[WhatsApp](#)





How Lithium-ion Battery Management Systems Enhance Battery ...

Discover how Battery Management Systems (BMS) play a crucial role in enhancing the performance, safety, and efficiency of lithium-ion batteries in various applications, including ...

[WhatsApp](#)



Resetting the Balance: How to Reset a Lithium Battery BMS

What is a BMS? The Battery Management System (BMS) is a critical component in lithium battery technology. It acts as the central controller that manages and monitors the ...

[WhatsApp](#)

Contact Us

For catalog requests, pricing, or partnerships, please visit:
<https://www.straighta.co.za>