

# **Photovoltaic solar panels and wetland park**





## Overview

---

Are solar panels a wetland impact?

In the past, the posts/pilings that are used to install solar arrays have not been considered a wetland impact that would require compensatory mitigation under the WCA. The reality is that solar arrays bring wetlands into non-aquatic use and may, or may, not negatively impact the wetland's quality or function.

Should solar panels be installed on posts/pilings in wetlands?

To help local governments evaluate the potential impacts to a wetland's function and value, the Minnesota Board of Water and Soil Resources (BWSR) issued guidance that provides a suggested approach for evaluating projects when they involve the installation of solar panels on posts/pilings in wetlands.

Should solar arrays be located near wetlands?

Historically, solar arrays have been sited within or near farmed wetlands (wetlands that are plowed). If solar developers restore the disturbed wetlands following construction, such as with native plant species, the function and value may actually improve, despite the shading from the solar arrays.

Do solar arrays affect wetlands?

The reality is that solar arrays bring wetlands into non-aquatic use and may, or may, not negatively impact the wetland's quality or function. Historically, solar arrays have been sited within or near farmed wetlands (wetlands that are plowed).

Do solar panels delay bloom in a dryland agrivoltaic ecosystem?

Partial shading by solar panels delays bloom, increases floral abundance during late-season for pollinators in a dryland, agrivoltaic ecosystem. Scientific Reports 11:7452. DOI: 10.1038/ s41598-021-86756-4 Graitson, E., S. Ursenbacher, and O. Lourdais. 2020.



Do ground-mounted solar parks promote land surface cool islands?

Ground-mounted photovoltaic solar parks promote land surface cool islands in arid ecosystems. Renewable and Sustainable Energy Transition 1:10008. DOI:10.1016/j.rset.2021.100008 Hall, P.K., W. Morgan, and J. Richardson. 2022. Land use conflicts between wind and solar renewable energy and agricultural uses.



## Photovoltaic solar panels and wetland park

---



[Which wetland has solar panels installed? .  
NenPower](#)

The integration of solar panels within wetland locations can serve dual purposes: generating renewable energy while maintaining critical ecological roles. This symbiotic ...

[WhatsApp](#)

### [Conservation Considerations for Solar Farms](#)

Introduction Ground-based, utility-scale solar panel installations used for electricity generation of 1 MW or greater are commonly referred to as 'solar farms' (US Energy Information ...

[WhatsApp](#)



### **Westlands Solar Park, One of the Largest Permitted Solar Parks ...**

? The first phase of CIM's development at Westlands Solar Park includes Aquamarine, a 250-megawatt solar photovoltaic project, which has obtained all entitlement and conditional use ...

[WhatsApp](#)

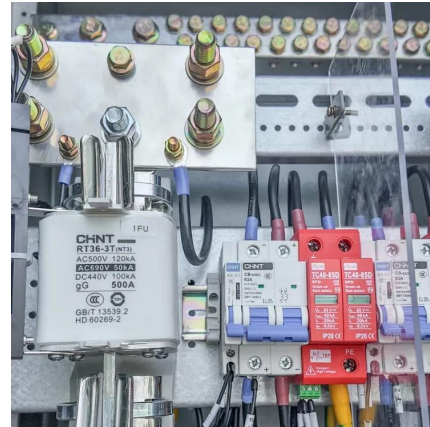
### [Solar Development in Agricultural Wetlands](#)

Abstract: developments in wet meadow type wetlands. Surveys were conducted in designated sun (between panel rows), shade (under panel), and reference (agricultural w tlands with no ...





[WhatsApp](#)



### **Performance assessment of solar photovoltaic-based constructed wetland**

This study introduces a novel wastewater treatment process, namely solar photovoltaic power generation-constructed wetland (SPPG-CW) and conducts a ...

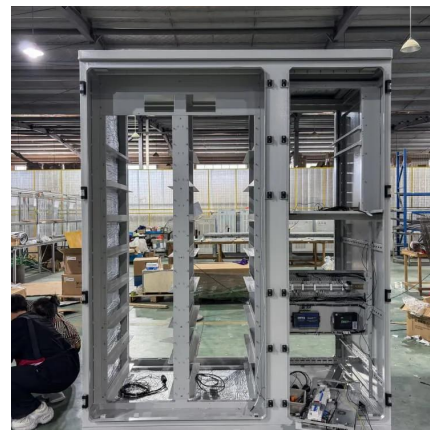
[WhatsApp](#)



### **The impact of floating photovoltaic power plants on lake water**

Floating photovoltaics (FPV) refers to photovoltaic power plants anchored on water bodies with modules mounted on floats. FPV represents a relatively new technology in ...

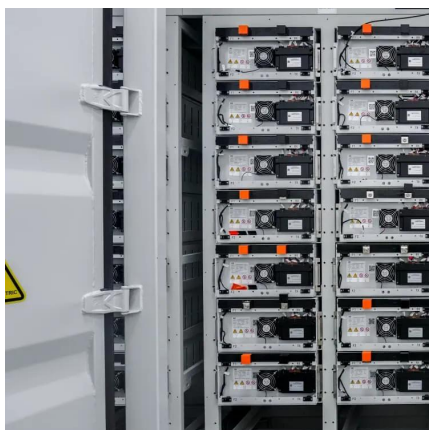
[WhatsApp](#)



### **Design of a 100 MW solar power plant on wetland in Bangladesh**

To generate 100 MW electricity (power), around 303 acres (approximately 123 hectares) of the wetland is required keeping the distance of 2.35 m between every two ...

[WhatsApp](#)





## Solar Energy Interactions with Wildlife and Their Habitats

Both the Solar Energy Interactions with Wildlife and their Habitats and the literature cited are updated regularly to account for the latest published findings in the field of solar energy and ...

[WhatsApp](#)



## Floating solar positively affects aquatic environments, says ...

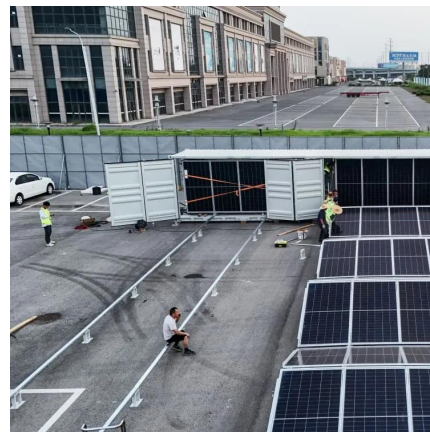
At the same Bomhofsplas floating solar park, the water quality did not change after the installation of the solar panels. the University of Groningen measured water quality for ...

[WhatsApp](#)

## Solar parks can enhance bird diversity in agricultural landscape

Solar photovoltaic power parks are a relatively new anthropogenic habitat that will become more widespread in the future. The greatest potential for solar photovoltaic power ...

[WhatsApp](#)



## BWSR guidance makes solar projects more wetland-friendly

By integrating the WCA regulatory program with the Habitat Friendly Solar Program, solar energy projects could simultaneously meet renewable energy goals and wetland regulatory ...

[WhatsApp](#)



### General Use Template (Blue Header)

Solar projects differ from many other projects in that they typically involve the installation of extensive solar panel arrays on posts/pilings. For linear projects (bridges, elevated walkways, ...

[WhatsApp](#)



### Kushiro wetlands megasolar issue

2 days ago· Kushiro wetland in 2007 Since 2012, several megasolar facilities-- solar farms with a minimum power output of 1 megawatt of electricity--have been constructed in the area around ...

[WhatsApp](#)

### The Impact of Solar Development on Wetlands: Literature ...

We include a summary of the wetland and/or solar and wetland policies from 13 jurisdictions. Overall, those with policies to protect wetlands in North America are taking similar approaches ...

[WhatsApp](#)





## Contact Us

---

For catalog requests, pricing, or partnerships, please visit:  
<https://www.straighta.co.za>