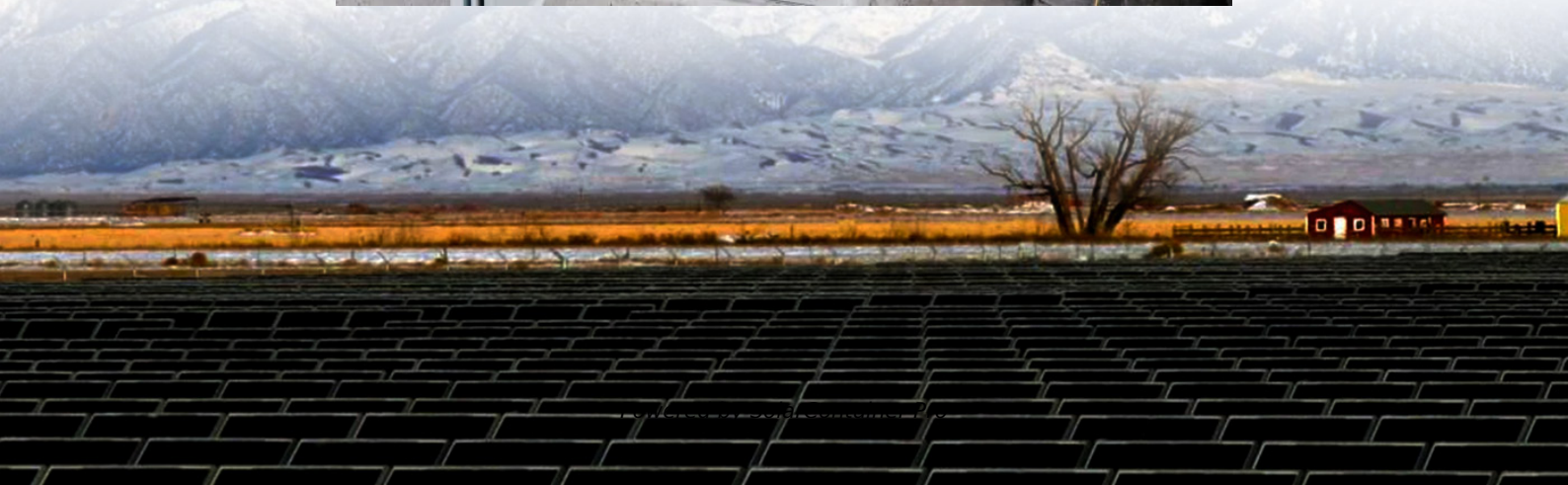


Photovoltaic panels generate more electricity in summer than in autumn





Overview

Hotter does not mean more electricity generation. This is why the best time of the year for solar panels to work best is not summer but spring. This fact is known as the power temperature coefficient. It is listed on the solar panel datasheet as a percentage of power output loss per degree Celsius ($\%/^{\circ}\text{C}$). For.

After learning what time of day do solar panels work best, let's find out in detail about solar panel output winter vs summer. No, this is not the case. Solar panels will produce electricity even in winter but there will be an average 50% reduction. According.

One thing that influences the solar output received from your solar panels is their temperature coefficient. It is always listed as a negative number on the datasheet of a solar panel. The.

Is solar panel output winter vs Summer?

Now, let's start exploring solar panel output winter vs summer. Solar production is not the same year-round. Seasonal changes affect the intensity of sunlight, which in turn leads to differentiated output by the solar power system.

Do solar panels produce more energy during summer?

A common misconception about solar panels is that they produce more energy during hot summer days. However, it is not true. Even, the efficiency of solar panels gets reduced by 30% due to extreme heat. The perfect conditions for higher solar panels efficiency is cold weather. And the perfect temperature ranges from 15°C to 35°C .

Does solar PV produce electricity in the summer?

So solar PV may not produce the kind of electricity you get in the summer, but it is still producing some energy. Let's now compare this to solar thermal. Solar thermal heats water using the heat of the sun, so you would expect it to produce far less usable heat in the winter. And again this is the case.



When do solar panels produce the most energy?

With an increase in intensity, solar panels tend to produce most energy between late morning hours to peak afternoon hours, that is 11:00 am to 04:00 pm. This decreases as evening approaches, and it falls to 0 at night. This should have helped you understand solar panel output vs time of day. What is Solar Panel Output Winter Vs Summer?

.

What power can a solar panel generate in summer & winter?

The table below gives you an idea of what power a solar panel can generate in summer and winter. For reference, to keep your caravan and motorhome battery topped up while on-site, you would need at least a 40W panel to achieve this. Running additional electrical devices, such as microwaves and laptops, will add further strain.

Do solar panels work in winter?

It relates to the season. Summer means abundant sunshine and power generation. Days are usually long during summer, which means there are more daylight hours, and your solar panels receive more power. This power is stored and used for days to come. However, this is not the case in winter.



Photovoltaic panels generate more electricity in summer than in autumn



Photovoltaic panels generate more electricity in summer than in autumn

On average, photovoltaic solar panels still produce up to 80 percent more energy during the summer months than in winter. The main reasons are (as you may have guessed) shorter ...

[WhatsApp](#)

Photovoltaic panels generate more electricity in summer than in ...

On average, photovoltaic solar panels still produce up to 80 percent more energy during the summer months than in winter. The main reasons are (as you may have guessed) shorter ...

[WhatsApp](#)



Is Seasonality Influencing Solar Panel Production? , Power Home

The extended daylight hours in summer favor prolonged efficient operation of solar panels, thereby increasing the total power generation. Although summer provides intense ...

[WhatsApp](#)

[Do Solar Panels Produce More in Summer Than Winter](#)

Solar panels produce 50% less energy in winter compared to summer. This happens because there's less sunlight during winter. Even though



panels still work in winter, they generate more ...

[WhatsApp](#)



How much solar energy is used in spring, summer, autumn and ...

As the year transitions into autumn, solar energy production undergoes a noticeable decline. Sunlight availability decreases due to shorter days and changing weather ...

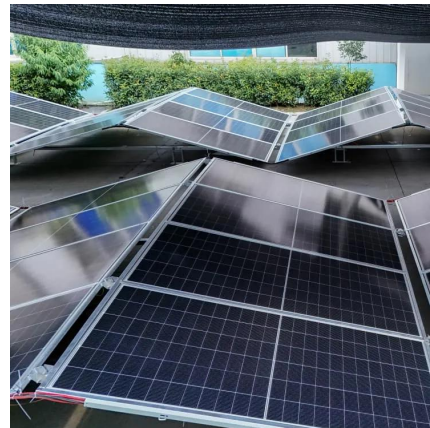
[WhatsApp](#)



Solar panel output in the summer vs the winter , Good Energy

It won't come as a surprise that solar panels generate most of their electricity in the summer months. Longer days and fairer weather bring more 'sunshine hours' - a measure that ...

[WhatsApp](#)



Optimal Solar Production: Understanding Seasonal Variations

Solar panels produce more electricity in the summer, but their efficiency is often better during the winter. Solar panel efficiency measures how much electricity a panel can ...

[WhatsApp](#)





Do Solar Panels Need Direct Sunlight? The Truth About Solar Panel

Fortunately, most modern solar panels are designed to work well in low-light conditions and will still generate adequate electricity on overcast days. As a rule of thumb, a ...

[WhatsApp](#)



How Much Energy Does A Solar Panel Produce?

Solar panels are quietly transforming rooftops around the world, turning sunlight into electricity and helping homeowners slash utility bills. If you're thinking about going solar, ...

[WhatsApp](#)

Solar Panel Output Winter vs. Summer

Winter months generally result in lower solar panel output due to reduced sunlight intensity, shorter days, and potential cloud cover. Summer months offer increased sunlight intensity, ...

[WhatsApp](#)



Does Seasonal Changes Affect the Efficiency of Solar Panel?

During summer months, days are longer, and the sun is positioned higher in the sky, resulting in more direct sunlight hitting the panels. In winter, days are shorter, and the sun sits ...

[WhatsApp](#)



Contact Us

For catalog requests, pricing, or partnerships, please visit:
<https://www.straighta.co.za>