

Photovoltaic panel roof installation standards





Overview

NFPA 1 provides guidance on how solar photovoltaic panels must be installed on the roofs of homes. What are building codes for solar panel installation?

Building codes for solar panel installation are crucial for ensuring the safety, efficiency, and longevity of solar energy systems. These codes, which encompass structural, electrical, fire safety, and zoning regulations, provide a comprehensive framework for the proper design, installation, and maintenance of solar photovoltaic (PV) systems.

Does a roof support solar photovoltaic panels or modules?

The structure of a roof that supports solar photovoltaic panels or modules shall be designed to accommodate the full solar photovoltaic panels or modules and ballast dead load, including concentrated loads from support frames in combination with the loads from Section CS507.1.1.1 (IBC 1607.13.5.1) and other applicable loads.

Should PV panels be placed on residential roofs?

Paths for fire and rescue. Placing PV panels on residential roofs is a balancing act between getting the most possible wattage and creating safe pathways for first responders who may have to climb the roof in an emergency.

Can photovoltaic panels be installed on a building roof?

The installation of photovoltaic panels on a building roof or integral with a building roof also raises other code issues (e.g., roof loading, wind loading, fire ratings, weather tightness, mounting systems, roof penetrations, etc.), which may also be relevant for systems mounted on or integral to a wall.

What are the NFPA requirements for solar PV systems?

The electrical portion of solar PV systems shall be installed in accordance with NFPA 70. CS512.2 (IFC 1204.2) Access and pathways. Roof access, pathways, and spacing requirements shall be provided in accordance with Sections



CS512.2.1 (IFC 1204.2.1) through CS512.3.3 (IFC 1204.3.3).

How much weight do solar panels add to a roof?

Before mounting solar panels, your roof must undergo a thorough structural assessment. Solar panels and mounting equipment add approximately 3-4 pounds per square foot of additional load to your roof structure. Key evaluation factors include:



Photovoltaic panel roof installation standards



CHAPTER 5 CS PHOTOVOLTAIC SYSTEMS

Class A, B and C roof assemblies and roof coverings required to be listed by this section shall be tested in accordance with ASTM E108 or UL 790. In addition, fire-retardant-treated wood roof ...

[WhatsApp](#)

[Standards and Requirements for Solar Equipment, ...](#)

Installation on of rooftop solar PV systems raises issues related to building, fire, and electrical codes. Because rooftop solar is a relatively new technology and often added to a building after ...

[WhatsApp](#)



Guidelines on Rooftop Solar PV Installation for Solar Service ...

Preface This document provides a general guideline and best practices guide for the installation of rooftop solar PV systems in Sri Lanka. The guide was prepared based on the applicable ...

[WhatsApp](#)

DS 1-15 Roof Mounted Solar Photovoltaic Panels (Data Sheet)

2.1.1.1 Design all roof-mounted, rigid PV solar panels and their securement using basic wind pressures in accordance with DS 1-28, Wind



Design. Adhere to the following ...

[WhatsApp](#)



Guide to installation of renewable energy systems on roofs of

This publication provides practical guidance on the installation of roof-mounted renewable energy systems and complements existing guidance contained in other sources including the NHBC ...

[WhatsApp](#)



Rooftop Solar Installations: OSHA's Fall Safety Requirements

OSHA Fall Protection for Solar Installation Solar panel installations are growing in popularity for commercial buildings. Whether you want to increase energy efficiency, decrease your carbon ...

[WhatsApp](#)



Installation of Photovoltaic Systems

The intent of this brief is to provide code-related information about photovoltaic systems to help ensure that what is proposed regarding the photovoltaic 'product' itself, including accessories ...

[WhatsApp](#)





[Solar Photovoltaic: SPECIFICATION, CHECKLIST AND GUIDE](#)

Builders that intend to meet both the solar PV and solar water heating RERH specifications should detail the location and the square footage of the roof area to accommodate both technologies.

[WhatsApp](#)



Solar Panel Installation Regulations UK: Everything You Need to ...

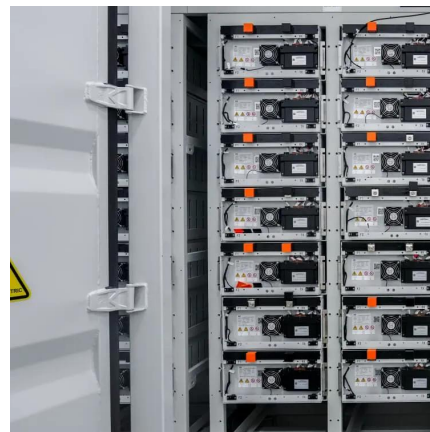
Solar panel installation regulations in the UK can be complex. While it's your installer's job to ensure everything is up to scratch, you may want to be kept in the loop about ...

[WhatsApp](#)

Circular: Safety Requirements for Installation of Photovoltaic ...

2. As the installation of PV panels (or commonly known as solar panels) gains acceptance and wide adoption by building owners, it is crucial that industry stakeholders involved in installation ...

[WhatsApp](#)



[Roof Mounted Photovoltaic Solar Panel Systems](#)

It is important to ensure the manufactured panels and installation are certificated to a recognised standard such as a minimum IEC 61215 and IEC 61730. Internationally, local equivalent ...

[WhatsApp](#)



Contact Us

For catalog requests, pricing, or partnerships, please visit:
<https://www.straighta.co.za>