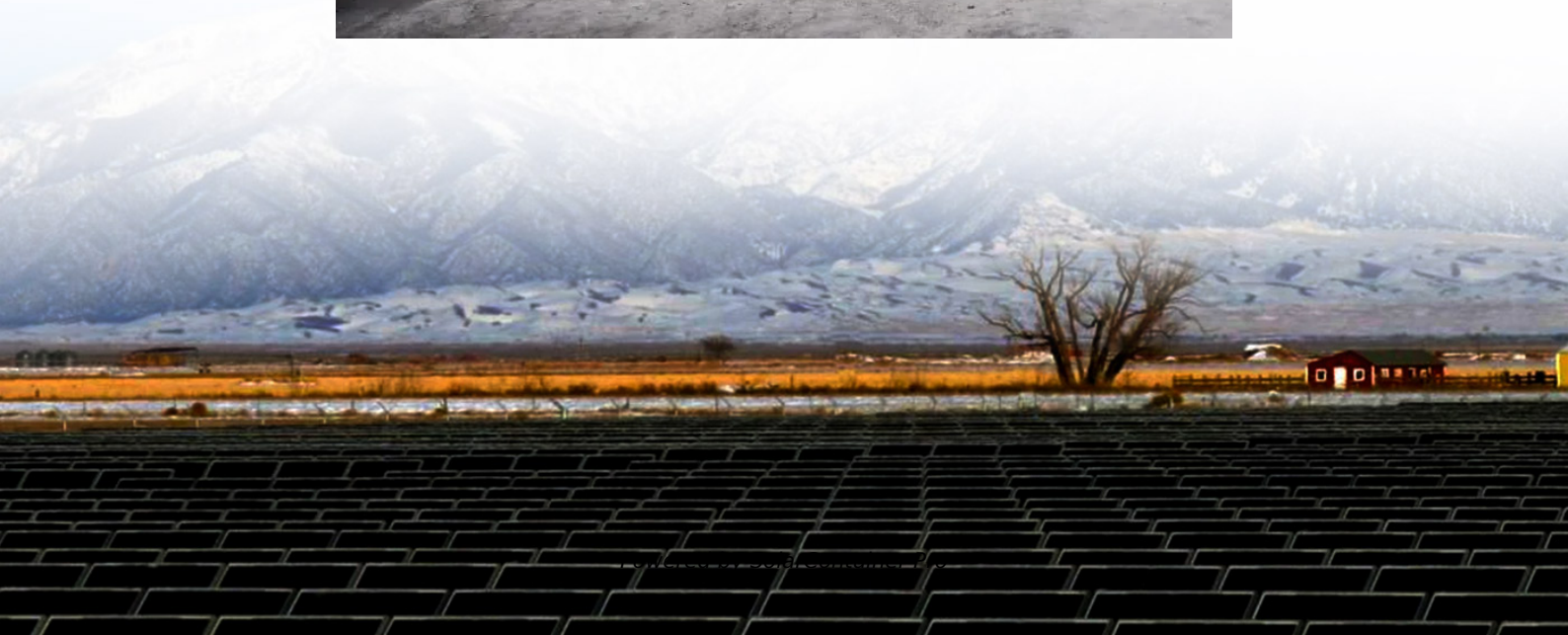


Photovoltaic panel inverter size





Overview

This guide breaks down what size solar inverter you actually need—so your setup runs smooth, efficient, and stress-free from day one. What Size Solar Inverter Do I Need?

A solar inverter should closely match your solar system's output in kW—typically within 80% to 120% of your total panel capacity.



Photovoltaic panel inverter size



[Solar inverter sizing: Choose the right size inverter](#)

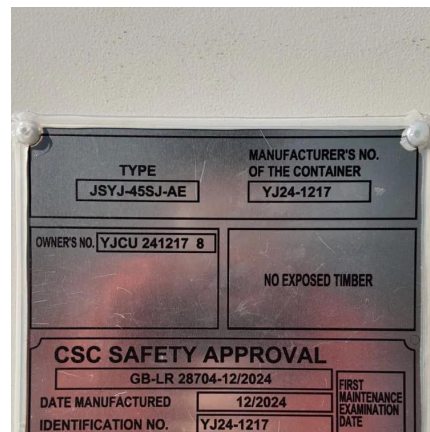
When designing a solar installation, and selecting the inverter, we must consider how much DC power will be produced by the solar array and how much AC power the inverter is able to ...

[WhatsApp](#)

What Size Solar Inverter Do You Need for Solar Panels? Explained

How Solar Inverter Sizing Works The size of the solar inverter you need is directly related to the output of your solar panel array. The inverter's capacity should ideally match the ...

[WhatsApp](#)



Inverter Size Calculator [Power Inverter, AC, DC, Solar Inverter]

Calculate the ideal inverter size with the Inverter Size Calculator. Perfect for selecting inverters for homes, solar panels, or vehicles based on power requirements.

[WhatsApp](#)

[Solar PV Inverter Sizing . Complete Guide](#)

By considering factors such as system size, energy consumption, future expansion plans, local climate, and solar irradiance levels, you can select the appropriate inverter size for ...



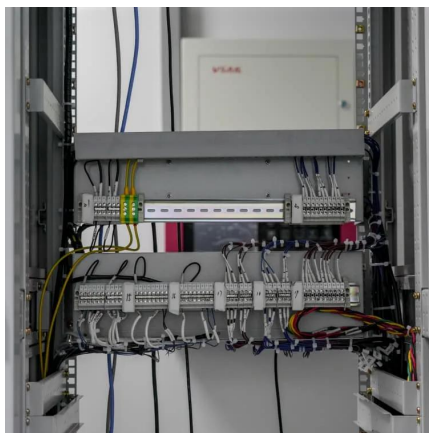
[WhatsApp](#)



Solar inverter size: Calculate the right size for your inverter

Sizing your inverter correctly ensures that no electricity is wasted and maximum efficiency is achieved. Undersized inverters waste energy and wear out faster. If your inverter is too small, ...

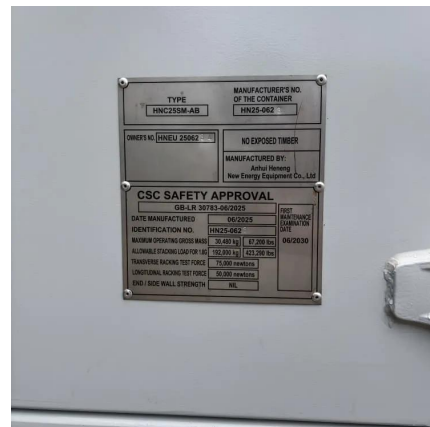
[WhatsApp](#)



How To Size an Inverter: Solar Inverter Sizing Explained

When sizing an inverter, calculate the total wattage needed and understand surge vs. continuous power. Choose the right size with a 20% safety margin. Factor in simultaneous ...

[WhatsApp](#)



Solar Inverter Sizing Guide for Maximum Efficiency , Mingch

This article explains how to calculate your inverter size, what affects it, and how to avoid costly mistakes, especially when using high-efficiency solutions like MINGCH Electrical's ...

[WhatsApp](#)





How to Choose the Right Size Solar Inverter: Step-by-Step with ...

Wondering what size solar inverter do I need for your solar system? This guide walks you through calculating inverter size based on panel capacity, power usage, and safety ...

[WhatsApp](#)



[Beginner's Guide: Sizing Your Solar System . Renogy US](#)

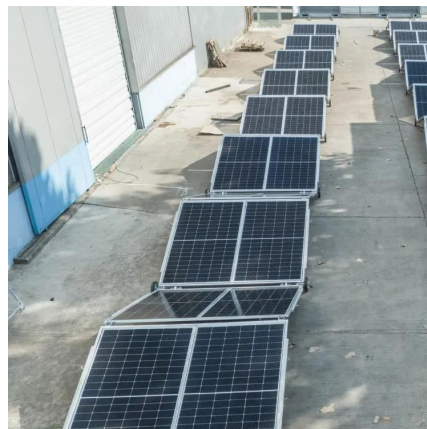
Learn how to accurately size your solar system with this comprehensive guide. Determine the panels, batteries, controller, and inverter required for your setup. Calculate load sizing, solar ...

[WhatsApp](#)

[calculate inverter size for solar + Sizing Formula](#)

Common sizes range between 1kW and upwards over 10kW. In order to accurately size your inverter, here is a very simple formula: projectiles. Inverter Size = Total Solar Panel ...

[WhatsApp](#)



Contact Us

For catalog requests, pricing, or partnerships, please visit:
<https://www.straighta.co.za>